

**Action Requested/Required:**

- ☐ Vote/Action Requested  
☐ Public Hearing  
☒ For Discussion Only  
☐ Presentation Only

**Department:** Community Development **Presenter(s) & Title:** Steve Green, Zoning Administrator

**Agenda Item Title:**

Request to amend approved Master Sign Plan for Northside Hospital Cherokee - Don Hausfeld

**Summary:**

In 2016 a Master Sign Plan was approved for Northside Hospital Cherokee. The hospital would like to amend the existing Master Sign Plan with the submitted revisions.

**Budget Implications:**

Budgeted? ☐ Yes ☐ No ☒ N/A

Total Cost of Project:  Check if Estimated ☐

Fund Source: General Fund ☐ Water & Sewer ☐ Sales Tax ☐ Other:

**Staff Recommendations:**

Staff recommendations will be presented at the action meeting.

**Reviews:**

Has this been reviewed by Management and Legal Counsel, if required? ☐ Yes ☐ No

**Attachments:**

Letter requesting amendments  
Approved 2016 Master Sign Plan  
Proposed 2025 Master Sign Plan



# **NORTHSIDE HOSPITAL**

---

**CHEROKEE**

August 12, 2025

Mr. Kevin Turner, Community Development Director

Mr. Steve Green, Zoning Administrator

City of Canton Georgia

110 Academy Street

Canton, Georgia 30114

Thank you for working with me on the revisions necessary for the development of the hospital campus. As you advised, please see the bullets points below detailing the modifications to the original "Canton Place Master Sign Plan" submitted on August 18, 2016, presented to City Council on September 1, 2016, with "Phase One-ONLY" approved on September 15, 2016.

- **The approved 'Phase One-ONLY' Master Sign Plan included:**
  - 28 signs depicted in red on page 0.1 labeled 1-28
    - All 28 signs are in support of the main entrance, the hospital and the first two medical office buildings.
    - All 28 signs have been installed.
  - 14 signs depicted in blue on page 0.1 labeled F1 – F14
    - All 14 signs are in support of the new parking deck now constructed, the new medical office building currently in permit review, the surface parking to support the new medical office building and future parking decks and medical office buildings.
    - None of the 14 signs have been constructed.
- **Revision to the "Phase One-ONLY" approved Master Sign Plan:**
  - Needing flexibility with the placement and size of each future sign the following note has been added to the Master Signage Plan found on page 0.1 (Amended):
    - \*The Specific Location & Type of Future Hospital Signs Shall Be Determined at A Later Date Based on Future Building Locations, Building Architecture, Wayfinding Requirements & Life Safety Considerations. Design (Appearance,



# NORTHSIDE HOSPITAL

CHEROKEE

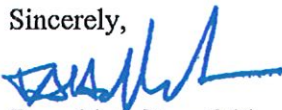
Colors, Materials, General Sizing) Of Future Hospital Signage Shall Be Consistent with Existing Internal Campus Signage Design Standards. Monument Signage shall have a maximum height of 12'-0" from grade with a maximum sign area of 150sf. As previously approved, building wall signage / building address signage sizing will vary by building structure based on architectural design and context.

- **Addition to the "Phase One-ONLY" approved Master Sign Plan:**

- A second entrance to the hospital campus was anticipated in the original August 18, 2016, submitted master plan, **HOWEVER**, the function and the use of that roadway has changed.
  - That roadway is now for employees, service vehicles, emergency access and other service-related activities carrying over 1,500 cars per day. The purpose of the roadway has been presented to City Council which approved funding 1/3 of its cost as a system improvement to Northside-Cherokee Blvd. to alleviate the back-up and burden to the main hospitals access during shift change.
- The addition detailed on page 0.1 (Amended) depicted in a clouded graphic, is to ensure that no patients or those visiting patients will enter through this access point.
- Four signs are shown on page 0.1 (Amended) labeled R1 – R4.
- The actual design and size of these signs are shown on pages R1-R2a, R1-R2b, R1-R2c, R3-R4a.

We respectfully request the approval of our revisions to the Canton Place Master Sign Plan dated 8-4-25. The revisions are consistent with the size and design as originally approved by the city.

Sincerely,



*Donald A. Hausfeld*



**City Of Canton**  
**Approved Master Plan Signage**  
**September 15, 2016 without Phase Two**

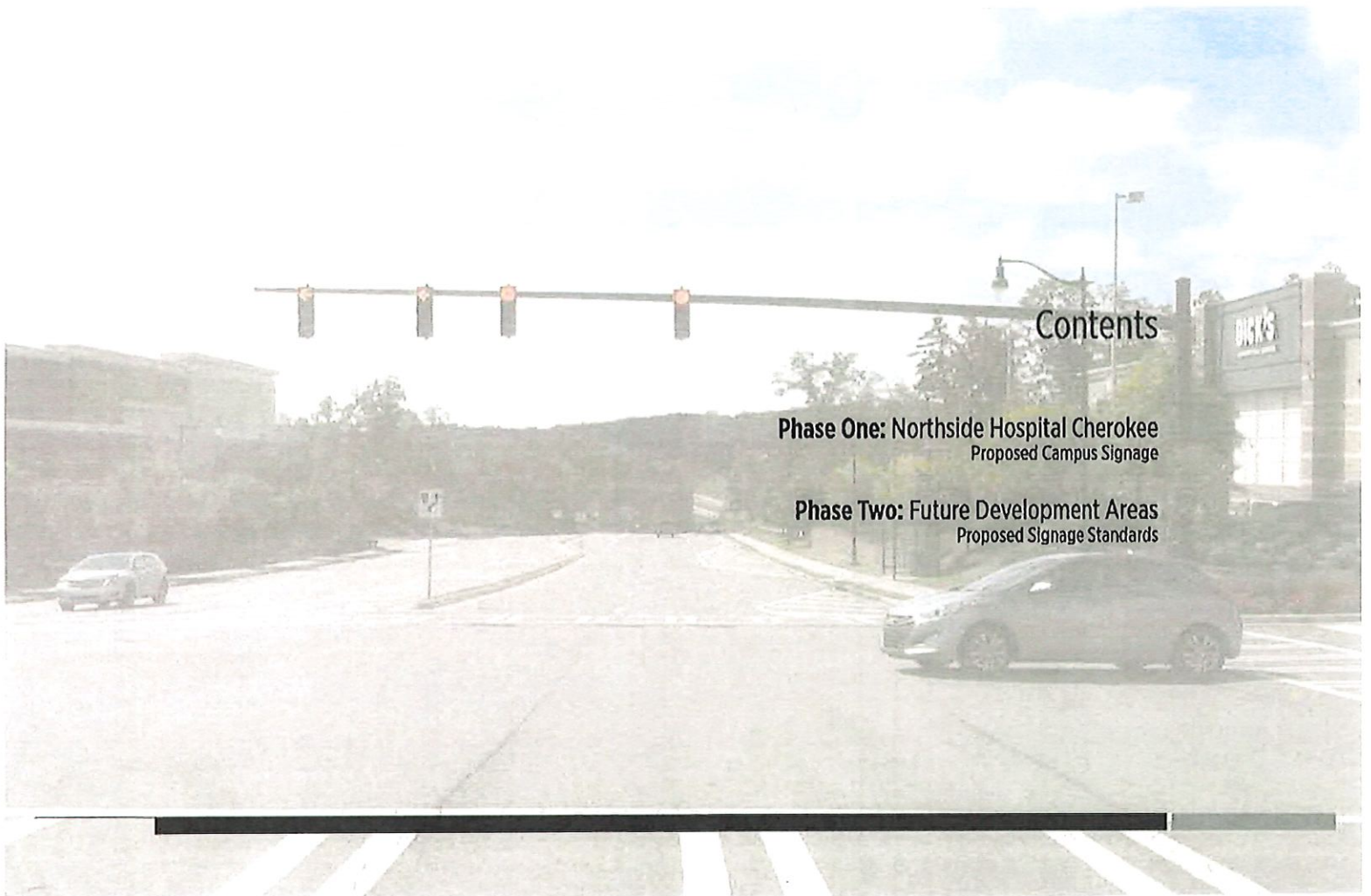




# Canton Place Master Sign Plan

Issued For City of Canton Review | 18August2016



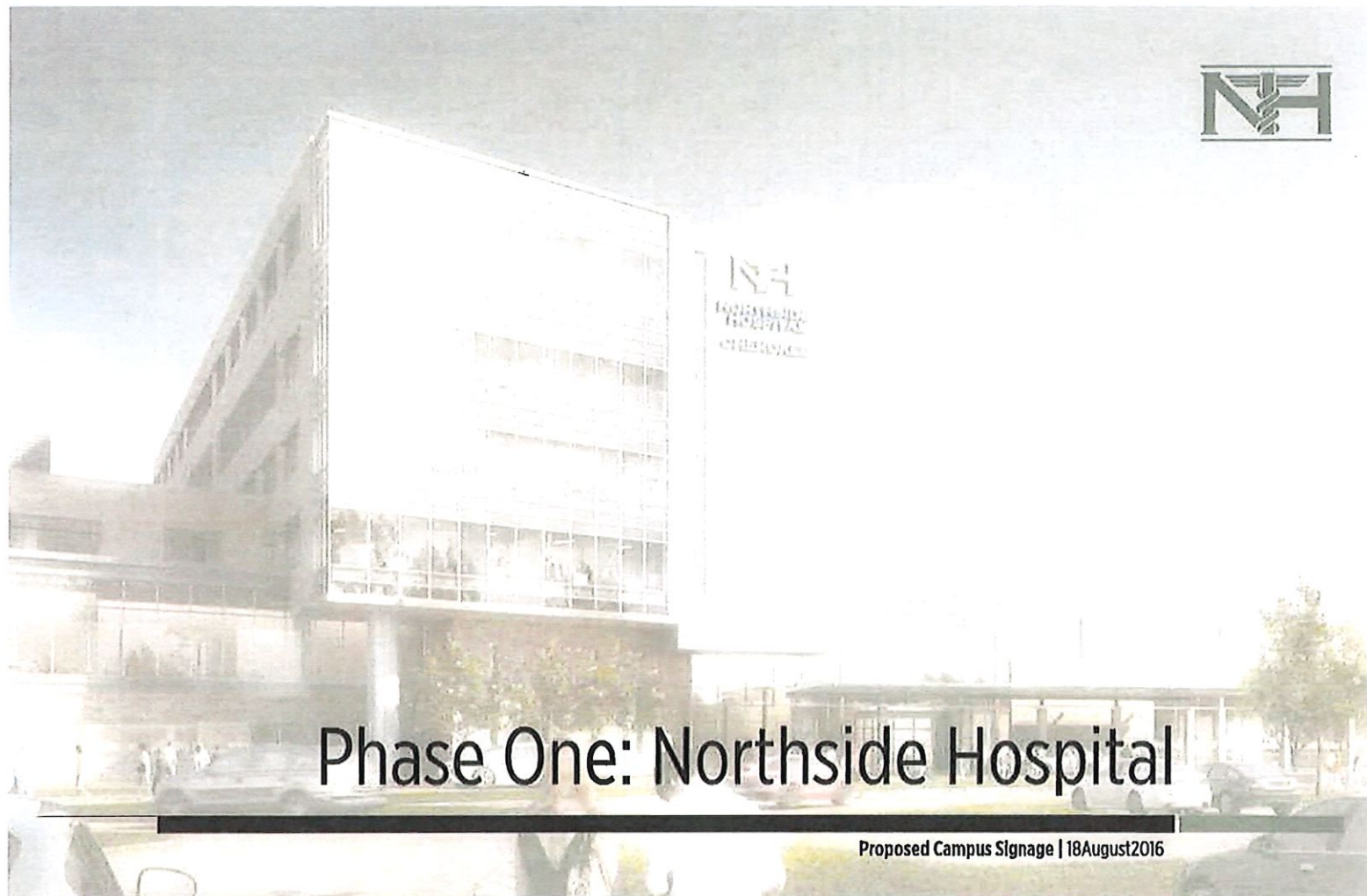


## Contents

**Phase One:** Northside Hospital Cherokee  
Proposed Campus Signage

**Phase Two:** Future Development Areas  
Proposed Signage Standards





# Phase One: Northside Hospital

Proposed Campus Signage | 18 August 2016





**NH**  
NORTHSIDE HOSPITAL  
CHEROKEE

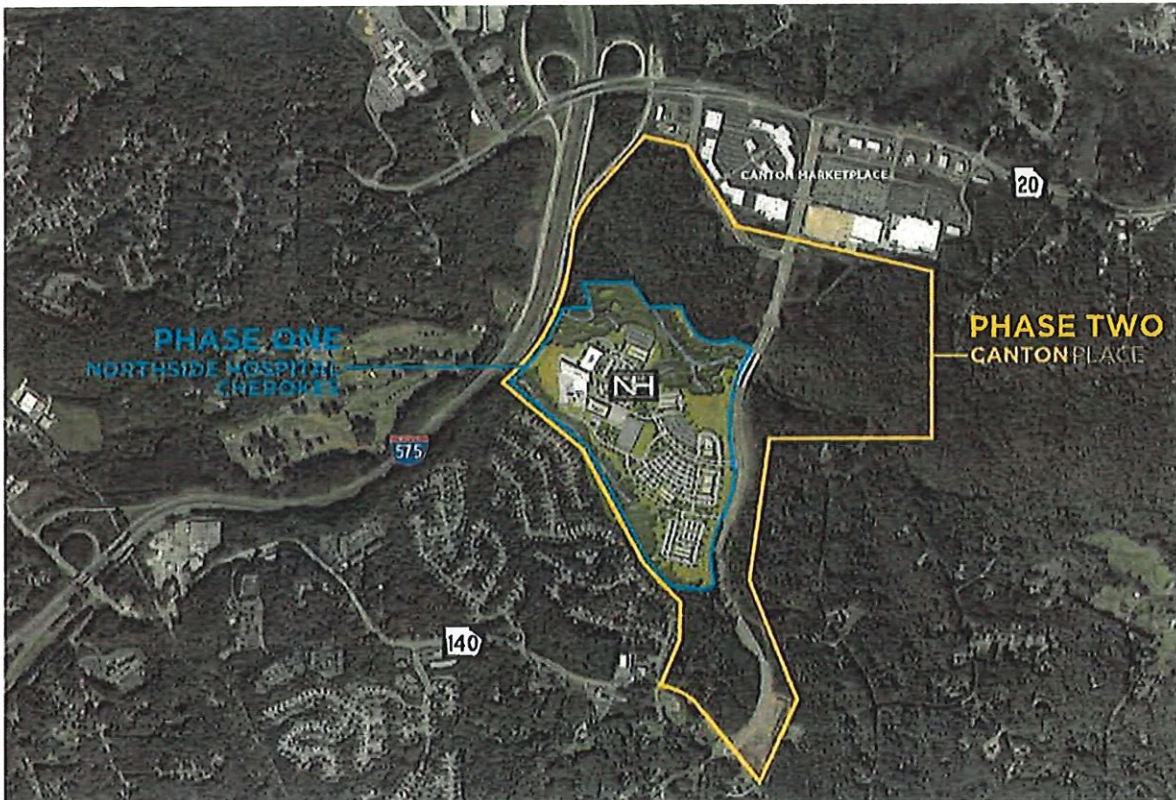
Site Graphics & Signage

12 Aug 2016	Issued For Review
18 Aug 2016	Issued To City of Canton

**CARUSODRIVE** 478.770.7465  
350 Roswell Street, Suite 200  
Marietta, Georgia 30066

Copyright 2016 by Caruso & Gray Design Group, Inc.  
All Rights Reserved. This document and the design  
illustrated here are the property of Caruso & Gray Design  
Group, Inc. It is to be used only for the specific  
project identified on the drawing. It is not to be used for  
any other project, in whole or in part.  
Consent by Caruso & Gray Design Group, Inc. is  
contingent upon Caruso & Gray Design Group, Inc.

0.0



Canton Ridge Development Overview





**NH**  
**NORTHSIDE HOSPITAL**  
**CHEROKEE**

#### Site Graphics & Signage

- Phase 1a Signs
- Phase 1b Signs  
Future Hospital Campus Signs -  
Exact Locations Subject to  
Modification Based On  
Final Building Design/ Site Plan

12-Aug-2016 Issued For Review  
16-Aug-2016 Issued To City of Canton

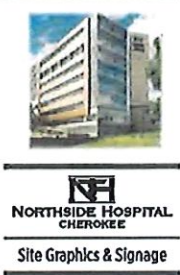
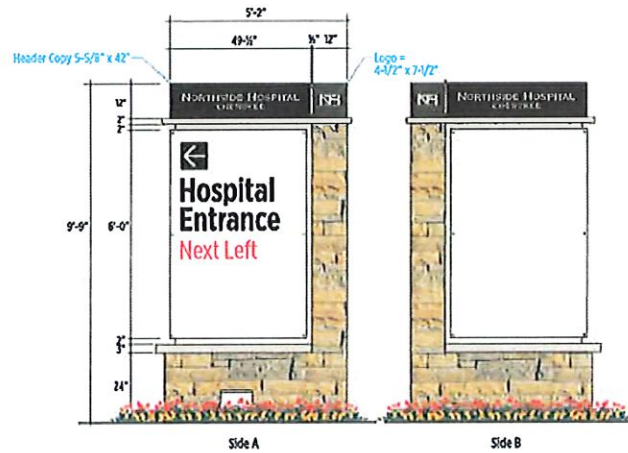
**CARUSODRYE** (770) 754-0500  
334 Russell Blvd., Suite 207B www.carusodrye.com  
Marietta, Georgia 30060

Copyright 2016 by Caruso & Drye Design Group, Inc.  
All Rights Reserved. This document is the property  
of Caruso & Drye Design Group, Inc. It is to be used only for the specific  
project identified or referred to herein and is not to  
be used for any other project. In whole or part.  
Except by express written agreement with and  
compensation to Caruso & Drye Design Group, Inc.

#### Hospital Campus Plan

0.1





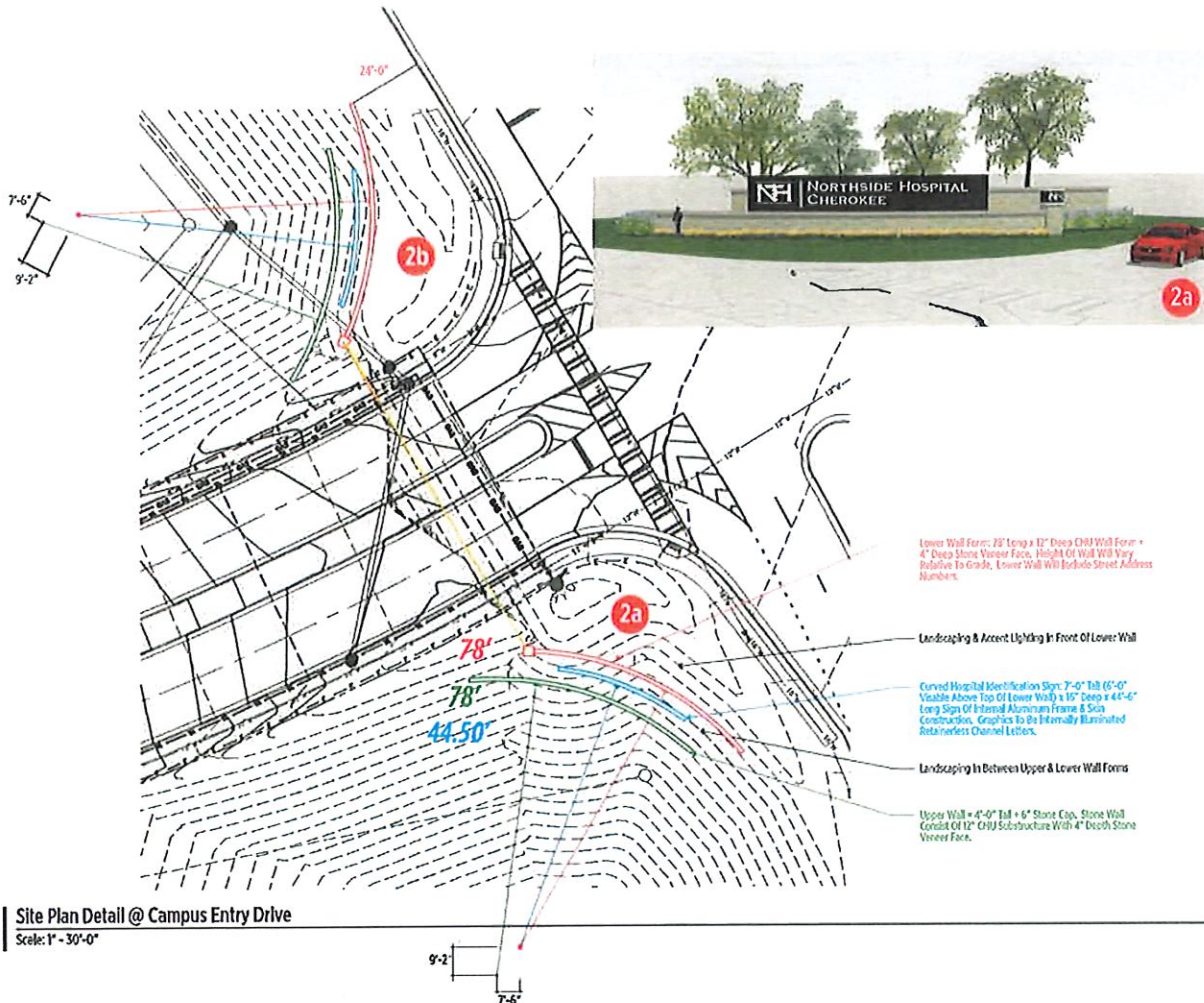
12Aug2015	Issued For Review
18Aug2016	Issued To City of Canton

CARUSODRIVE 678.772.7944  
3180 Reynolds Street, Suite 200  
Marietta, Georgia 30066

Copyright 2016 by Caruso & Drye Design Group, Inc.  
All Rights Reserved. This Document & The Designs  
Illustrated Are The Property Of Caruso & Drye Design  
Group, Inc. It Is To Be Used Only For The Specific  
Project Identified Or Referred To Herein And Is Not To  
Be Used For Any Other Project, In Whole Or Part,  
Except By Express Written Agreement With And  
Compensation To Caruso & Drye Design Group, Inc.

1 Location 1  
Directional Sign





**NH**  
NORTHSIDE HOSPITAL  
CHEROKEE  
Site Graphics & Signage

D:\Aug2016 Issued For Review  
R:\Aug2016 Issued To City of Canton

CARUSODRIVE (770) 279-4430  
114 Newell Drive, Suite 2700  
Marietta, Georgia 30060

Copyright 2016 by Caruso & Dry Design Group, Inc.  
All Rights Reserved. With Consent of the Design  
Professional For the Property of Caruso & Dry Design  
Group, Inc. It is to be used only for the Specific  
Project Identified or Referred to Herein and is Not to  
be Used For Any Other Project Without the Prior  
Consent of Caruso & Dry Design Group, Inc.

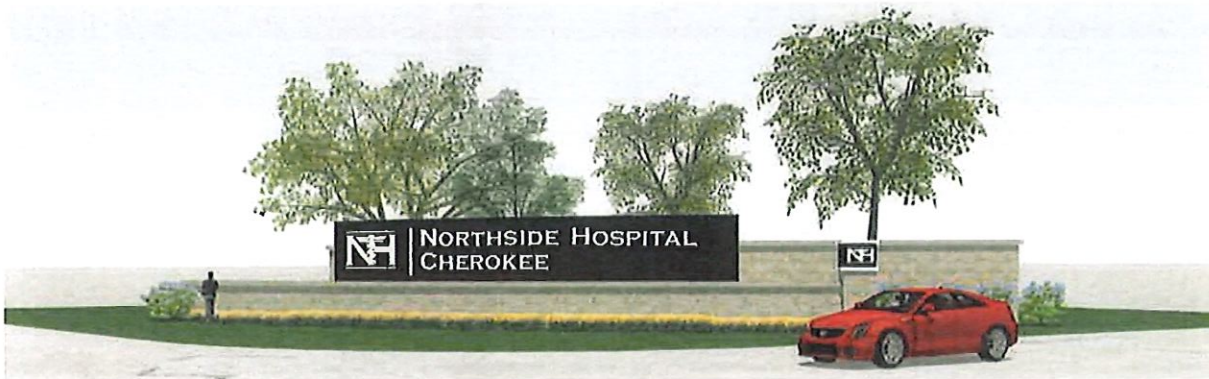
**2** Locations 2a/2b  
Campus Entrance  
Identification

2









Model Study: Sign Location 2a (Location 2b is Identical On Opposite Side Of Entry Drive)



**NH**  
**NORTHSIDE HOSPITAL**  
**CHEROKEE**

Site Graphics & Signage

12 Aug 2016 Issued For Review  
18 Aug 2016 Issued To City of Carline

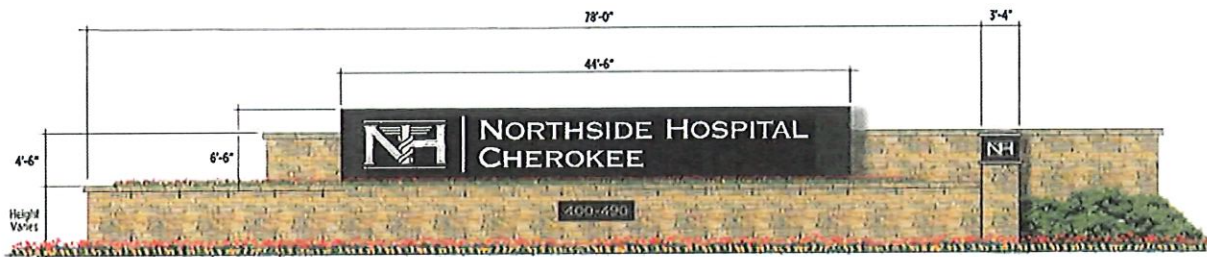
CARUSODRIVE 075 770 79 44330  
3540 Newell Street, Suite 200  
Marietta, Georgia 30066

Copyright 2016 by Caruso & Gray Design Group Inc.  
All Rights Reserved. This Document & The Designs  
Illustrated Are The Property Of Caruso & Gray Design  
Group Inc. It Is To Be Used Only For The Specific  
Project Identified Or Indicated In Written And Is Not To  
Be Used For Any Other Project In Whole Or Part.  
Except By Express Written Agreement With And  
Compensation To Caruso & Gray Design Group Inc.

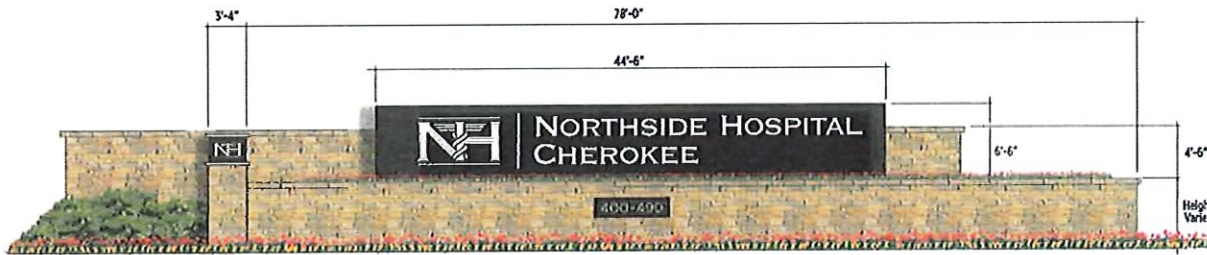
**2** Locations 2a/2b  
Campus Entrance  
Identification

2.2





**2a** | Flattened Elevation - Location 2a (South Side Of Entry Drive - Location 2b/North Side Of Entry Is Similar)  
Scale: 1/8" = 1'-0"



**2b** | Flattened Elevation - Location 2b (North Side Of Entry Drive - Location 2a/South Side Of Entry Is Similar)  
Scale: 1/8" = 1'-0"



**NH**  
**NORTHSIDE HOSPITAL**  
**CHEROKEE**  
Site Graphics & Signage

12AUG2016 Issued For Review  
18AUG2016 Issued To City of Canton

**CARUSODRYE** 677.779.4090  
101 Roswell Street, Suite 200  
Marietta, Georgia 30066

Copyright 1998 By Caruso & Drye Design Group, Inc.  
All Rights Reserved. This Document & The Designs  
Illustrated Are The Property Of Caruso & Drye Design  
Group, Inc. & It Is To Be Used Only For The Specific  
Project Identified Or Referred To Herein And Is Not To  
Be Used For Any Other Project In Whole Or Part.  
Except By Express Written Agreement With And  
Compensation To Caruso & Drye Design Group, Inc.

**2** Locations 2a/2b  
Campus Entrance  
Identification

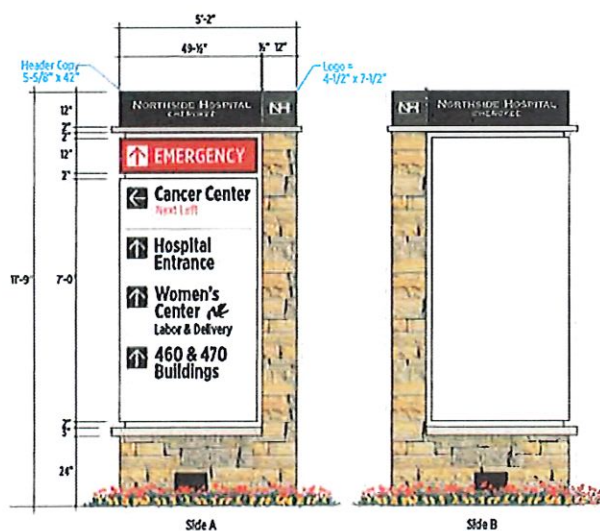
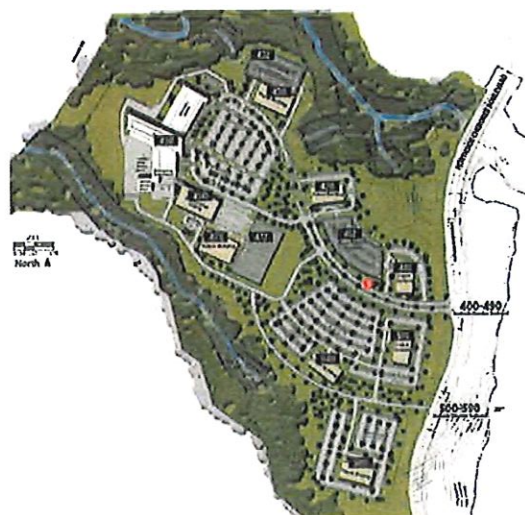
2.3





**NH**  
NORTHSIDE HOSPITAL  
CHEROKEE

Site Graphics & Signage



12 Aug 2016 Issued For Review  
18 Aug 2016 Issued To City of Canton

CARUSO DRIVE 770.774.0363  
200 Brown Street, Suite 200B www.carusodrive.com  
Marietta, Georgia 30066

Copyright 2016 by Caruso & Ryan Design Group, Inc.  
All Rights Reserved. With Document & the Design  
Illustrated for the Property of Caruso & Ryan Design  
Group, Inc. It is to be used only for the Specific  
Project Identified or Indicated in the Title and Not to  
be used for any other Project, in Whole or Part.  
Except by Express Written Agreement With and  
Consentation to Caruso & Ryan Design Group, Inc.

**3** Location 3  
Directional Sign

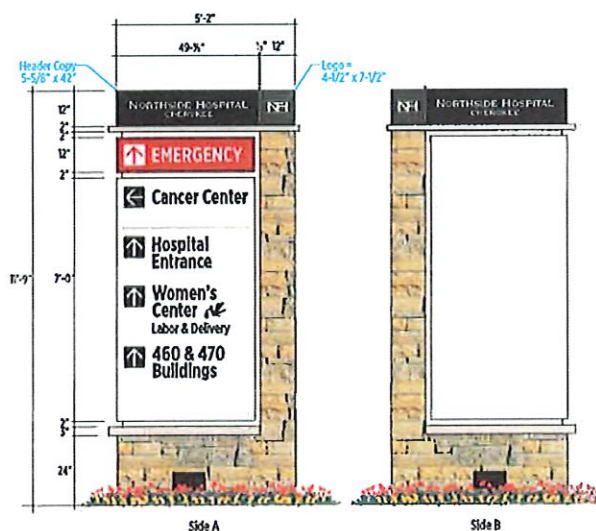
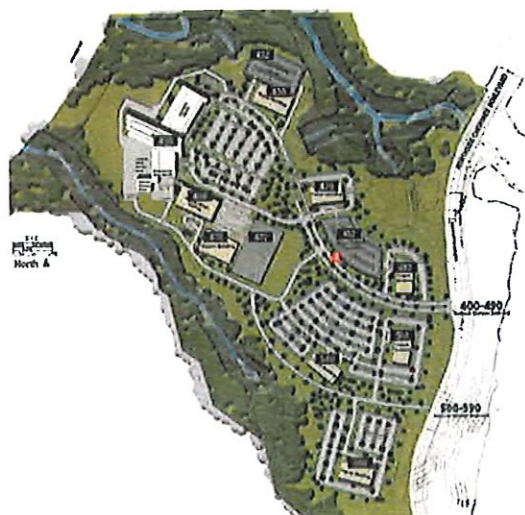
3





**NORTHSIDE HOSPITAL  
CHEROKEE**

Site Graphics & Signage



12/10/2016 Issued For Review  
10/10/2016 Issued to City of Canton

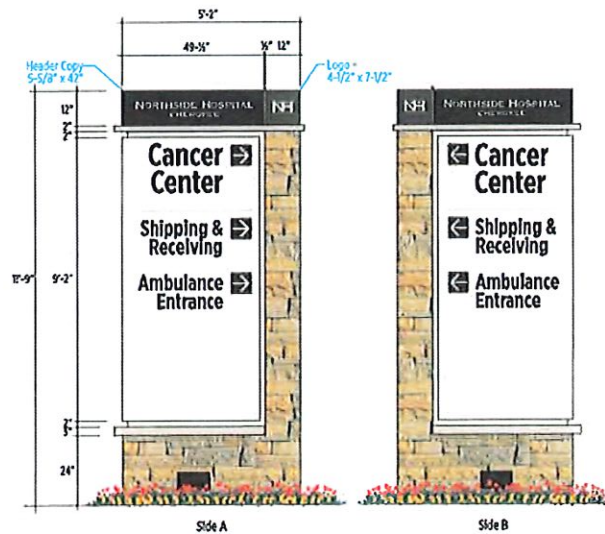
CARUSODRYE 678.779.7541  
3330 Highway 160, Suite 200  
Atlanta, Georgia 30350

Copyright 2016 by Caruso & Drye Design Group, Inc.  
All Rights Reserved. This Document & The Designs  
Illustrated Are The Property Of Caruso & Drye Design  
Group, Inc. It Is To Be Used Only For The Specific  
Project Identified Or Referred To Herein And Is Not To  
Be Used For Any Other Project In Whole Or Part.  
Except By Express Written Agreement With And  
Compensation To Caruso & Drye Design Group, Inc.

**4 Location 4  
Directional Sign**

4





**NH**  
NORTHSIDE HOSPITAL  
CHENOEKE  
Site Graphics & Signage

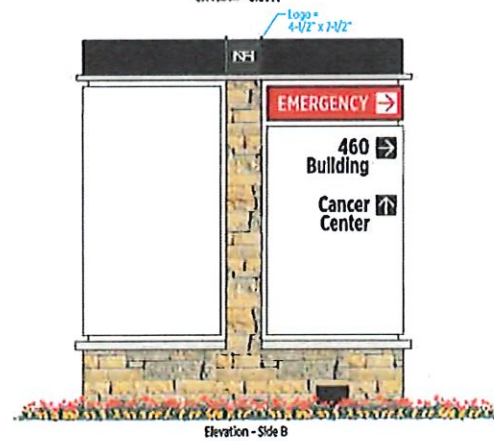
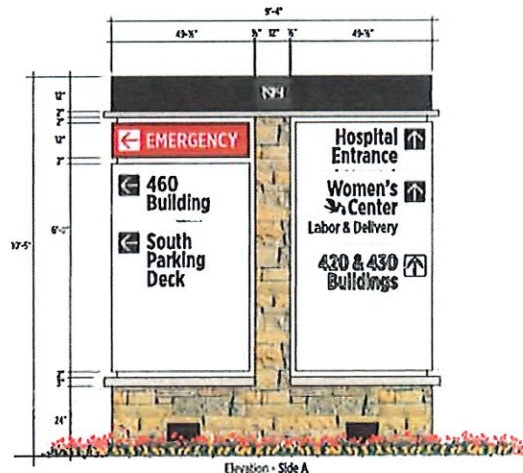
12/02/2016	Issued For Review
12/02/2016	Issued To City of Canton

CARUSODRIVE (770) 794-2500  
314 Roswell Street, Suite 2700 www.carusodrive.com  
Atlanta, Georgia 30309

Copyright 2016 by Caruso & Dry Design Group, Inc.  
All Rights Reserved. This Document & the Designs  
Illustrated are the Property of Caruso & Dry Design  
Group, Inc. It is to be used only for the Specific  
Project identified on the drawing. It is not to be  
used for any other Project without the  
Express Written Agreement with and  
Compensation to Caruso & Dry Design Group, Inc.

**5** Location 5  
Directional Sign





**NH**  
NORTHSIDE HOSPITAL  
CHEROKEE  
Site Graphics & Signage

12Aug2015 Issued For Review  
18Aug2016 Issued To City of Canton

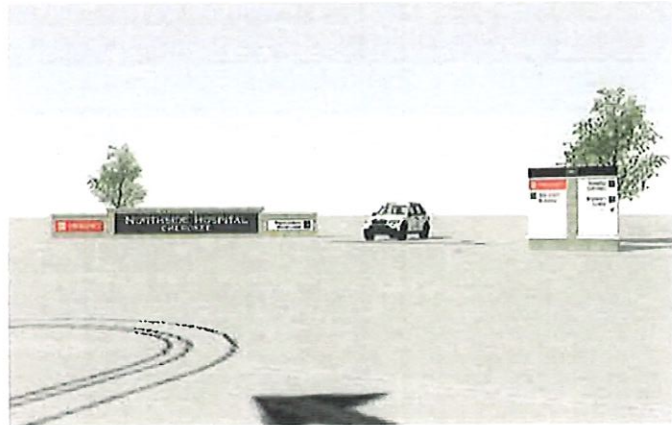
CARUSODRYE 678.292.4150  
228 Turner Blvd, Suite 200  
Marietta, Georgia 30060

Copyright 2015 by Caruso & Drye Design Group, Inc.  
All Rights Reserved. This Document & The Design  
Materials are the Property of Caruso & Drye Design  
Group, Inc. It is to be used only for the Specific  
Project Identified or Referred to Herein and is not to  
be used for any other project, in whole or part,  
except by express written agreement with and  
compensation to Caruso & Drye Design Group, Inc.

**6** Location 6  
Directional Sign

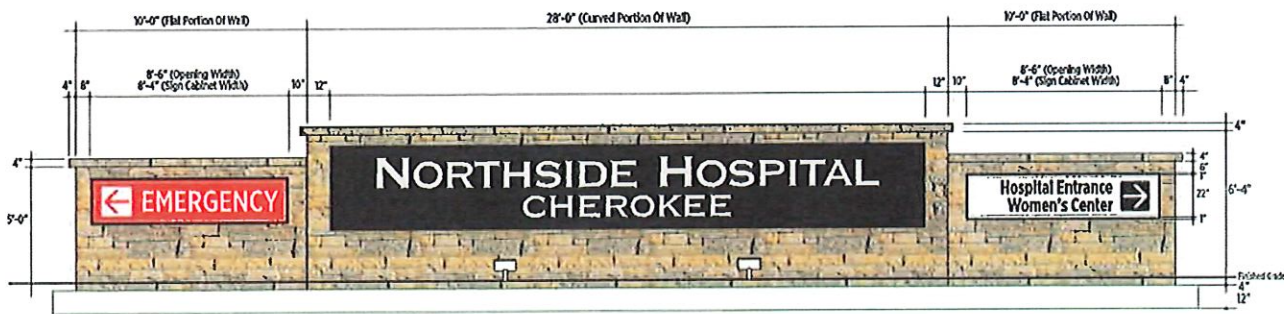
6





**NH**  
**NORTHSIDE HOSPITAL**  
**CHEROKEE**

### Site Graphics & Signage



**A** | **General Elevation**  
Scale: 1/4" = 1'-0"

12 Aug 2016	Issued For Review
13 Aug 2016	Issued To City of Canton

**CARUSODRYE** (770) 754-6360  
358 Jettison Street, Suite 7708  
Marietta, Georgia 30066  
[www.carusodrye.com](http://www.carusodrye.com)

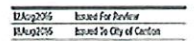
Copyright 2014 by Canus & Dye Design Group, Inc.  
All Rights Reserved. This Document & The Designs  
Illustrated Are The Property of Canus & Dye Design  
Group, Inc. It Is To Be Used Only For The Specific  
Project Identified Or Referred To Herein And Is Not To  
Be Used For Any Other Project, In Whole Or Part.  
Except By Express Written Agreement With And  
Compensation To Canus & Dye Design Group, Inc.

**7** Location 7  
Directional Sign





## Site Graphics & Signage



**CARUSODRYE** (770) 274-4360  
358 Howell Street, Suite 200B [www.carusodrye.com](http://www.carusodrye.com)  
Marietta, Georgia 30060

Copyright 2016 by Caruso & Drye Design Group, Inc.  
All Rights Reserved. This Document & the Designs  
Illustrated Are the Property Of Caruso & Drye Design  
Group, Inc. & It Is To Be Used Only For The Specific  
Project Identified or Referred To Herein And Is Not To  
Be Used For Any Other Project, In Whole Or Part.  
Except By Express Written Agreement With And  
Compensation To Caruso & Drye Design Group, Inc.

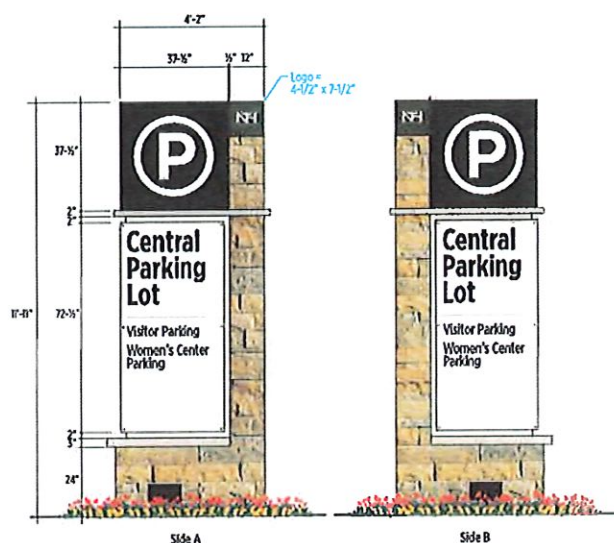
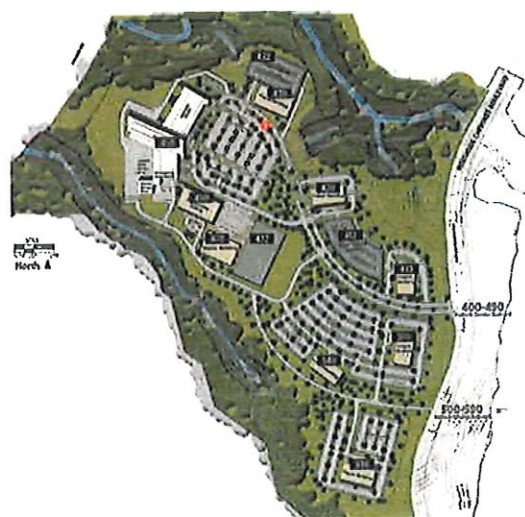
**8 Location 8 Directional Sign**





**NH**  
NORTHSIDE HOSPITAL  
CHEROKEE

Site Graphics & Signage



11/14/2015 Issued For Review  
11/14/2015 Issued To City of Canton

CARUSODRIVE 075 770-794-0100  
1500 Research Blvd., Suite 200  
Marietta, Georgia 30069

Copyright 2015 by Caruso & Dry Design Group, Inc.  
All Rights Reserved. This document is the property of Caruso & Dry Design Group, Inc. It is to be used only for the specific project identified or referred to herein and is not to be used for any other project in whole or in part. Except by express written agreement with and cooperation to Caruso & Dry Design Group, Inc.

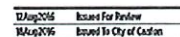
**9** Location 9  
Parking Entry  
Identifier

9





### Site Graphics & Signage



**CARUSODRYE** (7) 772-794-0360  
554 Burned Street, Suite 2008  
Marietta, Georgia 30060  
[www.carusodrye.com](http://www.carusodrye.com)

Copyright 2015 by Caruso & Drye Design Group, Inc.  
All Rights Reserved. This Document is The Design  
Illustrated Are The Property Of Caruso & Drye Design  
Group, Inc. It Is To Be Used Only For The Specific  
Project Identified Or Referred to herein And Is Not To  
Be Used For Any Other Project, In Whole Or Part,  
Except By Express Written Agreement With And  
Compensation To Caruso & Drye Design Group, Inc.

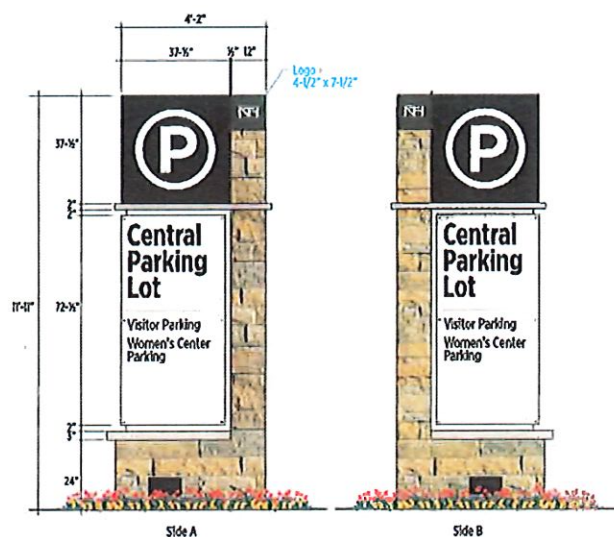
**10** **Location 10**  
**Directional Sign**





**NH**  
NORTHSIDE HOSPITAL  
CHEROKEE

Site Graphics & Signage



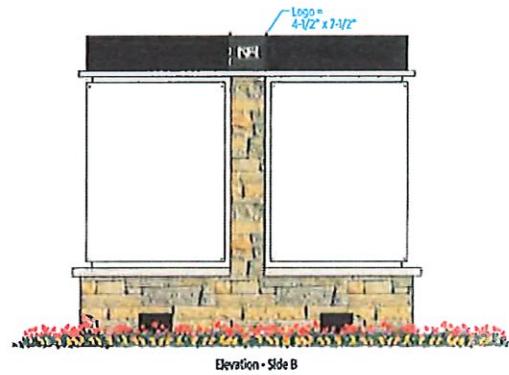
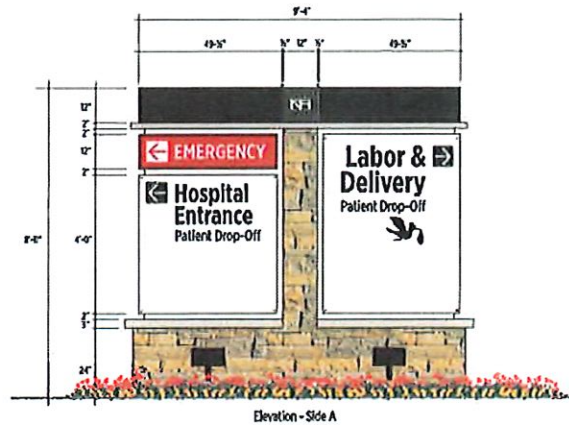
12 Aug 2016 Issued For Review  
18 Aug 2016 Issued to City of Canton

CARUSODRIVE (770) 754-6500  
318 Bennett Street, Suite 2100 www.carusodrive.com  
Atlanta, Georgia 30303

Copyright 2016 by Caruso & Drye Design Group Inc.  
All Rights Reserved. This document is the property of Caruso & Drye Design Group Inc. It is to be used only for the specific project identified on the drawing. It is not to be used for any other project without the prior written agreement with and cooperation of Caruso & Drye Design Group Inc.

**11** Location 11  
Parking Entry  
Identifier





**NORTHSIDE HOSPITAL  
CHEROKEE**  
Site Graphics & Signage

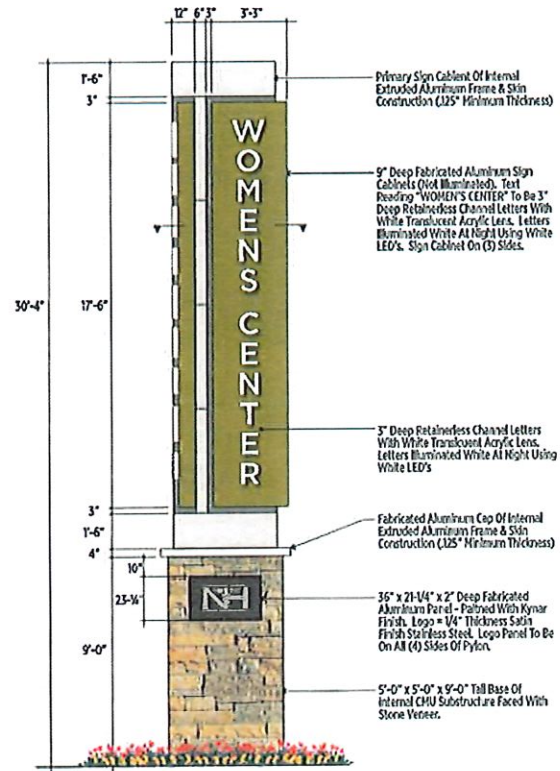
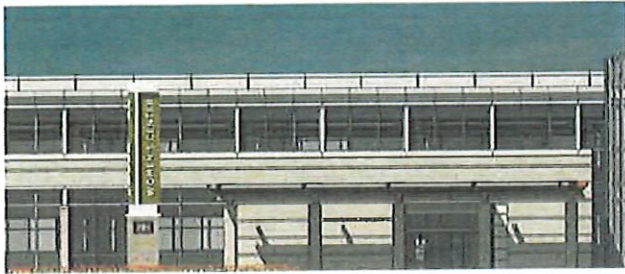
12 Aug 2016 Issued For Review  
12 Aug 2016 Issued To City of Canton

CARUSODRIVE 675 770 74 0000  
104 River Street, Suite 2000 www.carusodrive.com  
P.O. Box 1000, Georgia 30100

Copyright 2016 by Caruso & Gray Design Group, Inc.  
All Rights Reserved. This Document & The Design  
It contains are the Property of Caruso & Gray Design  
Group, Inc. It is to be Used Only For The Specific  
Project Identified or Referred To Herein And is Not To  
Be Used For Any Other Project, In Whole Or Part,  
Except By Express Written Agreement With And  
Compensation To Caruso & Gray Design Group, Inc.

**12 Location 12  
Directional Sign**





**NH**  
NORTHSIDE HOSPITAL  
CHEROKEE

Site Graphics & Signage

11 Aug 2016 Issued For Review  
14 Aug 2016 Issued To City of Canton

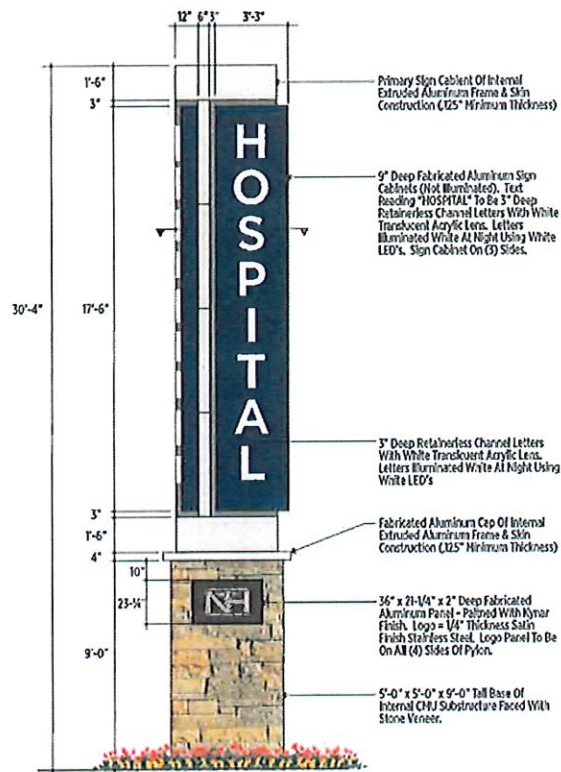
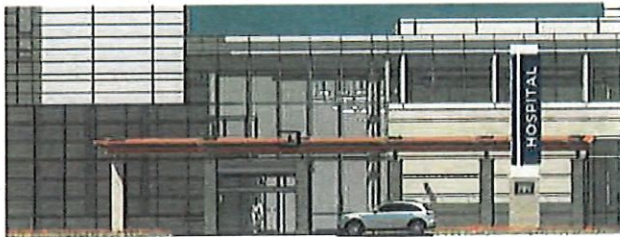
CARUSODRIVE (770) 729-4430  
300 Norwood Street, Suite 207B  
Marietta, Georgia 30067

Copyright 2014 by Caruso & Drye Design Group, Inc.  
All Rights Reserved. This Document is the Design  
Illustrated for the Property of Caruso & Drye Design  
Group, Inc. It is to be used only for the specific  
Project Identified On Document. It is Not to  
be Used For Any Other Project In Whole Or Part.  
Consent By Express Written Agreement With And  
Compensation To Caruso & Drye Design Group, Inc.

**13** Location 13  
Women's Center  
Entry Identifier

**A** Typical Elevations With Graphics Cabinet x 3 Sides  
Scale: 1/4" = 1'-0"





**A** Typical Elevations With Graphics Cabinet x 3 Sides  
Scale: 1/4" = 1'-0"



**NH**  
**NORTHSIDE HOSPITAL**  
**CHEROKEE**

Site Graphics & Signage

12 Aug 2016 Issued For Review  
16 Aug 2016 Issued To City of Canton

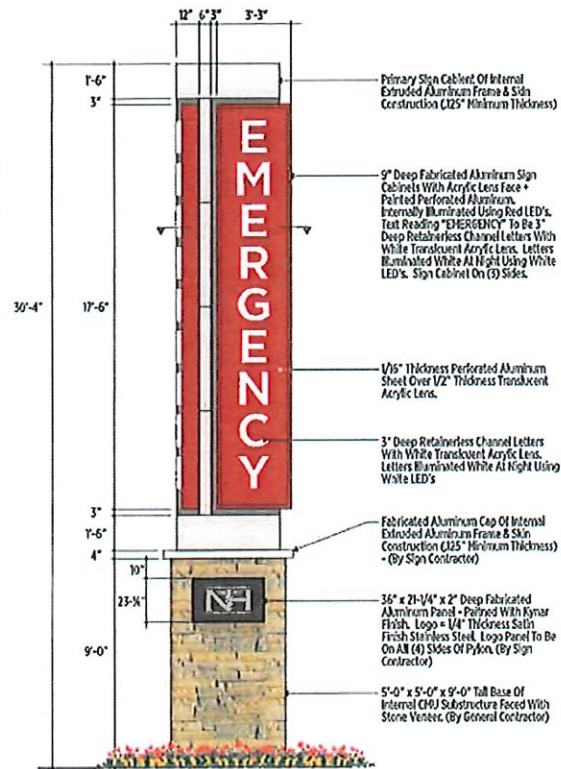
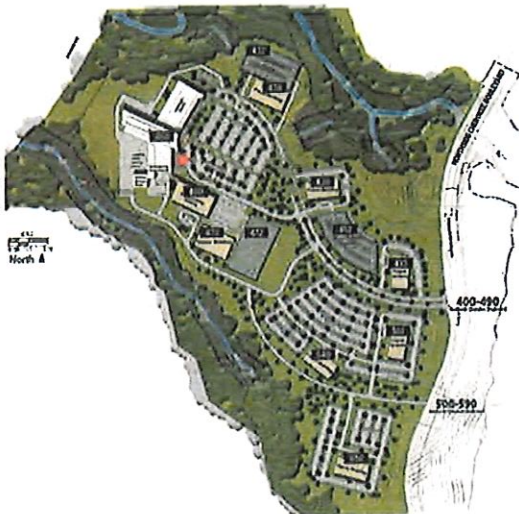
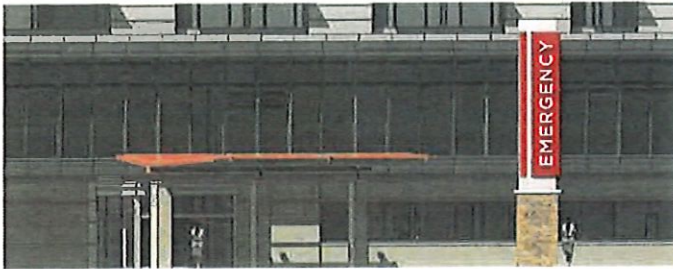
CARUSODRIVE 678.792.7643  
134 Harvard Street, Suite 200B www.carusodrive.com  
Marietta, Georgia 30060

Copyright 2014 by Caruso & Ryan Design Group, Inc.  
All Rights Reserved. This document is the property of Caruso & Ryan Design Group, Inc. It is to be used only for the specific project identified on the title page and is not to be used for any other project without the express written permission of Caruso & Ryan Design Group, Inc.

**14** Location 14  
Hospital Entry  
Identifier

14





**A** Typical Elevations With Graphics Cabinet x 3 Sides  
Scale: 1/4" = 1'-0"



**NORTHSIDE HOSPITAL  
CHEROKEE**

Site Graphics & Signage

12 Aug 2016 Issued For Review  
18 Aug 2016 Issued To City of Canton

CARUSODRIVE 477.264.1513  
304 Roswell Street, Suite 200B www.carusodrive.com  
Marietta, Georgia 30066

Copyright 2016 By Caruso & Day Design Group, Inc.  
All Rights Reserved. This Document & The Design  
Illustrated Are The Property Of Caruso & Day Design  
Group, Inc. It Is To Be Used Only For The Specific  
Project Identified Or Referenced To Herein And Is Not To  
Be Used For Any Other Project Or Work Or Part  
Except By Express Written Agreement With And  
Compensation To Caruso & Day Design Group, Inc.

**15** Location 15  
Emergency Identifier

15





**NORTH SIDE HOSPITAL  
CHEROKEE**  
Site Graphics & Signage

12 Aug 2016 Issued For Review  
18 Aug 2016 Issued To City of Canton

CARUSODRIVE 975.751.4896  
7500 Kennesaw Road, Suite 2000 Marietta, Georgia 30063

Copyright 2016 by Caruso & Dry Design Group, Inc. All Rights Reserved. This Document & The Designs Illustrated Are The Property Of Caruso & Dry Design Group, Inc. & It Is To Be Used Only For The Specific Project Identified On Herein And It Shall Not Be Used For Any Other Project, In Whole Or Part, Except By Express Written Agreement With And Compensation To Caruso & Dry Design Group, Inc.

**16** Location 16  
Hospital Identifier  
East Elevation

16





**NH**  
NORTHSIDE HOSPITAL  
CHEROKEE

Site Graphics & Signage

12-Aug-2015 Issued For Review  
18-Aug-2016 Issued To City of Canton

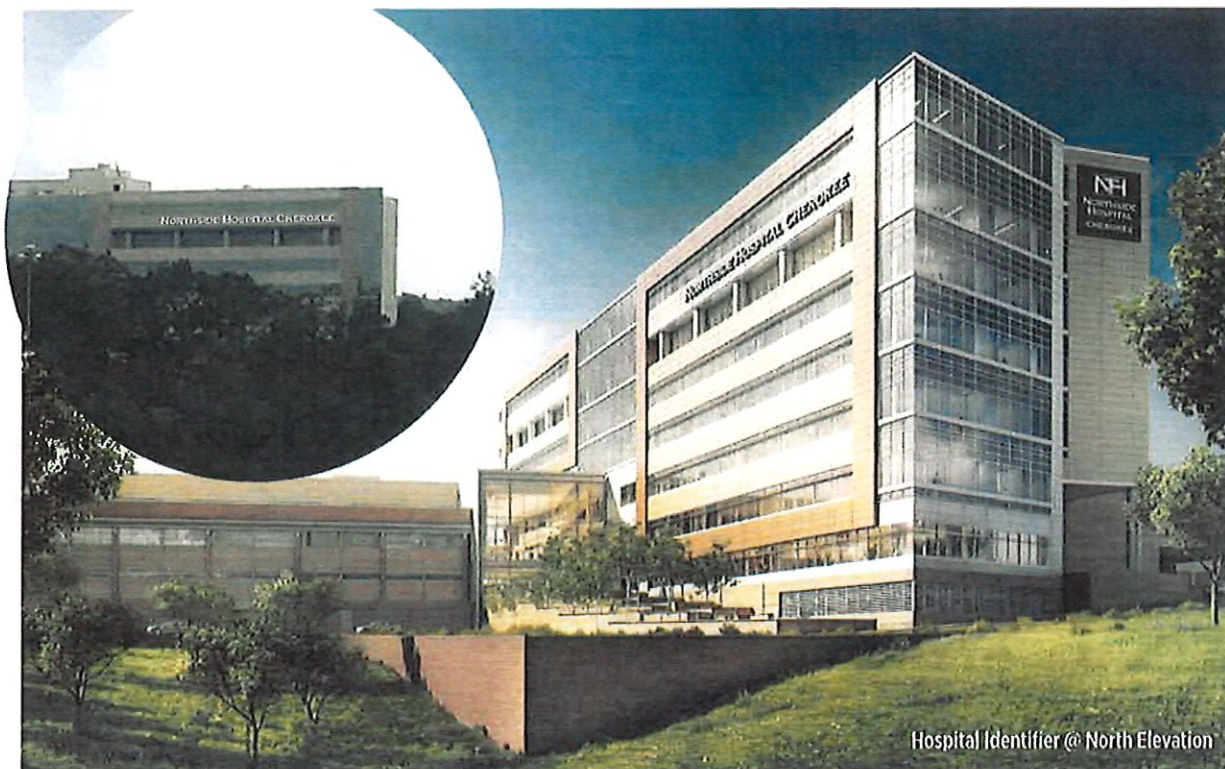
CARUSODRIVE 017902944000  
308 Roswell Street, Suite 20708 www.carusodrive.com  
Atlanta, Georgia 30309

Copyright 2016 by Caruso & Drye Design Group, Inc.  
All Rights Reserved. This Document & The Design  
Materials Are The Property Of Caruso & Drye Design  
Group, Inc. & It Is To Be Used Only For The Specific  
Project Identified Or Referred To Herein And Is Not To  
Be Used For Any Other Project, In Whole Or Part.  
Except By Express Written Agreement With And  
Compensation To Caruso & Drye Design Group, Inc.

**17** Location 17  
Hospital Identifier  
West Elevation

17





Hospital Identifier @ North Elevation



**NH**  
NORTHSIDE HOSPITAL  
CHEROKEE

Site Graphics & Signage

12Aug2016 Issued For Review  
13Aug2016 Issued To City of Canton

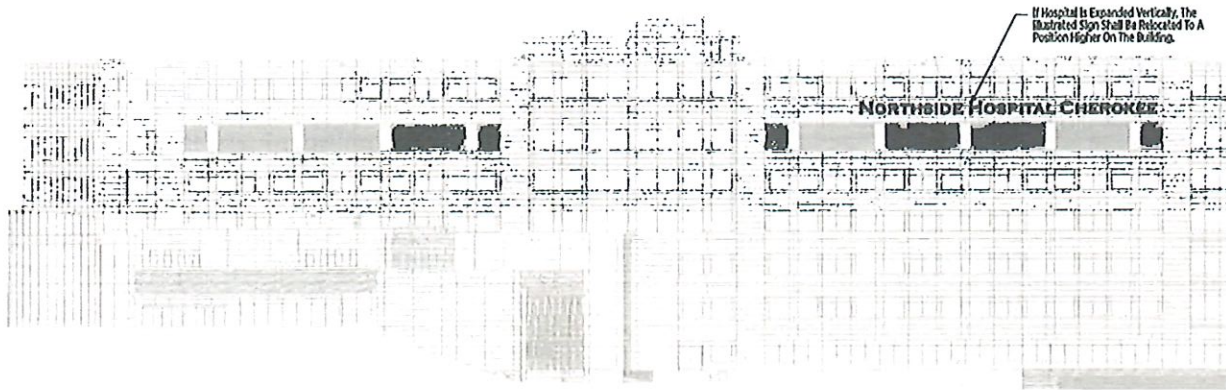
CARUSODRIVE City, TN 37615  
158 Riverchase Blvd, Suite 200  
Marietta, Georgia 30066

Copyright 2016 by Caruso & Dyer Design Group Inc.  
All Rights Reserved. This Document & the Design  
Illustrated Are the Property of Caruso & Dyer Design  
Group Inc. It is to be Used Only For The Specific  
Project Identified or Referenced To Herein And is Not To  
Be Used For Any Other Project Without the  
Express Written Agreement With And  
Consentation To Caruso & Dyer Design Group Inc.

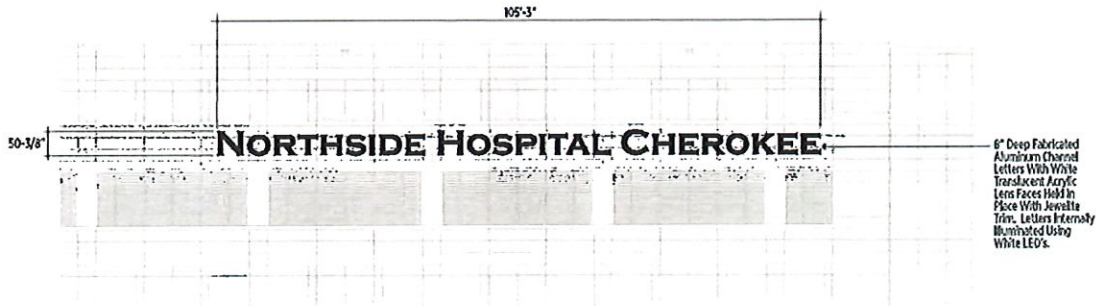
**18** Location 18  
Hospital Identifier  
North Elevation

18





**A** Overall North Hospital Elevation  
Scale: 1/32" = 1'-0"



**B** Partial North Elevation  
Scale: 1/16" = 1'-0"



**NORTHSIDE HOSPITAL  
CHEROKEE**  
Site Graphics & Signage

12 Aug 2016 Issued For Review  
18 Aug 2016 Issued To City of Canton

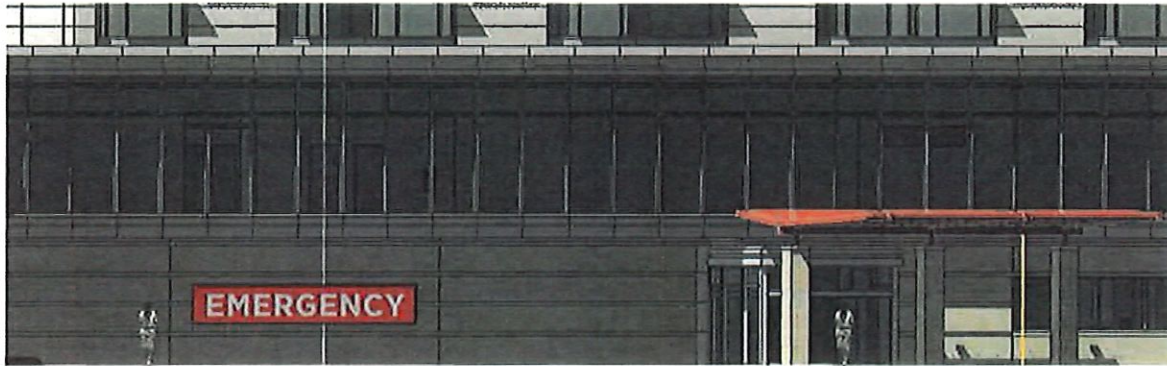
CARUSODRIVE (770) 794-6350  
3750 Howell Street, Suite 200  
Kennesaw, Georgia 30144

Copyright 2016 by Caruso & Drye Design Group, Inc.  
All Rights Reserved. This Document & The Designs  
Illustrated Are The Property Of Caruso & Drye Design  
Group, Inc. & Are To Be Used Only For The Specific  
Project Identified Or Intended To Be Used And Is Not To  
Be Used For Any Other Project. In Whole Or Part.  
Except By Express Written Agreement With And  
Compensation To Caruso & Drye Design Group, Inc.

**18** Location 18  
Hospital Identifier  
North Elevation

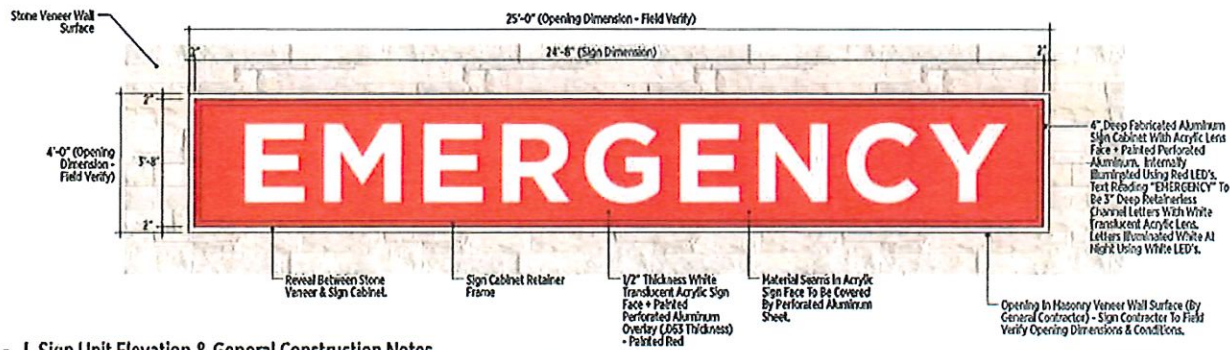
18.1





**NORTHSIDE HOSPITAL  
CHEROKEE**

Site Graphics & Signage



**A | Sign Unit Elevation & General Construction Notes**  
Scale: 3/8" = 1'-0"

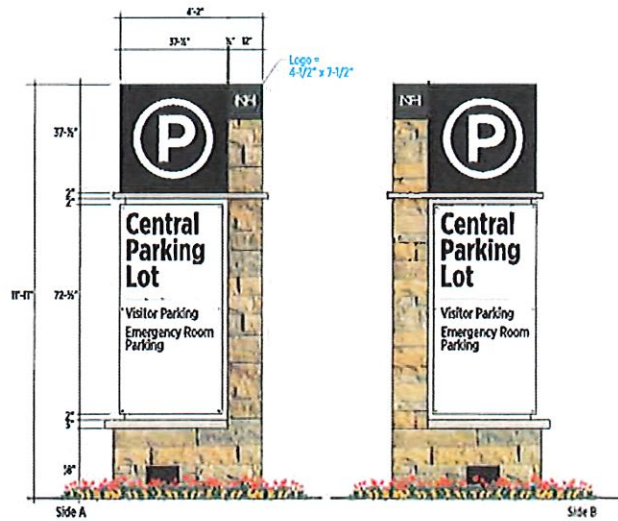
12/20/2016 Issued For Review  
12/20/2016 Issued To City of Canton

**CARUSODRIVE** (478) 775-7545  
701 Russell Street, Suite 207B  
Kennesaw, Georgia 30144

Copyright 2016 by Caruso & Dry Design Group, Inc. All Rights Reserved. This Document & The Designs Herein Are The Property Of Caruso & Dry Design Group, Inc. It is to be used only for the specific project identified on the title block and is not to be used for any other project without the prior written consent of Caruso & Dry Design Group, Inc.

**19** Location 19  
Inset Wall Sign @  
Emergency Entry





# Site Graphics & Signage

12 Aug 2016 Issued For Review  
18 Aug 2016 Issued To City of Canton

CARUSODRIVE (913) 770-1400  
10100 Sunset Blvd, Suite 2000  
Overland Park, KS 66209

Copyright 2016 by Caruso & Drye Design Group, Inc.  
All Rights Reserved. This document and the designs  
herein are the property of Caruso & Drye Design  
Group, Inc. It is to be used only for the specific  
project identified in the contract. It is not to be  
used for any other project, in whole or in part,  
without the express written consent of Caruso &  
Drye Design Group, Inc.

20 Location 20  
Parking Entry  
Identifier

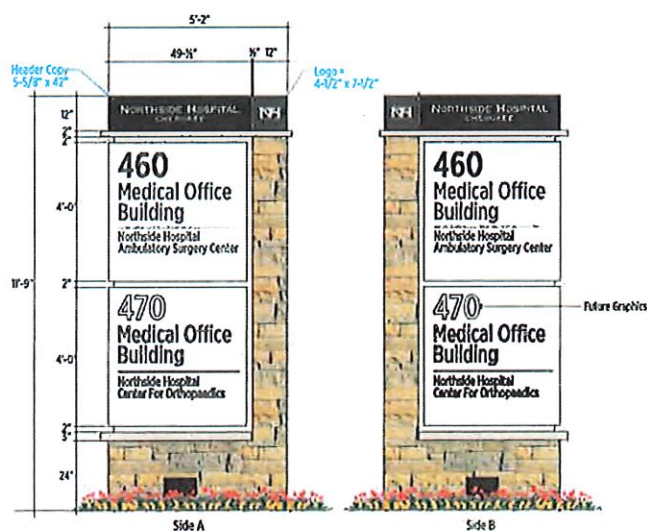
20





**NORTHSIDE HOSPITAL  
CHEROKEE**

Site Graphics & Signage



12 Aug 2016 Issued For Review  
14 Aug 2016 Issued To City of Canton

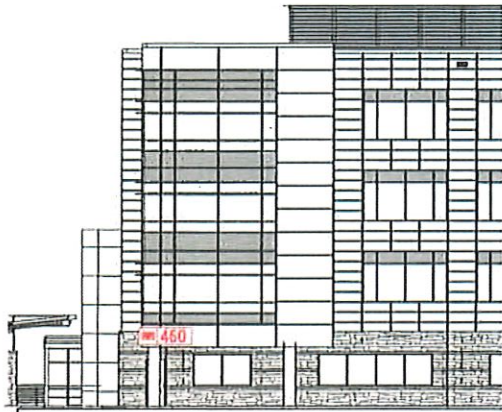
CARUSODRYE (770) 775-6000  
370 Roswell Street, Suite 200B  
Kennesaw, Georgia 30144

Copyright 2016 by Caruso & Drye Design Group, Inc.  
All Rights Reserved. This Document & The Design  
It Contains Are The Property Of Caruso & Drye Design  
Group, Inc. It Is To Be Used Only For The Specific  
Project Identified Or Referred To Herein And Is Not To  
Be Used For Any Other Project, In Whole Or Part.  
Except By Express Written Agreement With And  
Compensation To Caruso & Drye Design Group, Inc.

**21** Location 21  
Medical Office  
Building Identifier

21

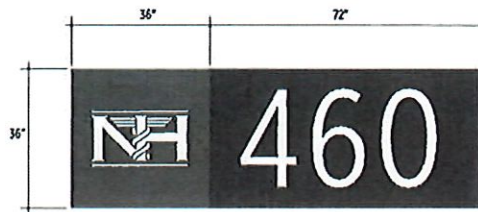




**A** Partial North Elevation  
Scale: 1/16" = 1'-0"



**B** East Elevation  
Scale: 1/16" = 1'-0"



**NH**  
**NORTHSIDE HOSPITAL**  
**CHEROKEE**  
Site Graphics & Signage



12 Aug 2016 Issued For Review  
18 Aug 2016 Issued To City of Canton

**CARUSODRYE** (770) 754-0100  
310 Russell Street, Suite 2100 www.carusodrye.com  
Marietta, Georgia 30060

Copyright 2016 by Caruso & Drye Design Group, Inc.  
All Rights Reserved. This Document & The Design  
Brought to the Property of Caruso & Drye Design  
Group, Inc. It is to be Used Only For The Specific  
Project Identified On Internal To Be Used And Is Not To  
Be Used For Any Other Project Without Our Part.  
Except by Express Written Agreement With And  
Compensation To Caruso & Drye Design Group, Inc.

**22** Location 22  
Medical Office  
Building Address #

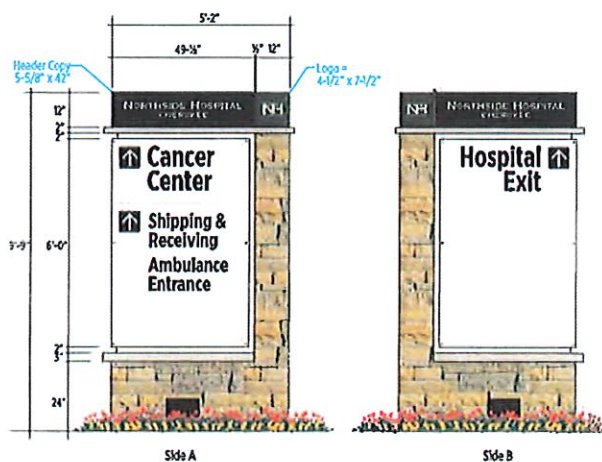
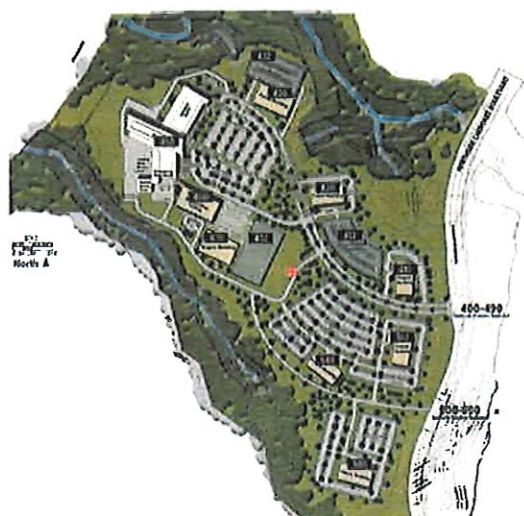
22





**NH**  
NORTHSIDE HOSPITAL  
CHENOWETH

Site Graphics & Signage



12Aug2016 Issued For Review  
 18Aug2016 Issued To City of Canton

CARUSODRIVE (770) 773-4233  
 154 Roswell Street, Suite 2000 Atlanta, Georgia 30309

Copyright 2016 by Caruso & Bryn Design Group, Inc.  
 All Right Reserved. This Document & The Design  
 Belonged To The Property Of Caruso & Bryn Design  
 Group, Inc. It Is To Be Used Only For The Specific  
 Project Identified Or Referred To Herein And It Not To  
 Be Used For Any Other Project, In Whole Or Part.  
 Except By Express Written Agreement With And  
 Compensation To Caruso & Bryn Design Group, Inc.

**23** Location 23  
 Directional Sign

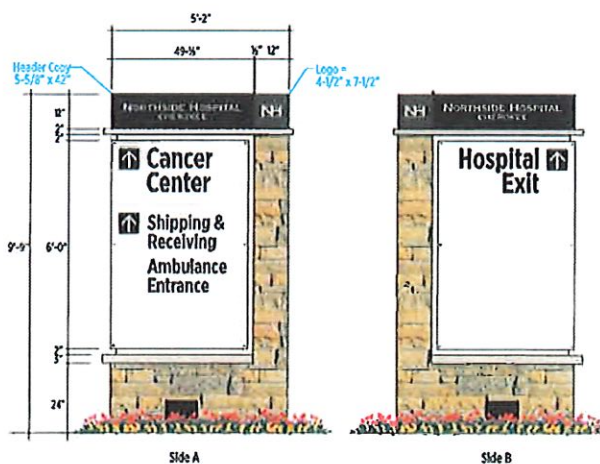
23





**NORTHSIDE HOSPITAL  
CHEROKEE**

Site Graphics & Signage



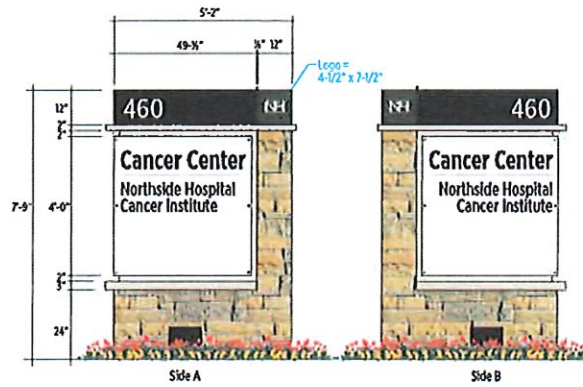
12 Aug 2016 Issued For Review  
18 Aug 2016 Issued To City of Canton

CARUSODRIVE 971.770.4255  
354 Howell Street, Suite 200B www.carusodrive.com  
Marietta, Georgia 30068

Copyright 2016 by Carus & Drye Design Group, Inc.  
All Rights Reserved. This Document & the Designs  
Illustrated Are the Property of Carus & Drye Design  
Group, Inc. & Its Use Only For The Specific  
Project Identified On Herein And Is Not To  
Be Used For Any Other Project, In Whole Or Part.  
Except By Express Written Agreement With And  
Cooperation To Carus & Drye Design Group, Inc.

**24** Location 24  
Directional Sign





Site Graphics & Signage

12 Aug 2016 Issued For Review  
14 Aug 2016 Issued To City of Cherokee

CARUSODRIVE (770) 294-6566  
308 Roswell Street, Suite 200  
Marietta, Georgia 30060

Copyright 2016 by Caruso & Drye Design Group, Inc.  
All Rights Reserved. This document and the designs  
illustrated are the property of Caruso & Drye Design  
Group, Inc. It is to be used only for the specific  
project identified or referred to herein and is not to  
be used for any other project, in whole or part.  
Except by Express Written Agreement 100% and  
compensation to Caruso & Drye Design Group, Inc.

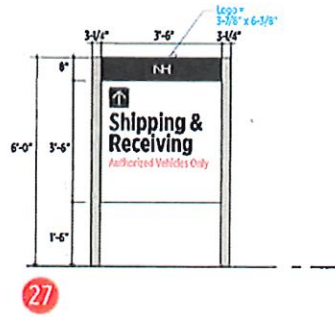
25 Location 25  
Directional Sign

25





26



27



**NORTHSIDE HOSPITAL  
CHEROKEE**  
Site Graphics & Signage

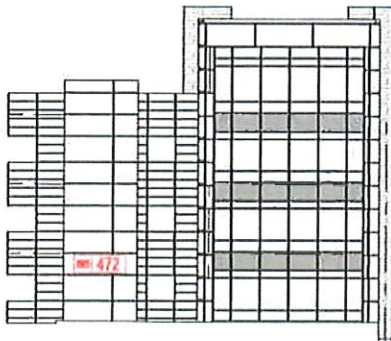
12/20/2016	Issued For Review
12/20/2016	Issued To City of Canton

**CARUSODRIVE** (770) 774-6300  
228 Howell Street, Suite 207B  
Marietta, Georgia 30060

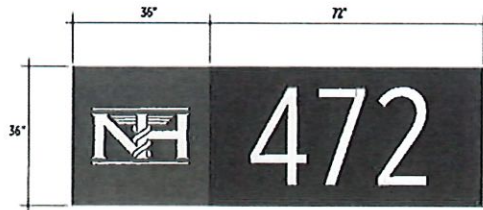
Copyright 2016 by Caruso & Day Design Group, Inc.  
All Rights Reserved. This Document & The Designs  
Illustrated Are The Property Of Caruso & Day Design  
Group, Inc. & It Is To Be Used Only For The Specific  
Project Indicated Or Authorized To Handle And Is Not To  
Be Used For Any Other Project, In Whole Or Part.  
Except By Express Written Agreement With And  
Consentation To Caruso & Day Design Group, Inc.

26 27 Locations 26 & 27  
Directional Signs





**A** Partial North Elevation  
Scale: 1/16" = 1'-0"



**B** Graphic Details  
Scale: 1/2" = 1'-0"



**NH**  
NORTHSIDE HOSPITAL  
CHEROKEE

Site Graphics & Signage



12 Aug 2015 Issued For Review  
18 Aug 2016 Issued To City of Canton

CARUSODRYE 478.394.5150  
358 Roman & Street, Suite 2700  
Atlanta, Georgia 30303

Copyright 2016 by Caruso & Drye Design Group, Inc.  
All Rights Reserved. This Document & The Design  
Blottings Are The Property Of Caruso & Drye Design  
Group, Inc. & It Is To Be Used Only For The Specific  
Project Identified On Referral To Caruso & Drye Design  
Group, Inc. & It Is Not To Be Used For Any Other Project In Whole Or Part.  
Except By Express Written Agreement With And  
Compensation To Caruso & Drye Design Group, Inc.

**28** Location 28  
Parking Deck  
Address Marker

28





**NH**  
NORTHSIDE HOSPITAL  
CHEROKEE

#### Site Graphics & Signage

- Phase 1b Signs  
Future Hospital Campus Signs -  
Exact Locations Subject to  
Modification Based On  
Final Building Design/Site Plan

12/01/2015	Issued For Review
03/02/2016	Issued To City of Canton

CARUSODRYE 07779440700  
300 Peach Street, Suite 2000  
Marietta, Georgia 30060

Copyright 2014 by Caruso & Drye Design Group, Inc.  
All Rights Reserved. This document and the design  
thereof are the property of Caruso & Drye Design  
Group, Inc. It is to be used only for the specific  
project identified on the cover sheet and is not to  
be used for any other project, in whole or in part,  
except by express written agreement with and  
compensation to Caruso & Drye Design Group, Inc.

F1-F14



**City of Canton**  
**Master Plan Signage**  
**Phase One “ONLY” Revision**

**8-4-25**

*Submitted for approval 8-13-25*



Approved | 09.15.2016

Proposed Amendments | 08.04.2025

# Canton Place Master Sign Plan

Issued For City of Canton Review | 18August2016



The background image shows a wide-angle view of a road intersection. In the foreground, a road with white lane markings leads towards a traffic light pole with four red lights. To the right, a building with a sign is visible. The sky is bright and overcast.

# Contents

## Phase One: Northside Hospital Cherokee Campus Signage





Approved | 09.15.2016

Proposed Amendments | 08.04.2025


# Phase One: Northside Hospital Cherokee


Proposed Campus Signage | 18August2016





Development Overview





**NORTH SIDE HOSPITAL  
CHEROKEE**

Site Graphics & Signage

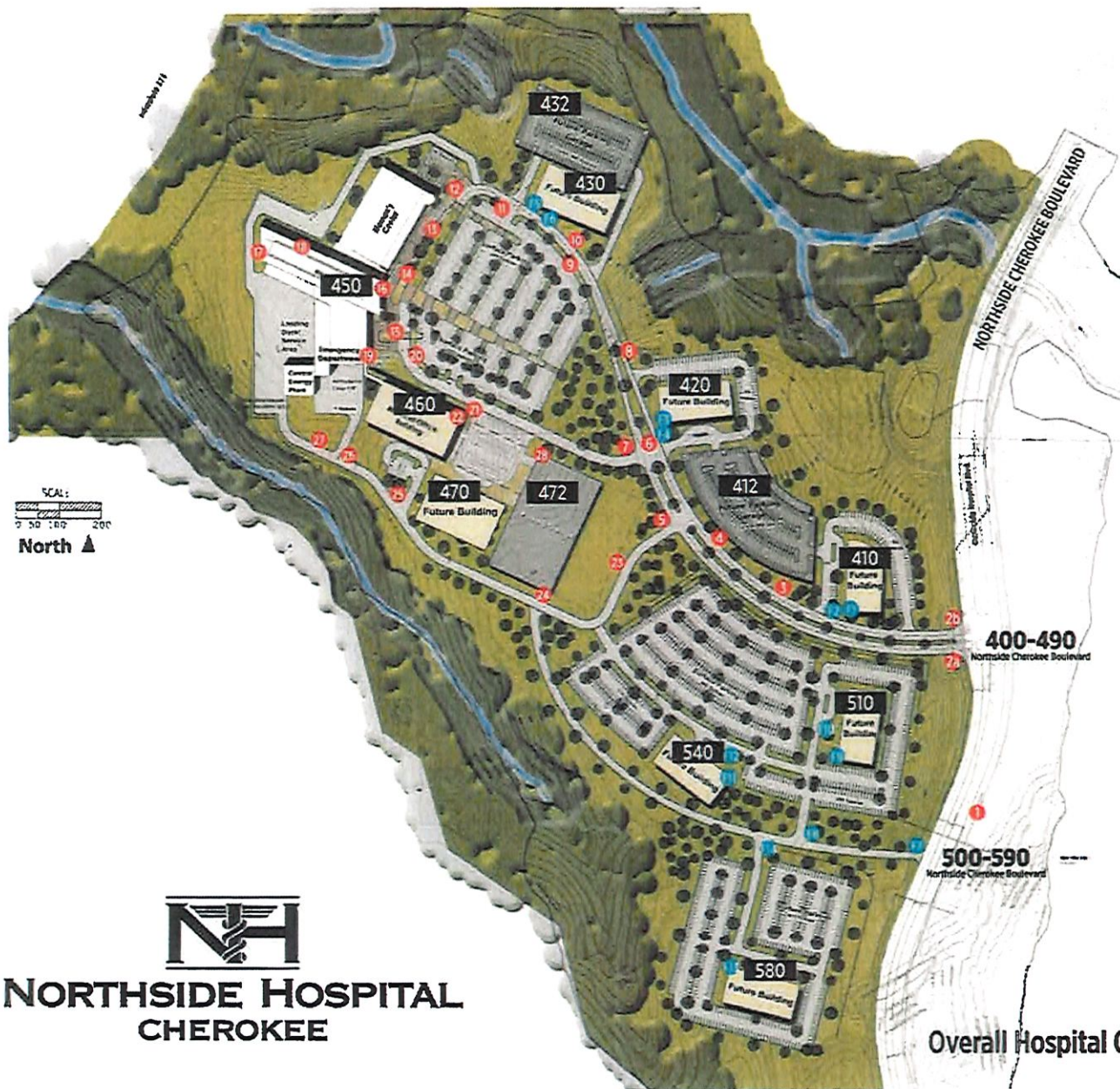
12Aug2015	Issued For Review
18Aug2016	Issued To City of Canton
15Sep2016	Approved By City of Canton
04Aug2020	Proposed Amendments

**CARUSODRYE** 97.770.754.0000  
 528 Riverside Dr. Suite 400-111  
 Marietta, Georgia 30090

Copyright 2025 By Caruso & Drye Design Group, Inc.  
 All Rights Reserved. This Document & The Design  
 Published Are The Property Of Caruso & Drye Design  
 Group, Inc. It Is To Be Used Only For The Design  
 Project Identified Or Related To Project Area Is Not To  
 Be Used For Any Other Project, In Whole Or Part,  
 Except By Express Written Agreement With And  
 Compensation To Caruso & Drye Design Group, Inc.

Overall Campus Plan  
 (Hospital & Future  
 Development)





**NH**  
**NORTHSIDE HOSPITAL**  
**CHEROKEE**



**NH**  
**NORTHSIDE HOSPITAL**  
**CHEROKEE**

**Site Graphics & Signage**

12/10/2014	Issued For Review
14/10/2014	Revised To City of Canton
15/10/2014	Approved by City of Canton
04/10/2015	Processed Amendments

**CARUSODRYE** (770) 754-0000  
 531 Riverside Dr., Suite 300-110  
 Marietta, Georgia 30067

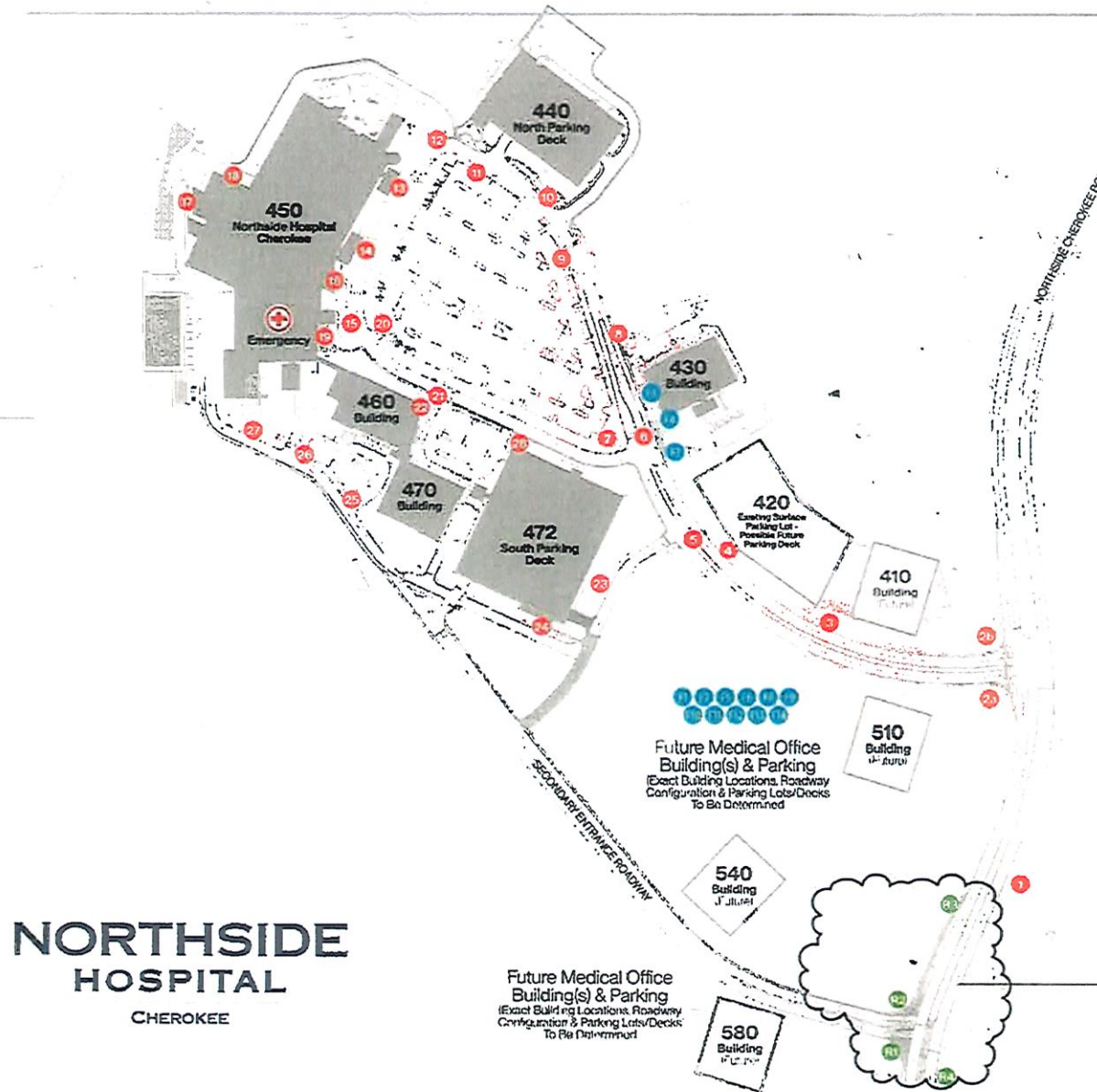
Copyright 2015 by CarusoDrye Drive Design Group, Inc.  
 All Rights Reserved. This Document & The Graphics  
 Illustrated Are The Property Of CarusoDrye Drive Design  
 Group, Inc. It Is To Be Used Only For The Specific  
 Project Identified Or Referred To Herein And Is Not To  
 Be Used For Any Other Project Without The Prior  
 Written Consent Of CarusoDrye Drive Design Group, Inc.

**Hospital Campus Plan**

**0.1 (Original)**



# Updated / Current Hospital Campus Plan



## Legend

### Previously Approved & Installed Hospital Campus Signs

Hospital Identification Signs, Visitor Wayfinding Signs, Medical Office Building Identification Signs, Etc.

### Future Hospital Campus Signage

\*The Specific Location & Type Of Future Hospital Signs Shall Be Determined At A Later Date Based On Future Building Locations, Building Architecture, Wayfinding Requirements & Life Safety Considerations. Design (Appearance, Colors, Materials, General Sizing) Of Future Hospital Signage Shall Be Consistent With Existing Internal Campus Signage Design Standards. Monument Signage shall have a maximum height of 12'-0" from grade with a maximum sign area of 150sf. As previously approved, building wall signage / building address signage sizing will vary by building structure based on architectural design and context.

### Proposed Revisions: New Hospital Campus Signage

New Signage As Required For New Secondary Campus Entrance, Patient Wayfinding To Emergency Services, and Ambulance Wayfinding.

- R1 Secondary Campus Identification Monument Sign With Stone Base. Illuminated.
- R2 Secondary Campus Identification Monument Sign With Stone Base. Illuminated.
- R3 Campus Standard Directional Sign With Stone Base. Sign To Be Positioned Back of Right Of Way
- R4 Campus Standard Directional Sign With Stone Base. Sign To Be Positioned Back of Right Of Way

REVISED



**NH**  
NORTHSIDE HOSPITAL  
CHEROKEE

Site Graphics & Signage

07Aug2016	Issued For Review
18Aug2016	Issued To City of Canton
02Sep2016	Approved by City of Canton
04Aug2020	Processed Amendments

**CARUSODRYE** 771.770.0200  
1430 Lawrence St., Suite 200, NE  
Marietta, Georgia 30060

Copyright 2020 by Caruso & Drye Design Group, Inc.  
All Rights Reserved. The Document & The Designs  
Submitted Are The Property Of Caruso & Drye Design  
Group, Inc. It Is To Be Used Only For The Specific  
Project Described Or Related To Herein And Is Not To  
Be Used For Any Other Project Without The Prior  
Written Approval Of Caruso & Drye Design Group, Inc.

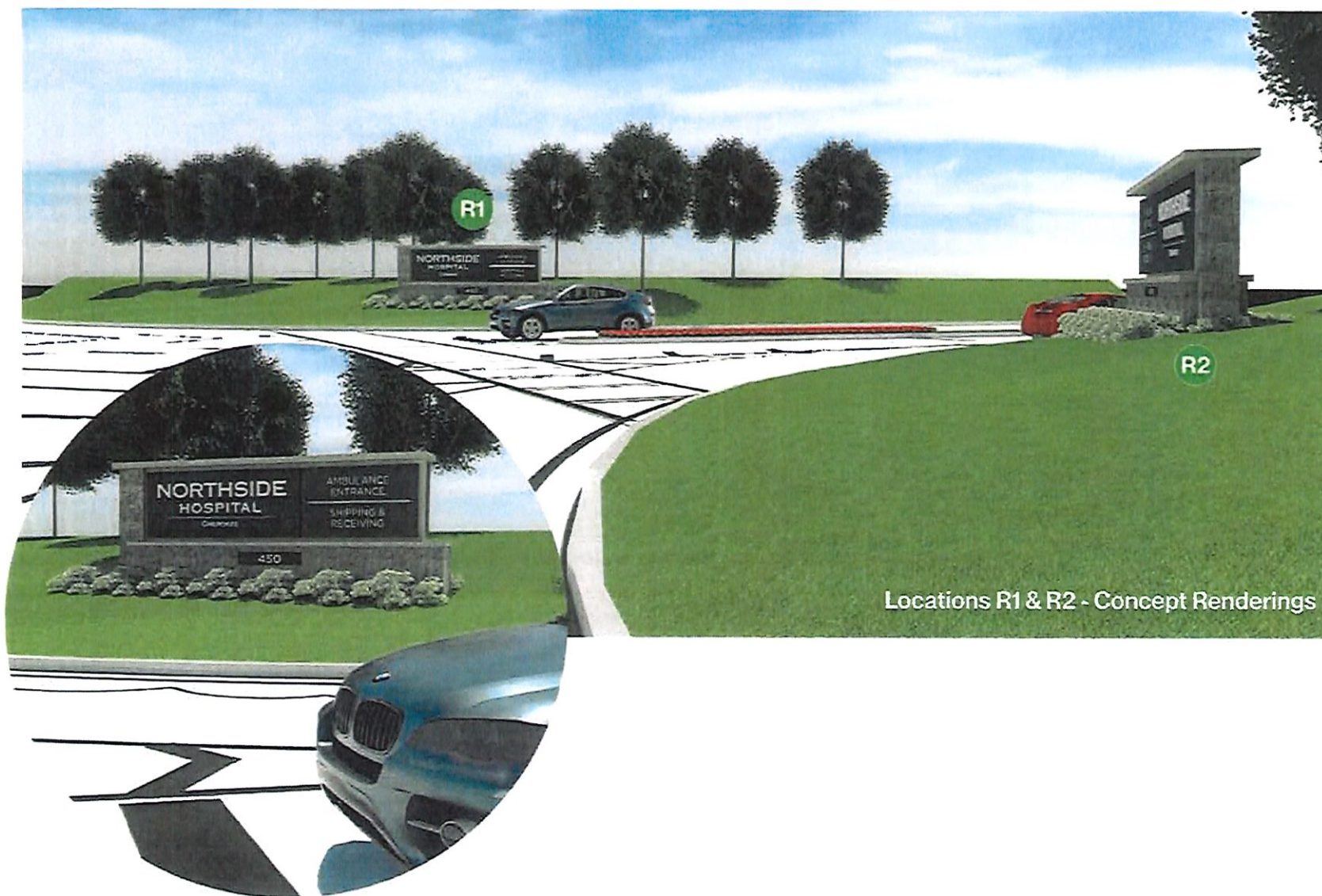
Hospital Campus  
Sign Plan

0.1 (Amended)



# Proposed Revisions: New Hospital Campus Signage

New Signage As Required For New Secondary Campus Entrance, Patient Wayfinding To Emergency Services, and Ambulance Wayfinding.



Locations R1 & R2 - Concept Renderings



**NORTHSIDE HOSPITAL  
CHEROKEE**

Site Graphics & Signage

12Aug2018	Issued For Review
19Aug2018	Issued To City of Canton
10Sep2018	Approved by City of Canton
04Aug2025	Proposed Amendments

**CARUSODRYE** 678.770.7540 03/00  
131 Riverchase Dr., Suite 300-100  
Atlanta, Georgia 30329

Copyright 2018 by Caruso & Drye Design Group, Inc.  
All Rights Reserved. This document and the design  
herein are the property of Caruso & Drye Design  
Group, Inc. It is to be used only for the specific  
project and location of the project. It is not to be  
used for any other project, in whole or in part.  
Without the express written agreement of Caruso &  
Drye Design Group, Inc.

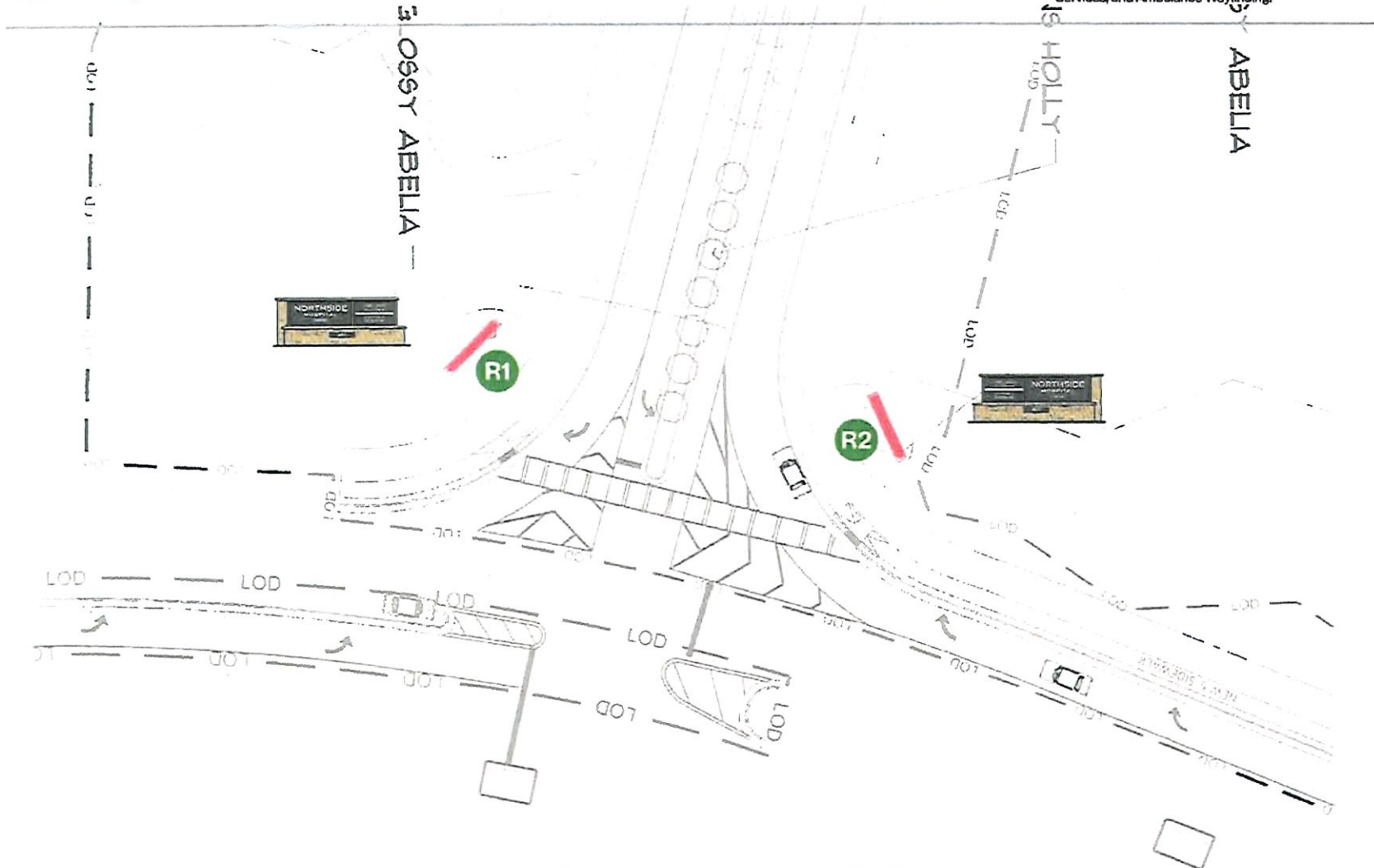
**R1 Locations R1 & R2  
R2 Secondary Campus  
Entry Monuments**

R1-R2a



# Proposed Revisions: New Hospital Campus Signage

New Signage As Required For New Secondary Campus Entrance, Patient Wayfinding To Emergency Services, and Ambulance Wayfinding.



**NH**  
NORTHSIDE HOSPITAL  
CHEROKEE  
Site Graphics & Signage

12/16/2016	Issued For Review
1/14/2017	Revised To City of Canton
1/24/2017	Approved By City of Canton
1/24/2017	Processed Amendments

**CARUSODRYE** 1170 754 0000  
675 Riverchase Dr., Suite 200-101  
Marietta, Georgia 30067

Copyright 2016 By Caruso & Drye Design Group, Inc.  
All Rights Reserved. This "Drawing" & The Drawings  
Illustrated Are The Property Of Caruso & Drye Design  
Group, Inc. It Is To Be Used Only For The Specific  
Project Identified On The Project To Which It Is To  
Be Used For Any Other Project, In Whole Or Part,  
Except By Express Written Agreement With And  
Consent Of Caruso & Drye Design Group, Inc.

**R1** Locations R1 & R2  
**R2** Secondary Campus  
Entry Monuments

R1-R2b

**A** Site Plan Detail @ Northside Cherokee Boulevard (Master Sign Plan Locations 28 & 29)  
Scale: 1" = 30'-0"



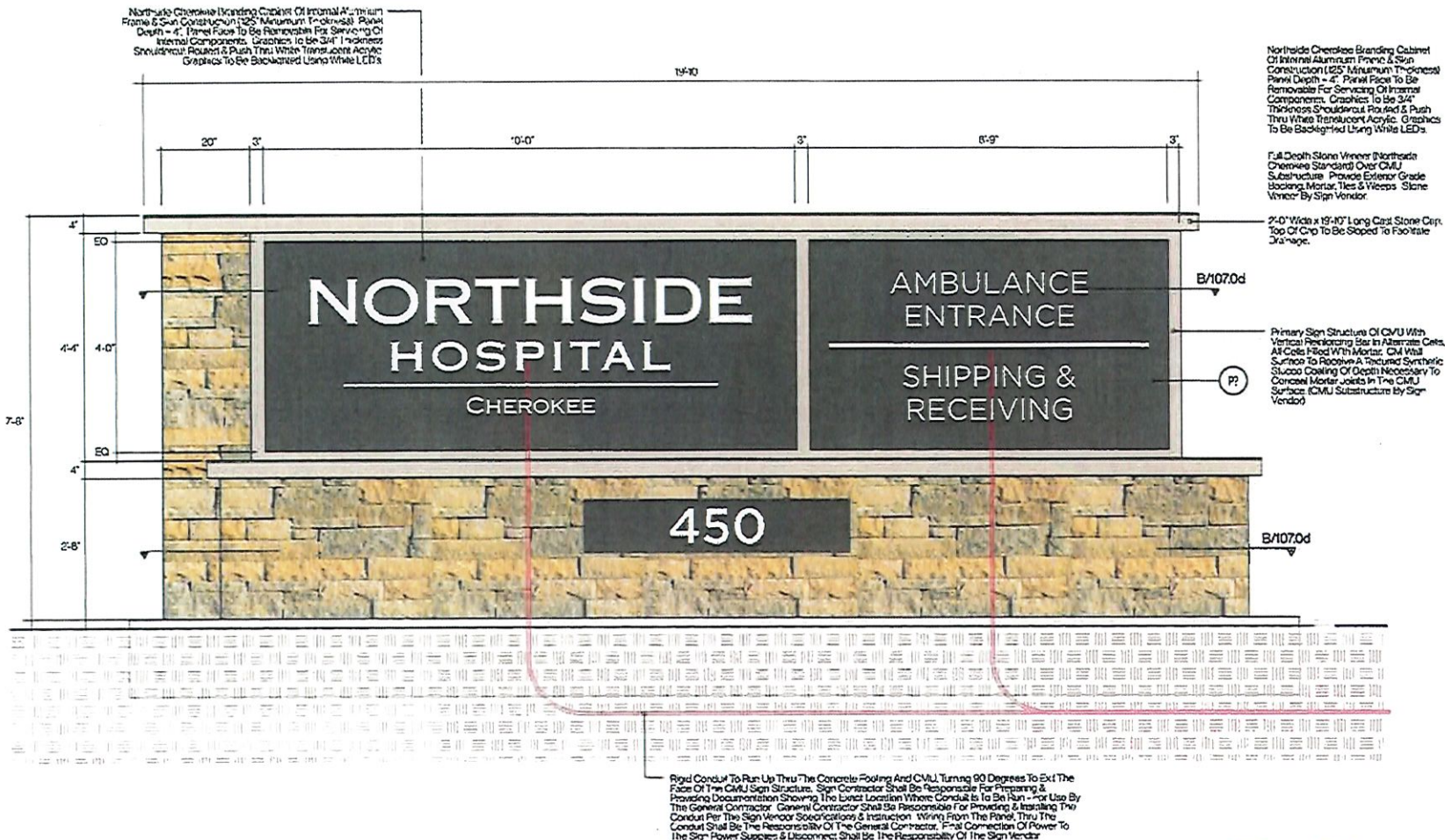
# Proposed Revisions: New Hospital Campus Signage

New Signage As Required For New Secondary Campus Entrance, Patient Wayfinding To Emergency Services, and Ambulance Wayfinding.



**NORTHSIDE HOSPITAL  
CHEROKEE**

Site Graphics & Signage



12Aug2016	Issued For Review
18Aug2016	Issued To City of Canton
15Sep2016	Approved By City of Canton
04Aug2022	Processed Amendments

**CARUSODRIVE** 878.775.6100  
521 Powers Dr. Suite 400-100  
Marietta, Georgia 30066

Copyright © 2025 by Caruso & Drive Design Group, Inc. All Rights Reserved. This Document is the Property of Caruso & Drive Design Group, Inc. It is to be Used Only For The Specific Project It Was Designed For. No Part of This Document is to be Used for Any Other Project Without the Written Consent of Caruso & Drive Design Group, Inc.

**R1 Locations R1 & R2  
R2 Secondary Campus  
Entry Monuments**

**R1-R2c**

**A Front Elevation (South Entry Sign - North Entry Sign Is Similar)**  
Scale: 1/2" = 1'-0"

**R1 R2**



# Proposed Revisions: New Hospital Campus Signage

New Signage As Required For New Secondary Campus Entrance, Patient Wayfinding To Emergency Services, and Ambulance Wayfinding.

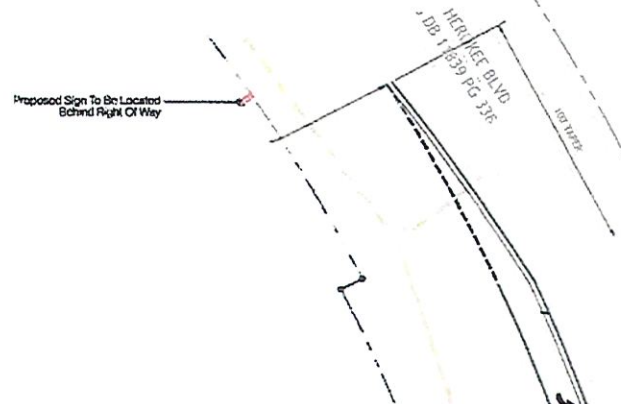
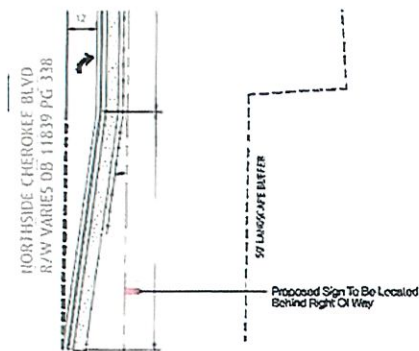


**A** Location R3 (New Sign)  
Scale: 3/8" = 1'-0"

**R3**

**B** Location R4 (New Sign)  
Scale: 3/8" = 1'-0"

**R4**



**C** Location R3 (New Sign)  
Scale: 1" = 40'-0"

**R3**

**D** Location R4 (New Sign)  
Scale: 1" = 40'-0"

**R4**



**NORTHSIDE HOSPITAL  
CHEROKEE**  
Site Graphics & Signage

12Aug2016	Issued For Review
18Aug2016	Issued To City of Canton
12Sep2016	Approved by City of Canton
04Aug2025	Proposed Amendments

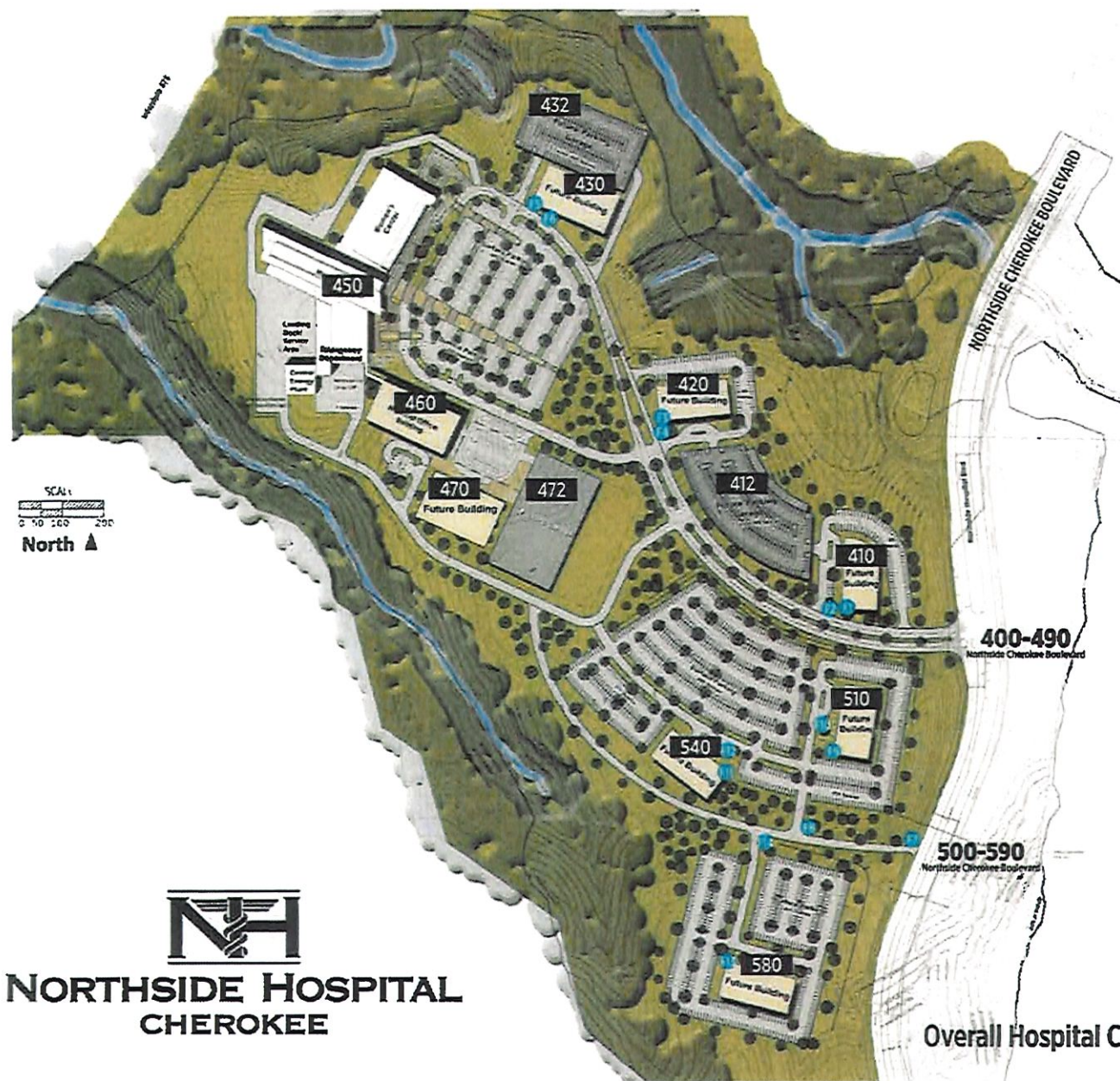
**CARUSODRIVE** 404.770.7544  
508 Rowles Dr. Suite 400-101 www.carusodrive.com  
Marietta, Georgia 30090

Copyright 2025 by Caruso & Drive Design Group, Inc.  
All Rights Reserved. This Document & The Designs  
Illustrated Are The Property Of Caruso & Drive Design  
Group, Inc. It Is To Be Used Only For The Specific  
Project Indicated Or Related To Invoiced And Is Not To  
Be Used For Any Other Project Without Our Prior  
Written Agreement. Your Use And  
Distribution To Other Parties Is Prohibited.

**R3** Locations R3 & R4  
**R4** Directional Signs @  
Northside-Cherokee  
Boulevard

R3-R4a





**NORTHSIDE HOSPITAL  
CHEROKEE**

Site Graphics & Signage

12Aug2016	Issued For Review
18Aug2016	Issued To City of Canton
15Sep2016	Approved by City of Canton
04Aug2025	Processed Amendment

**CARUSODRYE** 97.770.754 (0300)  
531 Riverside Dr., Suite 400-100, Marietta, Georgia 30067

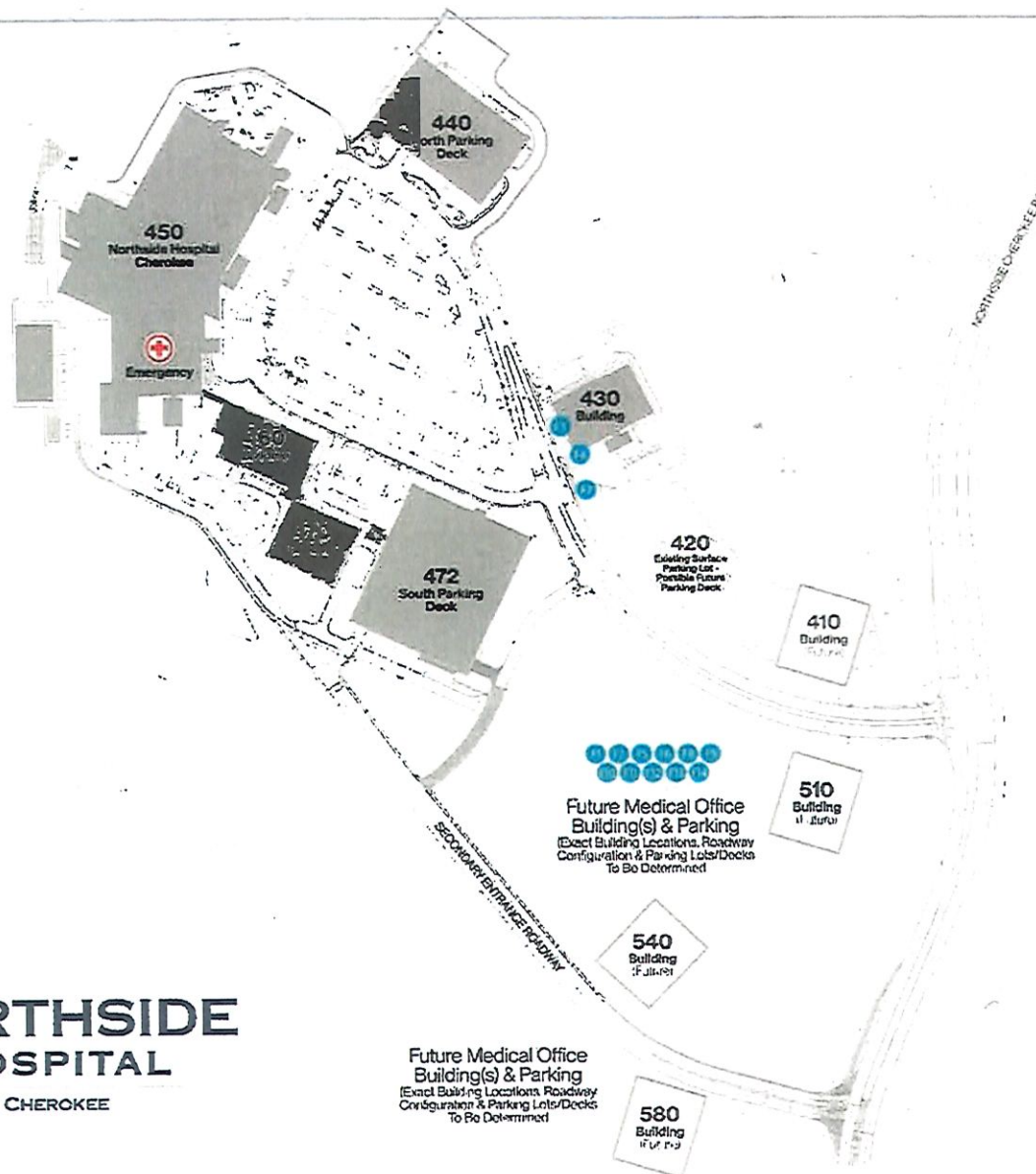
Copyright 2025 by Caruso & Drye Design Group, Inc.  
All Rights Reserved. This document and the designs  
illustrated are the property of Caruso & Drye Design  
Group, Inc. It is to be used only for the specific  
project identified or referred to herein and is not to  
be used for any other project. In Witness Whereof,  
Caruso & Drye Design Group, Inc.  
Competition To Caruso & Drye Design Group, Inc.

Original Campus Plan  
(Future Signage)

F1-F14 (Original)



# Updated / Current Hospital Campus Plan



## Legend

### ● Future Hospital Campus Signage

\*The Specific Location & Type Of Future Hospital Signs Shall Be Determined At A Later Date Based On Future Building Locations, Building Architecture, Wayfinding Requirements & Life Safety Considerations. Design (Appearance, Colors, Materials, General Sizing) Of Future Hospital Signage Shall Be Consistent With Existing Internal Campus Signage Design Standards. Monument Signage shall have a maximum height of 12'-0" from grade with a maximum sign area of 150sf. As previously approved, building wall signage / building address signage sizing will vary by building structure based on architectural design and context.



**NH**  
NORTHSIDE HOSPITAL  
CHEROKEE

Site Graphics & Signage

12Aug2016	Project For Review
18Aug2016	Issued To City Of Canton
10Sep2016	Approved By City Of Canton
04Aug2020	Processed Amendments

**CARUSODRYE** 770.794.0360  
5781 Rossmore Dr., Suite 400-101, Marietta, Georgia 30066  
www.carusodrye.com

Copyright 2020 By Caruso & Drye Design Group, Inc. All Rights Reserved. This document and the design contained herein are the property of Caruso & Drye Design Group, Inc. It is to be used only for the specific project outlined or referred to herein and is not to be used for any other project without the prior written consent of Caruso & Drye Design Group, Inc.

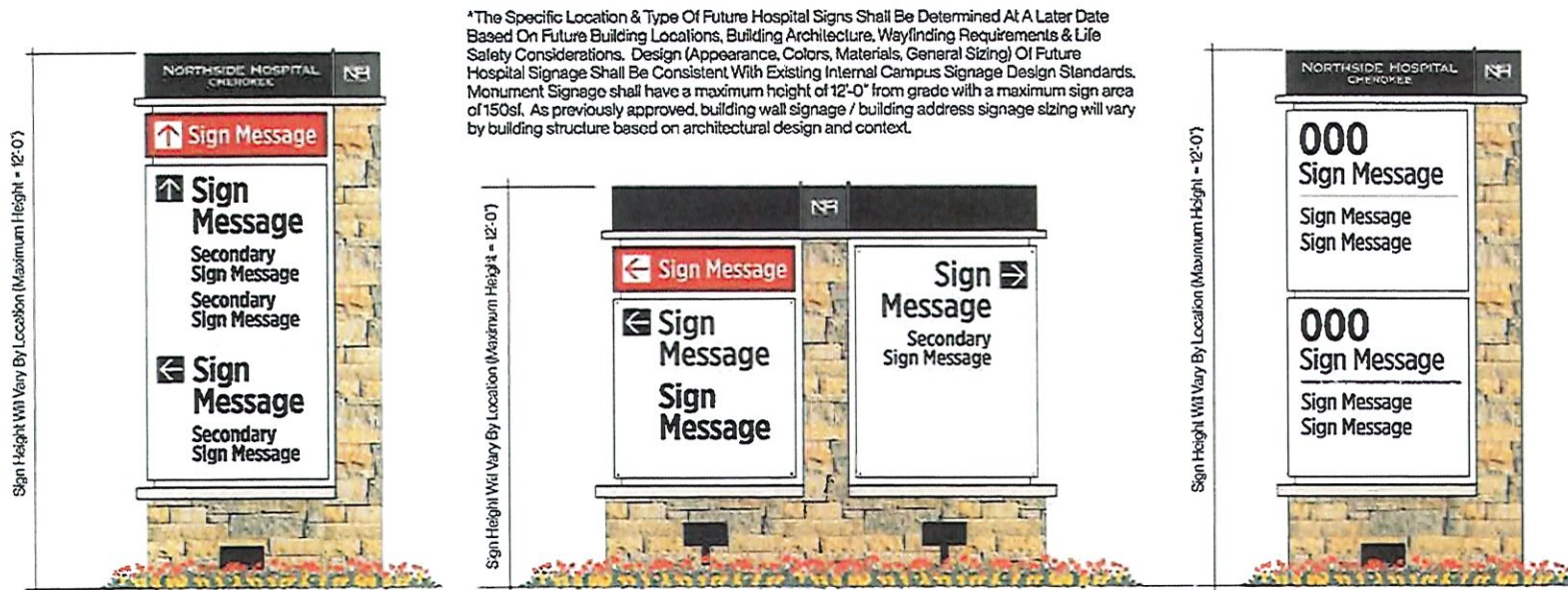
Amended Campus Plan  
(Future Signage)

**NORTHSIDE  
HOSPITAL**  
CHEROKEE

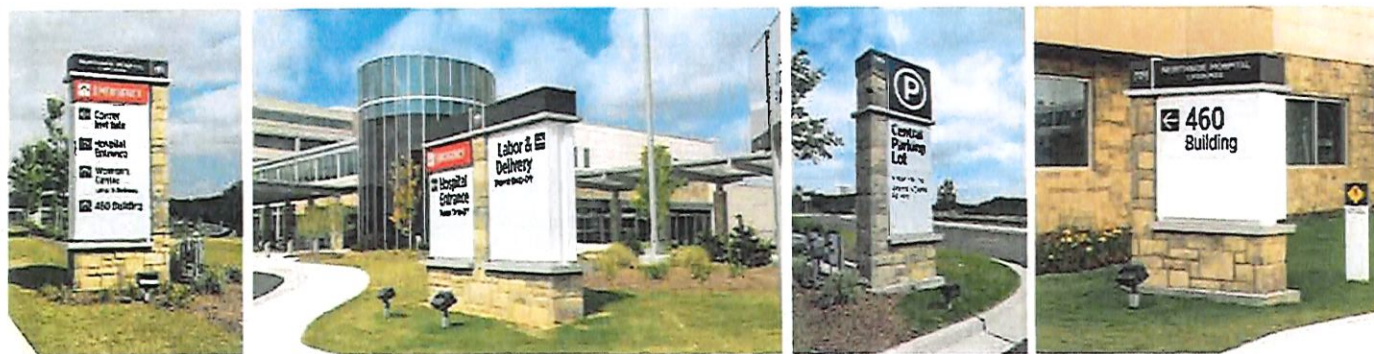
F1-F14 (Amended)



## Future Hospital Campus Signage (F1 to F14)



Examples of Future Signage General Appearance - Actual Sign Forms & Sign Messages Shall Vary By Location



Campus Wayfinding & Building Identification Monument Signage (Typical Examples)



**NH**  
NORTHSIDE HOSPITAL  
CHEROKEE  
Site Graphics & Signage

12/20/2016 Issued For Review  
18/02/2018 Revised To City of Canton  
10/09/2018 Approved by City of Canton  
04/08/2020 Proceeded Amendment

CARUSODRYE 1114 770 756 0070  
541 Rowena St., Suwanee, GA 30088  
www.carusodrye.com

Copyright 2020 by Caruso & Drye Group, Inc. All Rights Reserved. This document is the property of Caruso & Drye Group, Inc. It is to be used only for the specific project and is not to be used for any other project without the written consent of Caruso & Drye Group, Inc.

**Future Hospital  
Signage F1 to F14**

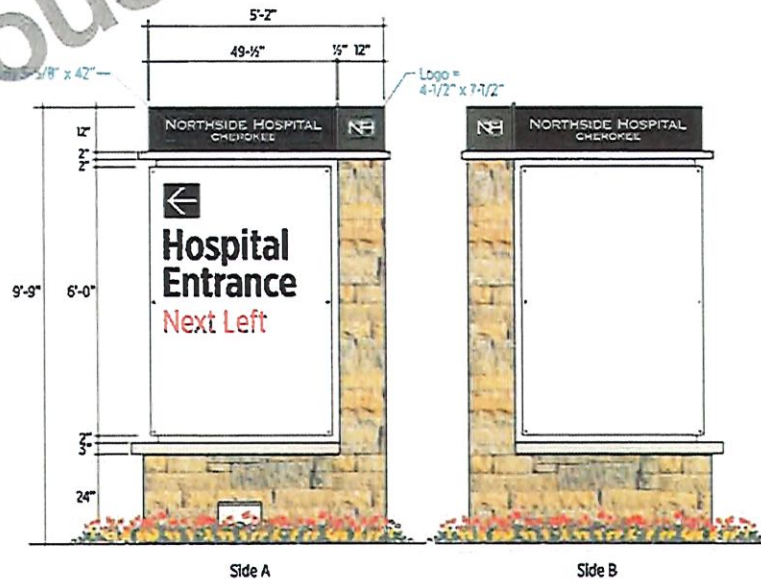
F1-F14a





**NORTHSIDE HOSPITAL  
CHEROKEE**

Site Graphics & Signage



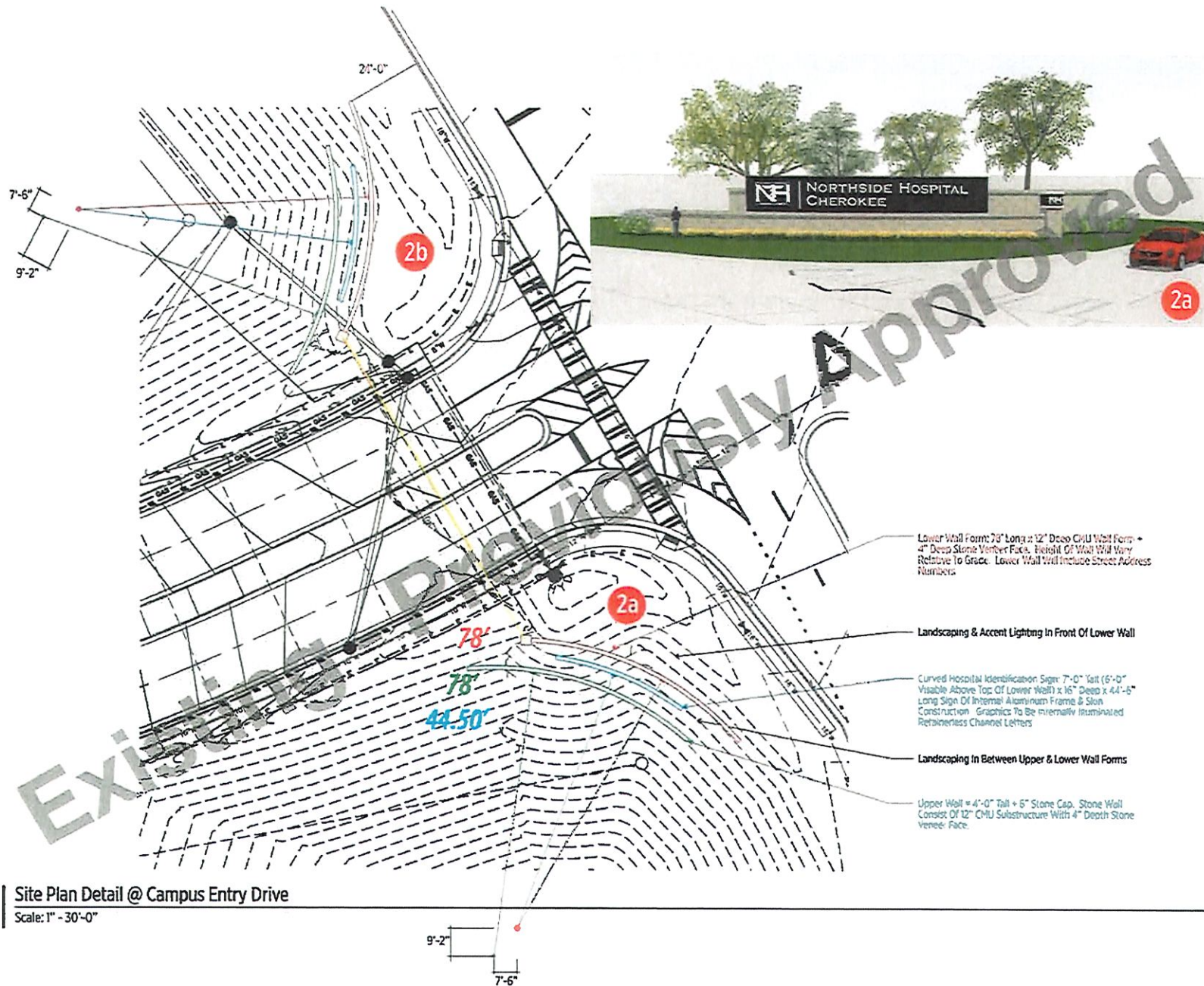
12Aug2016	Issued For Review
18Aug2016	Revised To City of Canton
15Sep2016	Approved By City of Canton
04Aug2020	Proposed Amendments

**CARUSODRYE** 678 720 296 0000  
140 Riverside Dr. Suite 400-100 www.carusodrye.com  
Marietta, Georgia 30067

Copyright 2025 by Caruso & Drye Design Group, Inc.  
All Rights Reserved. This Document & The Designs  
Illustrated Are The Property Of Caruso & Drye Design  
Group, Inc. It Is To Be Used Only For The Specific  
Project Indicated Or Referred To Herein And Is Not To  
Be Used For Any Other Project Without Written  
Consent By Caruso & Drye Design Group, Inc.  
Consent On To Caruso & Drye Design Group, Inc.

**1** Location 1  
Directional Sign





**NORTHSIDE HOSPITAL  
CHEROKEE**

Site Graphics & Signage

12/15/2016	Issued For Review
18/08/2016	Issued For City of Canton
15/09/2016	Approved By City of Canton
04/08/2025	Processed Amendment

**CARUSODRIVE** 679.770.2540  
520 Riverchase Dr., Suite 400, Marietta, Georgia 30066

Copyright 2025 By Caruso & Drive Design Group, Inc. All Rights Reserved. This Document & The Designs Published Are The Property Of Caruso & Drive Design Group, Inc. It Is To Be Used Only For The Specific Project Indicated Or Referred To Herein And Is Not To Be Used For Any Other Project. In Whole Or Part. Without The Express Written Agreement With And Consent From Caruso & Drive Design Group, Inc.

**2** Locations 2a/2b  
Campus Entrance  
Identification





Photo Study: Sign Location 2a (Location 2b is Identical On Opposite Side Of Entry Drive)



**NH**  
NORTHSIDE HOSPITAL  
CHEROKEE

Site Graphics & Signage

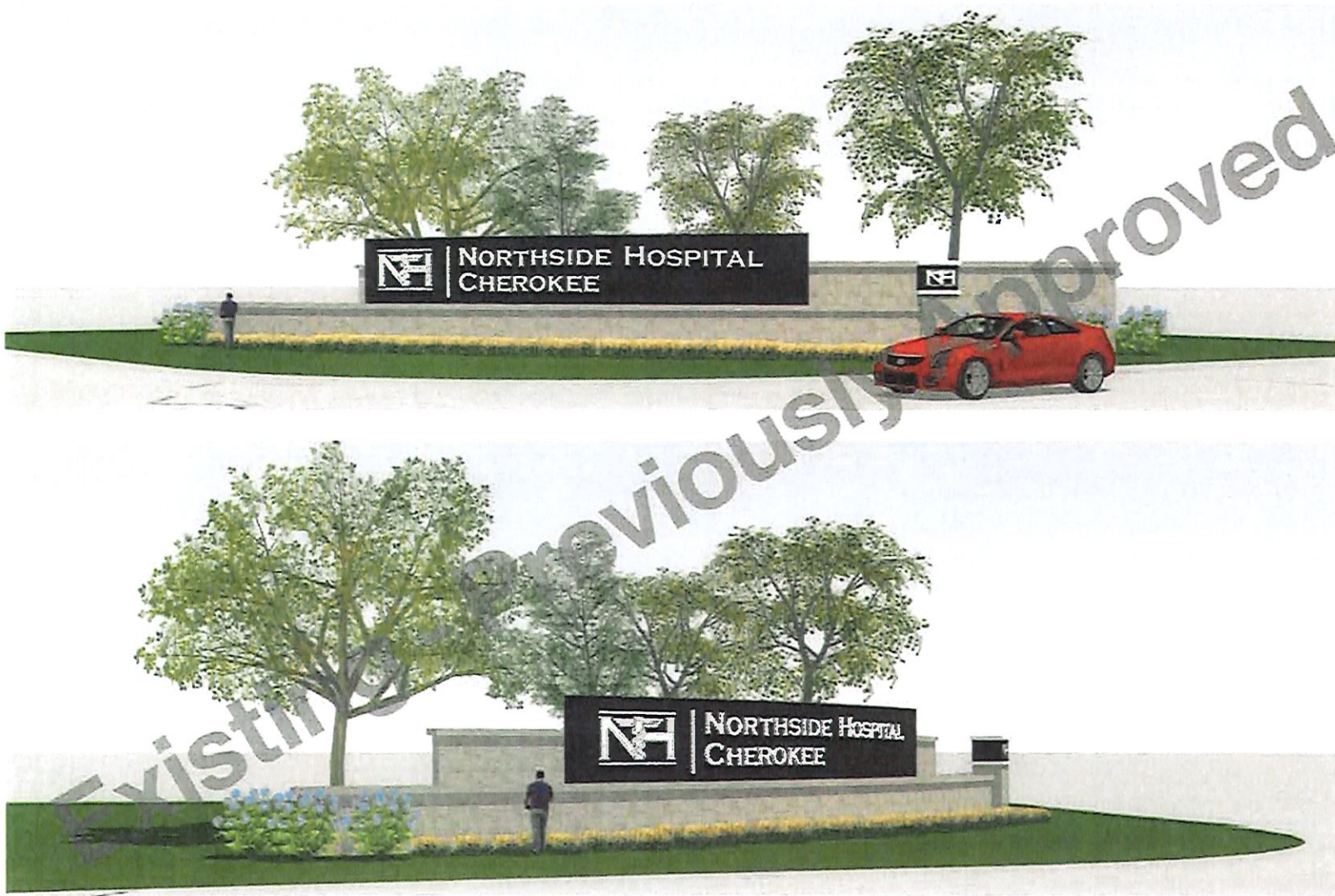
04/20/2019	Issued For Review
18/Aug/2019	Submitted To City of Canton
15/Sept/2019	Approved By City of Canton
04/Aug/2020	Processed Amendments

**CARUSODRYE** 1/1 270 754 02/0  
501 Rosewood Dr. Suite 400-110  
Marietta, Georgia 30067

Copyright 2020 by Caruso & Drye Design Group, Inc.  
All Rights Reserved. This Document & The Design  
Material Are The Property Of Caruso & Drye Design  
Group, Inc. It Is To Be Used Only For The Specific  
Project It Was Designed For. No Part Of This  
Document May Be Reproduced Or Transmitted In  
Any Form Or By Any Means Without Written  
Consent Of Caruso & Drye Design Group, Inc.

**2** Locations 2a/2b  
Campus Entrance  
Identification





Model Study: Sign Location 2a (Location 2b is Identical On Opposite Side Of Entry Drive)



**NH**  
NORTHSIDE HOSPITAL  
CHEROKEE

Site Graphics & Signage

12Aug2016	Issued For Review
18Aug2016	Issued To City of Canton
15Sep2016	Approved By City of Canton
04Aug2025	Processed Amendment

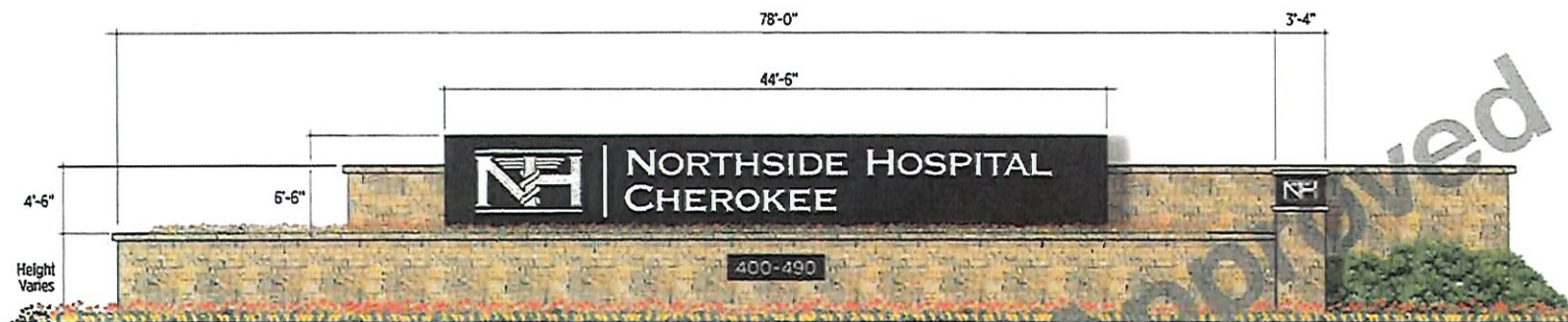
**CARUSODRIVE** 1770 75th AVE SW  
431 FIVEWAYS ST., SUITE 400-115  
MARIETTA, GEORGIA 30067

Copyright 2025 by Caruso & Drive Design Group, Inc.  
All Rights Reserved. This Document & The Designs  
Published Herein Are The Property Of Caruso & Drive Design  
Group, Inc. It Is To Be Used Only For The Specific  
Project Identified Or Referred To Herein And Is Not To  
Be Used For Any Other Project Without The Prior  
Written Consent Of Caruso & Drive Design Group, Inc.

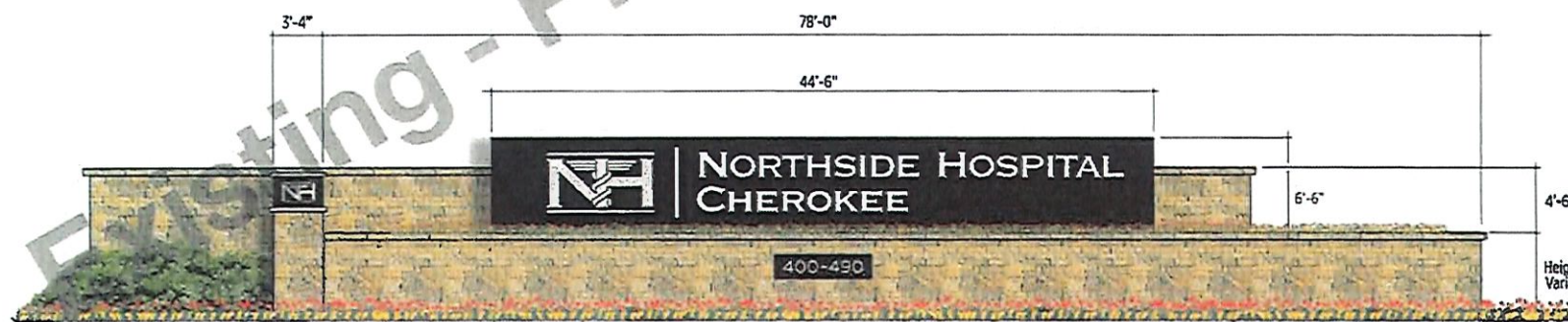
**2** Locations 2a/2b  
Campus Entrance  
Identification

2.2





**2a** | Flattened Elevation - Location 2a (South Side Of Entry Drive - Location 2b/North Side Of Entry Is Similar)  
Scale: 1/8" = 1'-0"



**2b** | Flattened Elevation - Location 2b (North Side Of Entry Drive - Location 2a/South Side Of Entry Is Similar)  
Scale: 1/8" = 1'-0"



**NH**  
**NORTHSIDE HOSPITAL**  
**CHEROKEE**

Site Graphics & Signage

12/24/2016	Issued For Review
19/Aug/2016	Issued To City of Canton
15/Sept/2016	Approved by City of Canton
04/Aug/2020	Proposed Amendment

**CARUSODRIVE** 678.770.7541  
121 Folsom St., Suite 400-101  
Marietta, Georgia 30090

Copyright 2020 by Caruso & Drive Design Group, Inc. All Rights Reserved. This Document & The Design, Materials And The Property Of Caruso & Drive Design Group, Inc. Is To Be Used Only For The Specific Project & Location. It Is Not To Be Used For Any Other Project. In Whole Or Part. Principal By Express Written Agreement With And Cooperation To Caruso & Drive Design Group, Inc.

**2** Locations 2a/2b  
Campus Entrance  
Identification

2.3





**NH**  
NORTHSIDE HOSPITAL  
CHEROKEE

Site Graphics & Signage

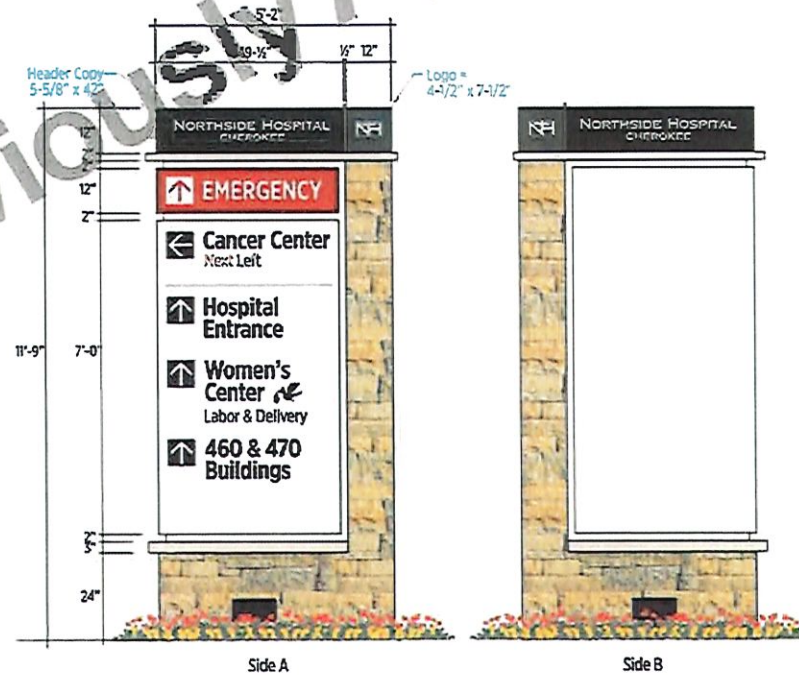
12 Aug 2016	Issued For Review
19 Aug 2016	Issued To City of Canton
15 Sept 2016	Approved by City of Canton
04 Aug 2020	Proposed Amendments

**CARUSODRYE** 815.770.754 (3030)  
518 Riverside Dr. Suite 400-BD Canton, GA 30108  
www.carusodrye.com

Copyright 2025 by Caruso & Drye Design Group, Inc.  
All Rights Reserved. The Design & Time Design Group, Inc. is the Property of Caruso & Drye Design Group, Inc. It is to be used only for the specific project and is not to be used for any other project without the prior written consent of Caruso & Drye Design Group, Inc.

**3** Location 3  
Directional Sign

3

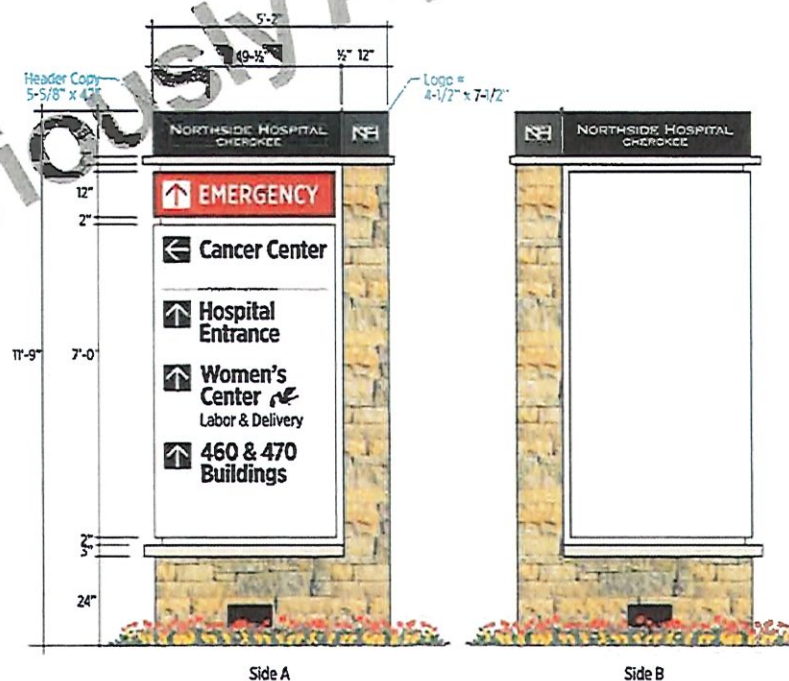






**NORTHSIDE HOSPITAL  
CHEROKEE**

Site Graphics & Signage



12/10/2015	Issued For Review
18/08/2016	Issued To City of Canton
11/09/2016	Approved By City of Canton
04/08/2025	Processed Amendments:

**CARUSODRIVE** 071 770 754 0000  
451 Riverway St. Suite 400-101 www.carusodrive.com  
Marietta, Georgia 30006

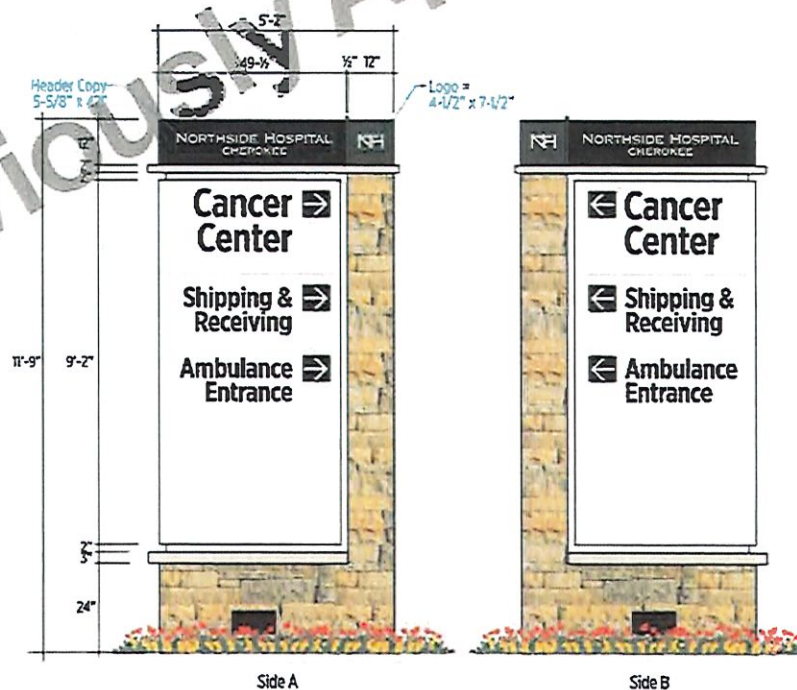
Copyright 2025 By Caruso & Day Design Group, Inc.  
All Rights Reserved. This Document & The Design  
Illustrated Here are the Property of Caruso & Day Design  
Group, Inc. It is To Be Used Only For The Specific  
Project Indicated Or Elsewhere To Which And Is Not To  
Be Used For Any Other Project In Whole Or Part  
Except By Written Agreement With And  
Consentation To Caruso & Day Design Group, Inc.

**4 Location 4  
Directional Sign**





Site Graphics & Signage



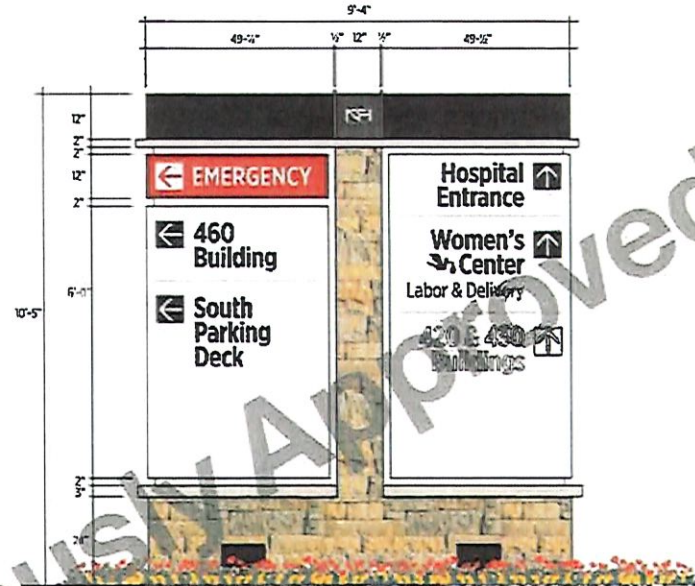
02/04/2019	Issued For Review
10/05/2019	Issued To City of Canton
15/09/2019	Approved By City of Canton
04/10/2020	Processed Amendments

**CARUSODRYE** 877.776.0010  
1510 Shreveport St., Suite 400-101, Marietta, Georgia 30060

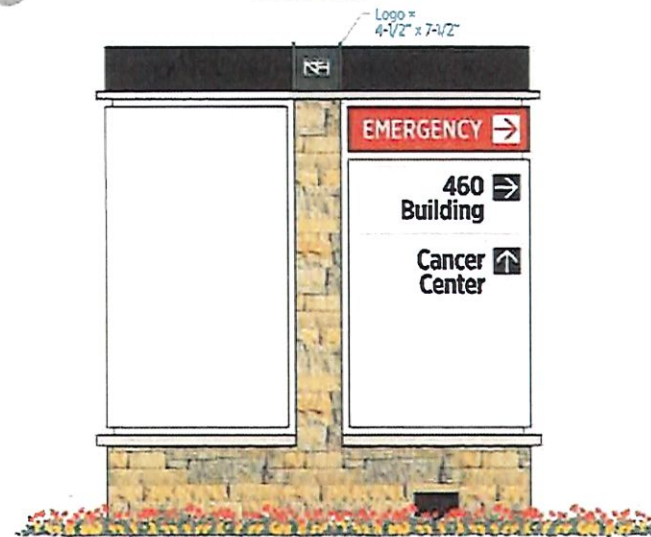
Copyright 2025 By Caruso & Drye Design Group, Inc. All Rights Reserved. This Document & The Designs It Contains Are The Property Of Caruso & Drye Design Group, Inc. It Is To Be Used Only For The Specific Project and Not Be Reproduced, Copied, or Used For Any Other Project Without The Written Consent Of Caruso & Drye Design Group, Inc.

**5** Location 5 Directional Sign





Elevation - Side A



Elevation - Side B



**NH**  
NORTHSIDE HOSPITAL  
CHEROKEE

Site Graphics & Signage

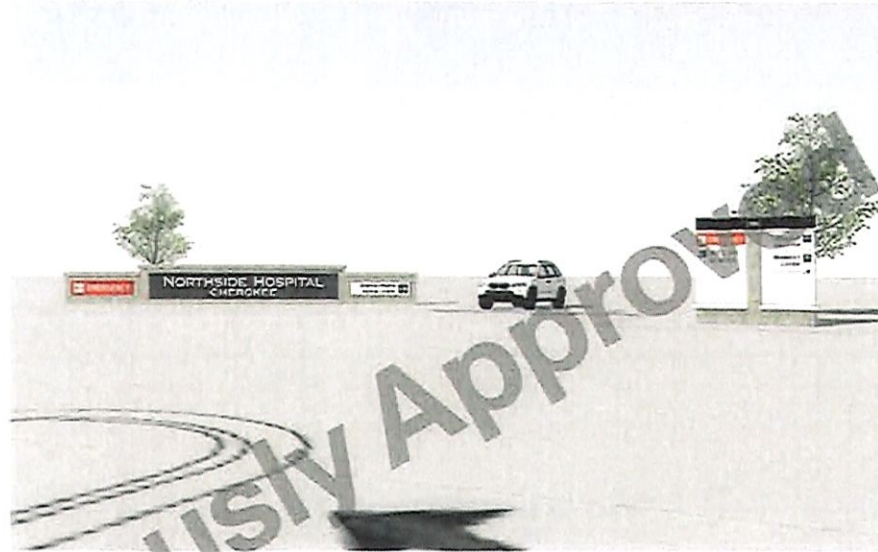
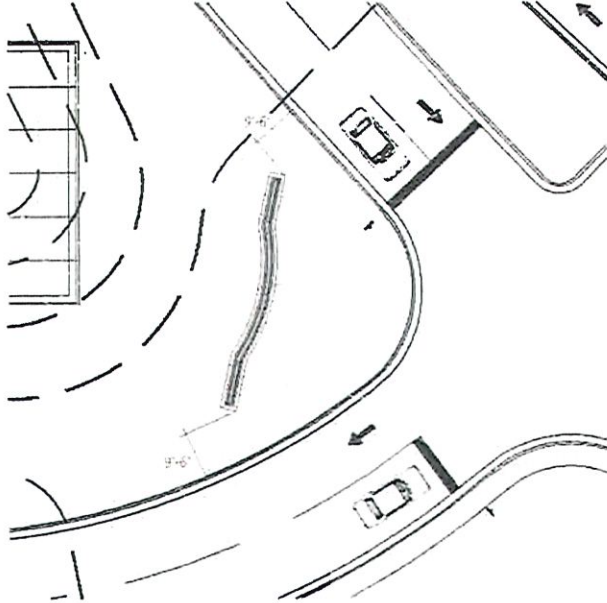
04Aug2016	Issued For Review
18Aug2016	Issued To City of Canton
15Sep2016	Approved by City of Canton
04Aug2023	Proposed Amendment

**CARUSODRIVE** 677.770.0360  
431 Powers Dr., Suite 200-101 www.carusodrive.com  
Marietta, Georgia 30060

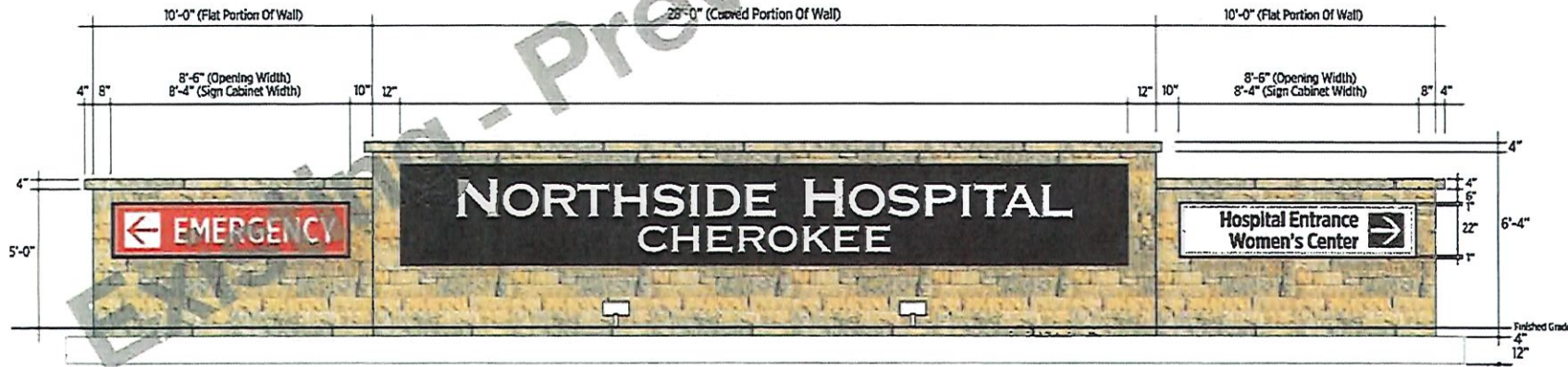
Copyright 2025 by Caruso & Drive Design Group Inc. All Rights Reserved. This Document & The Designs Illustrated Are The Property Of Caruso & Drive Design Group Inc. It Is To Be Used Only For The Specific Project Indicated Or Returned To Project And Is Not To Be Used For Any Other Project Without Written Agreement With And Compensation To Caruso & Drive Design Group Inc.

**6** Location 6  
Directional Sign





**NORTHSIDE HOSPITAL  
CHEROKEE**  
Site Graphics & Signage



**A** General Elevation  
Scale: 1/4" = 1'-0"

12Aug2016	Issued For Review
18Aug2016	Revised To City of Canton
15Sept2016	Approved By City of Canton
04Aug2025	Proposed Amendments

**CARUSODRYE** (770) 754-0050  
551 Riverchase Dr. Suite 400, Marietta, Georgia 30066  
www.carusodrye.com

Copyright 2025 By Caruso & Drye Design Group, Inc.  
All Rights Reserved. This document is the property of Caruso & Drye Design Group, Inc. It is to be used only for the specific project identified or referred to herein. Any use for other projects without written consent of Caruso & Drye Design Group, Inc. is prohibited.

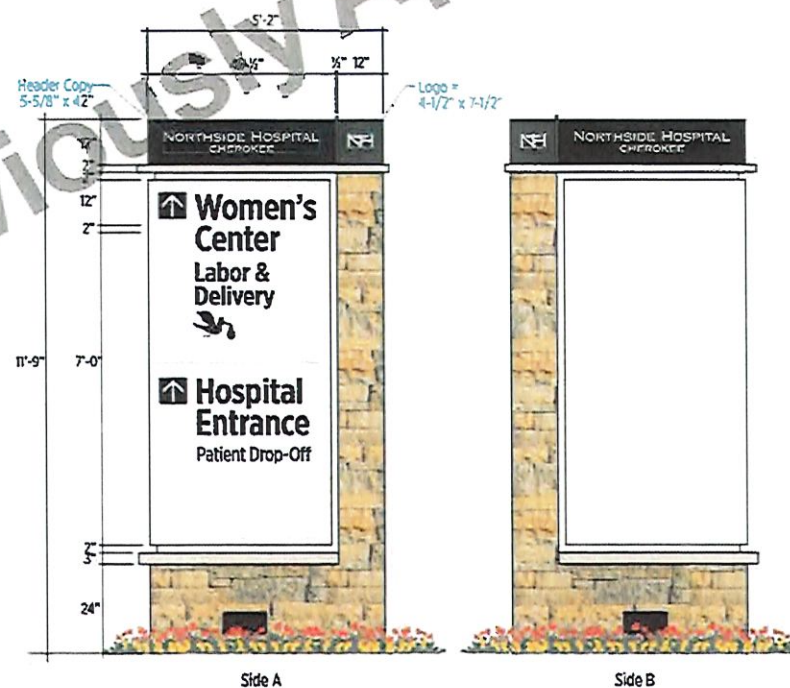
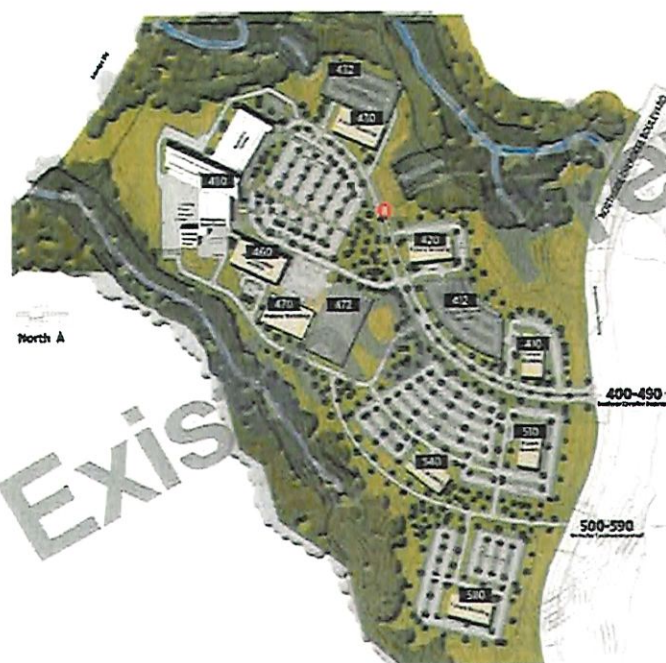
**7 Location 7  
Directional Sign**





**NH**  
NORTHSIDE HOSPITAL  
CHEROKEE

Site Graphics & Signage



DATE	ISSUED FOR REVIEW
18Aug2016	Issued To City of Canton
12Sep2016	Approved By City of Canton
04Aug2025	Proposed Amendment

**CARUSODRYE** (P: 770 794 0300)  
539 Riverwood Dr. Suite 400-100 www.carusodrye.com  
Marietta, Georgia 30066

Copyright 2025 by Caruso & Drye Design Group, Inc.  
All Rights Reserved. This Document & The Designs  
Published Are The Property Of Caruso & Drye Design  
Group, Inc. It Is To Be Used Only For The Specific  
Project Identified Or Referred To In It And Is Not To  
Be Used For Any Other Project In Whole Or Part  
Without Express Written Agreement With And  
Compensation To Caruso & Drye Design Group, Inc.

**8** Location 8  
Directional Sign





**NH**  
NORTHSIDE HOSPITAL  
CHEROKEE

Site Graphics & Signage

12Aug2016	Issued For Review
19Aug2016	Issued To City of Canton
15Sep2016	Approved by City of Canton
04Aug2023	Processed Amendments

**CARUSODRYE** 978.770.7540 03610  
131 Riverside St. Suite 200-101 Canton, MA 01864  
March 1, Georgia 30009

Copyright © 2016 by Caruso & Drye Design Group, Inc.  
All Rights Reserved. This Document is the Design  
Product and is the Property of Caruso & Drye Design  
Group, Inc. It is to be used only for the specific  
Project described on the title sheet and is not to  
be used for any other Project. In Witness Whereof,  
Caruso & Drye Design Group, Inc. has hereunto  
set its hand and seal this 1st day of March 2016.

**9** Location 9  
Parking Entry  
Identifier

9





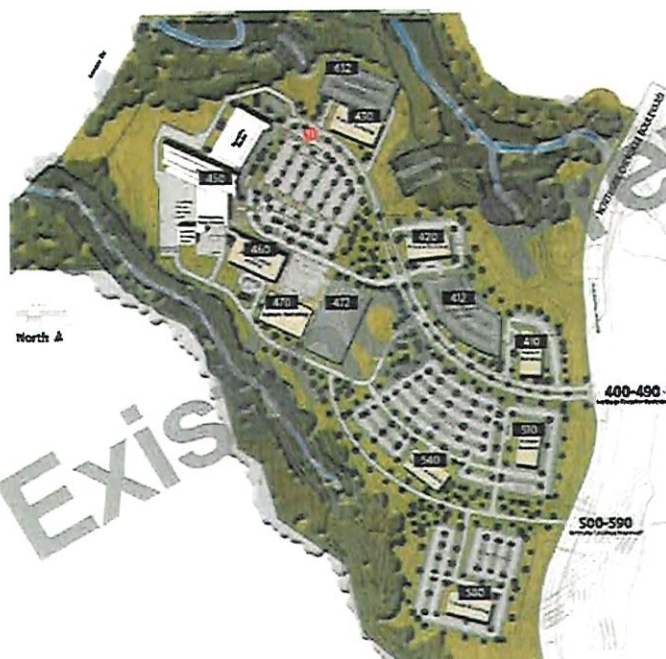






**NORTHSIDE HOSPITAL  
CHEROKEE**

Site Graphics & Signage



12Aug2016	Issued For Review
18Aug2016	Issued To City of Canton
15Sept2016	Approved By City of Canton
04Aug2025	Proposed Amendments

**CARUSODRIVE** (977) 754-0350  
431 Powers Dr., Suite 400-101  
Marietta, Georgia 30066

Copyright ©2016 by Caruso Drive Design Group, Inc. All Rights Reserved. This Document & Its Design, Invention and/or the Property of Caruso Drive Design Group, Inc. It is To Be Used Only For The Specific Project Indicated On The Drawing. To Be Used For Any Other Project, In Whole Or Part, Without The Express Written Permission, Written And Verbal, From Caruso Drive Design Group, Inc.

**11** Location 11  
Parking Entry  
Identifier





Elevation - Side A



Elevation - Side B



**NH**  
NORTHSIDE HOSPITAL  
CHEROKEE

Site Graphics & Signage

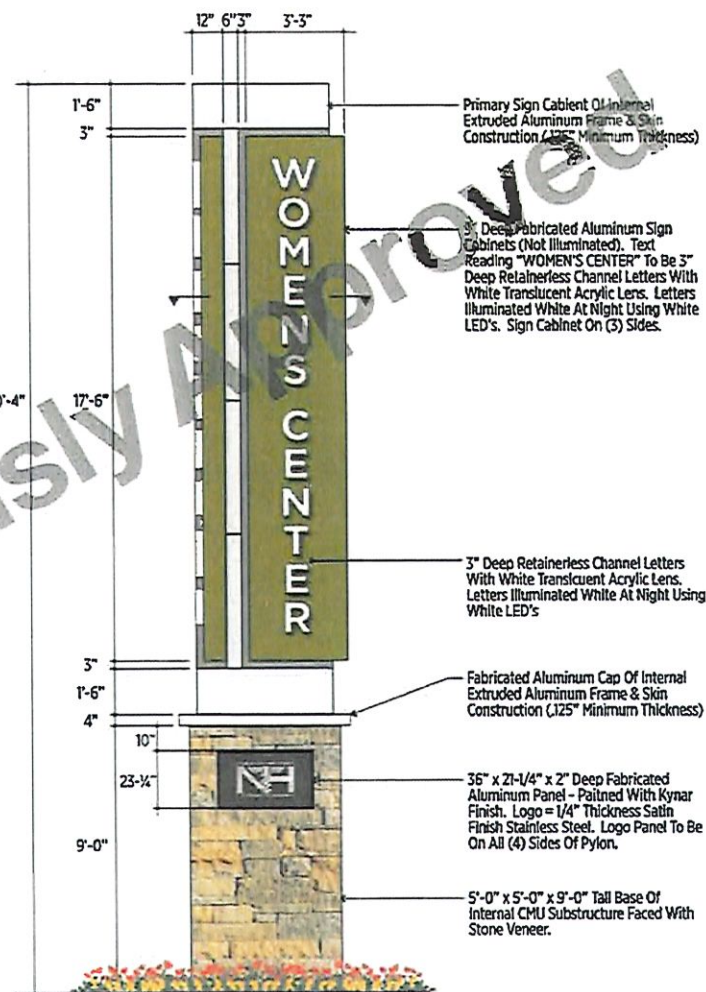
12Aug2016	Issued For Review
18Aug2016	Revised To City of Canton
16Sep2016	Approved By City of Canton
04Aug2025	Proposed Amendments

**CARUSODRYE** (913) 770-7544  
4311 Rosemead Dr., Suite 300-100, Overland Park, KS 66211  
www.carusodrye.com

Copyright 2025 by Caruso & Drye Design Group, Inc. All Rights Reserved. This Document & the Design, Materials and the Property of Caruso & Drye Design Group, Inc. It is to be used only for the specific project and is not to be used for any other project. In whole or part. Any use for any other project without written consent and permission to Caruso & Drye Design Group, Inc.

**12** Location 12  
Directional Sign





**NORTHSIDE HOSPITAL  
CHEROKEE**

Site Graphics & Signage

12Aug2016	Issued For Review
18Aug2016	Issued To City of Canton
15Sep2016	Approved by City of Canton
14Oct2016	Processed Amendments

**CARUSODRYE** 678 770 784 0000  
531 Riverchase Dr. Suite 400-100 www.carusodrye.com  
Atlanta, Georgia 30328

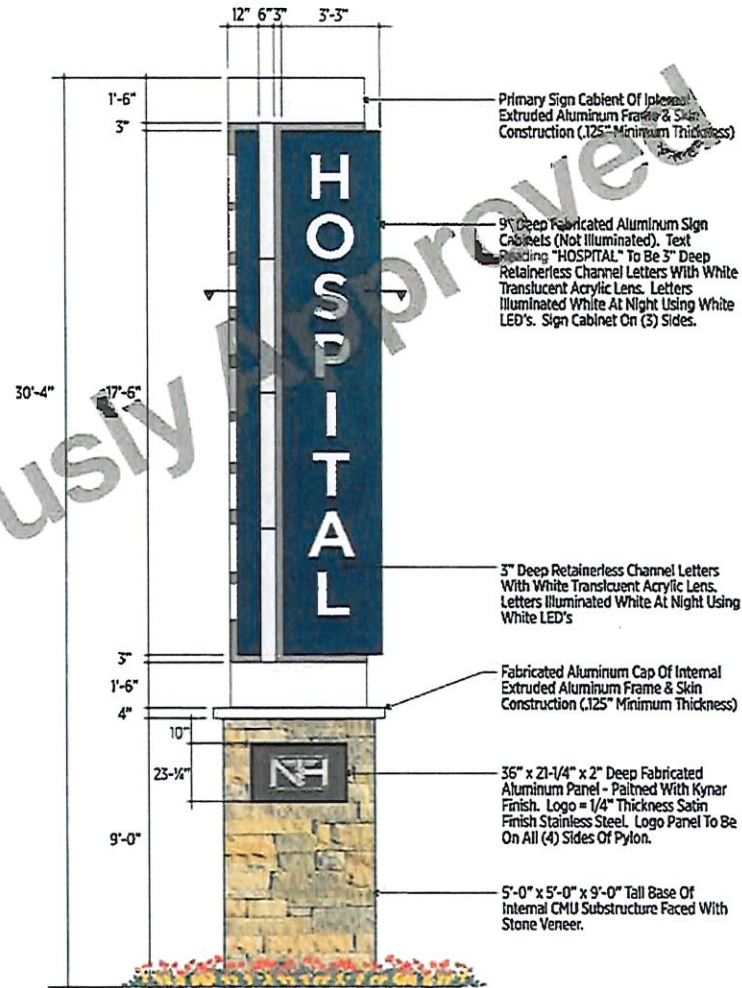
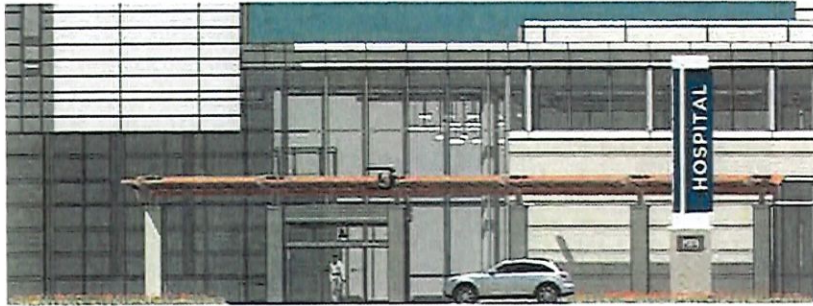
Copyright 2016 by Caruso & Drye Design Group, Inc. All Rights Reserved. This Document & The Design, Material And The Property Of Caruso & Drye Design Group, Inc. It Is To Be Used Only For The Specific Project Identified On Referred To herein And Is Not To Be Used For Any Other Project. In Whole Or Part. Except By Written Agreement With And Compensation To Caruso & Drye Design Group, Inc.

**A** Typical Elevations With Graphics Cabinet x 3 Sides  
Scale: 1/4" = 1'-0"

**13** Location 13  
Women's Center  
Entry Identifier

13





**NH**  
NORTHSIDE HOSPITAL  
CHEROKEE

Site Graphics & Signage

12 Aug 2016	Issued For Review
18 Aug 2016	Issued To City of Canton
15 Sep 2016	Approved by City of Canton
04 Aug 2025	Proposed Amendments

**CARUSODRYE** 077.770.7541 0200  
4317 Powers Ferry Dr. Suite 400-101 Marietta, Georgia 30066

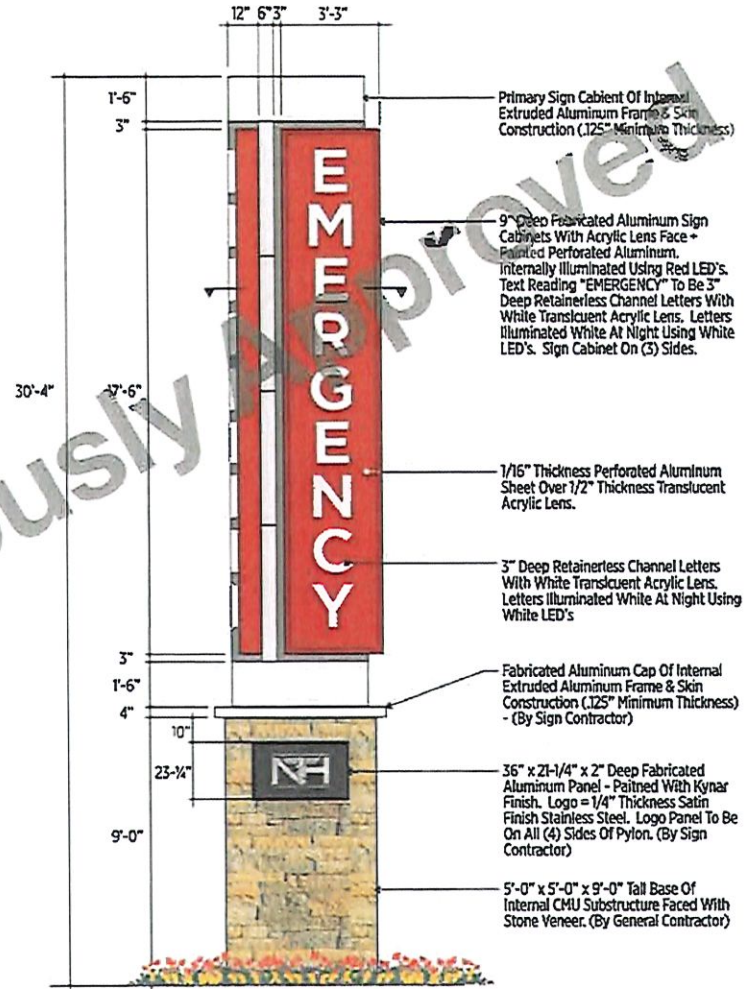
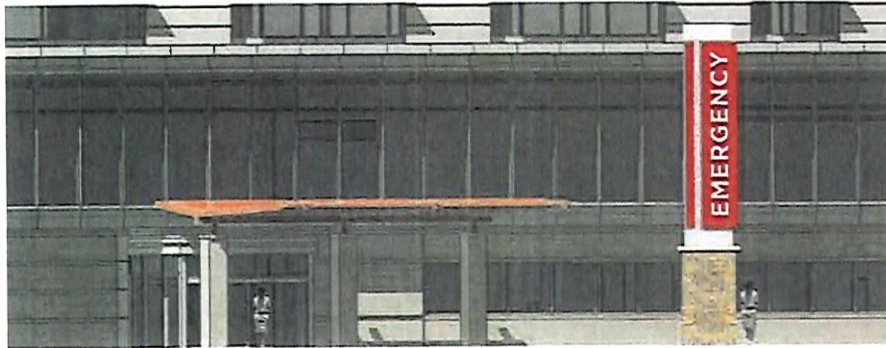
Copyright 2025 By Caruso & Drye Design Group, Inc. All Rights Reserved. This Document & The Design, Invention And The Property Of Caruso & Drye Design Group, Inc. It Is Not To Be Used For Any Other Project Without The Written Consent Of Caruso & Drye Design Group, Inc. It Is Not To Be Used For Any Other Project Without The Written Consent Of Caruso & Drye Design Group, Inc.

**A** Typical Elevations With Graphics Cabinet x 3 Sides  
Scale: 1/4" = 1'-0"

**14** Location 14  
Hospital Entry  
Identifier

14





# **NH** NORTHSIDE HOSPITAL CHEROKEE Site Graphics & Signage

12Aug2016	Issued For Review
18Aug2016	Issued To City of Canton
15Sept2016	Approved By City of Canton
04Aug2025	Processed Amendments

**CARUSODRIVE** (770) 754-0200  
428 Peachtree St. Suite 400-1011 www.carusodrive.com  
Marietta, Georgia 30090

Copyright 2025 By Caruso & Drive Design Group Inc. All Rights Reserved. "The Invention" & "The Design" illustrated are the property of Caruso & Drive Design Group Inc. It is to be used only for the specific project and/or design. To be used in any other project in whole or in part, without the express written agreement with and permission to Caruso & Drive Design Group Inc.

**15** Location 15  
Emergency Identifier

15

**A** Typical Elevations With Graphics Cabinet x 3 Sides  
Scale: 1/4" = 1'-0"





**NH**  
NORTHSIDE HOSPITAL  
CHEROKEE

Site Graphics & Signage

12Aug2016	Issued For Review
18Aug2016	Issued To City of Canton
12Sept2016	Approved By City of Canton
04Aug2025	Proposed Amendments

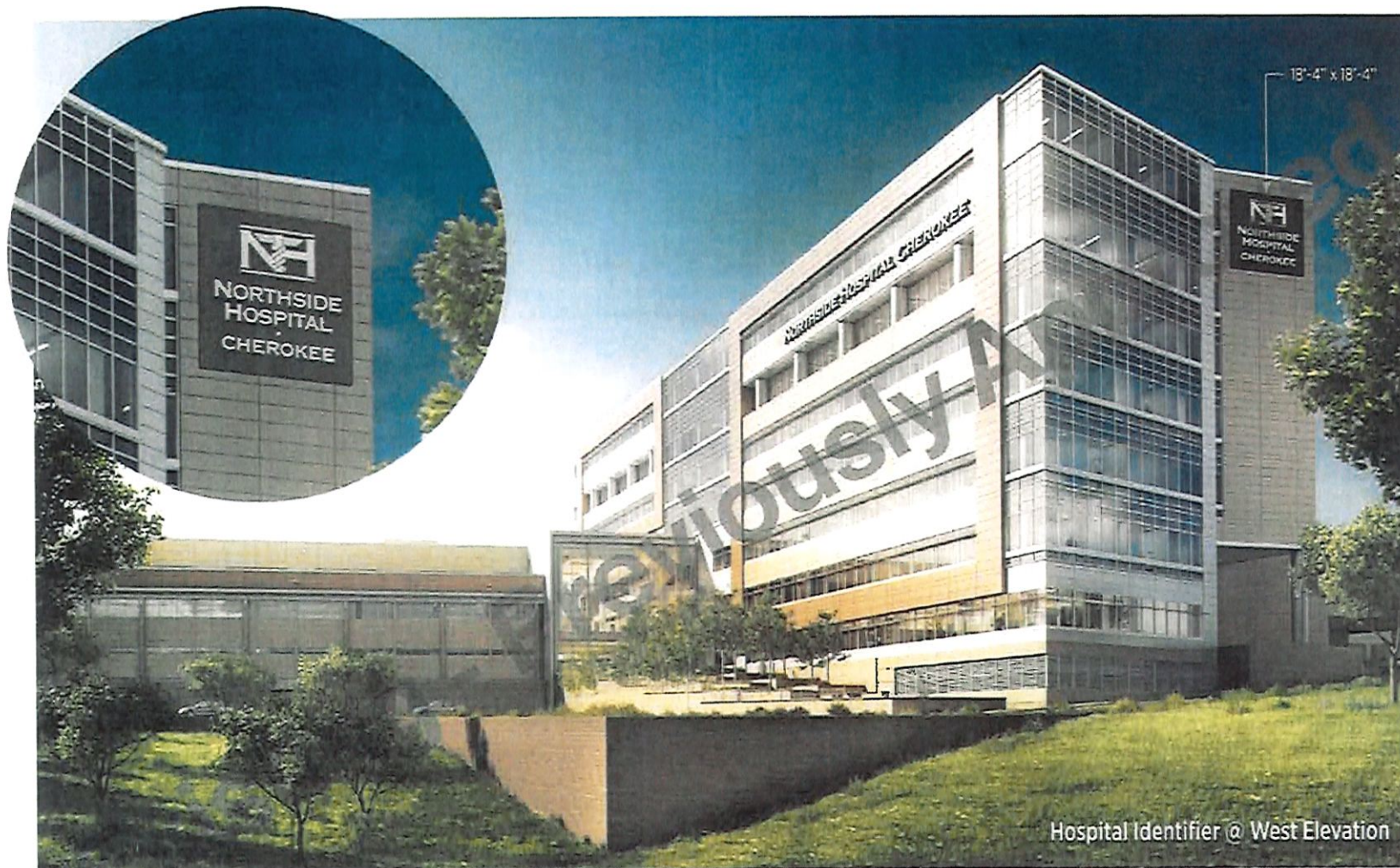
**CARUSODRYE** (770) 754-0560  
578 Roswell Dr. Suite 400-1111 www.carusodrye.com  
Marietta, Georgia 30067

Copyright 2025 By Caruso & Drye Design Group, Inc.  
All Rights Reserved. This Document & The Contents  
Hereof Are The Property Of Caruso & Drye Design  
Group, Inc. It Is To Be Used Only For The Specific  
Project Identified Or Referred To In These Plans And Is Not To  
Be Used For Any Other Project. In Whole Or Part.  
Transferred By Express Written Agreement With And  
Consentation To Caruso & Drye Design Group, Inc.

**16** Location 16  
Hospital Identifier  
East Elevation

16





Hospital Identifier @ West Elevation



**NH**  
NORTHSIDE HOSPITAL  
CHEROKEE

Site Graphics & Signage

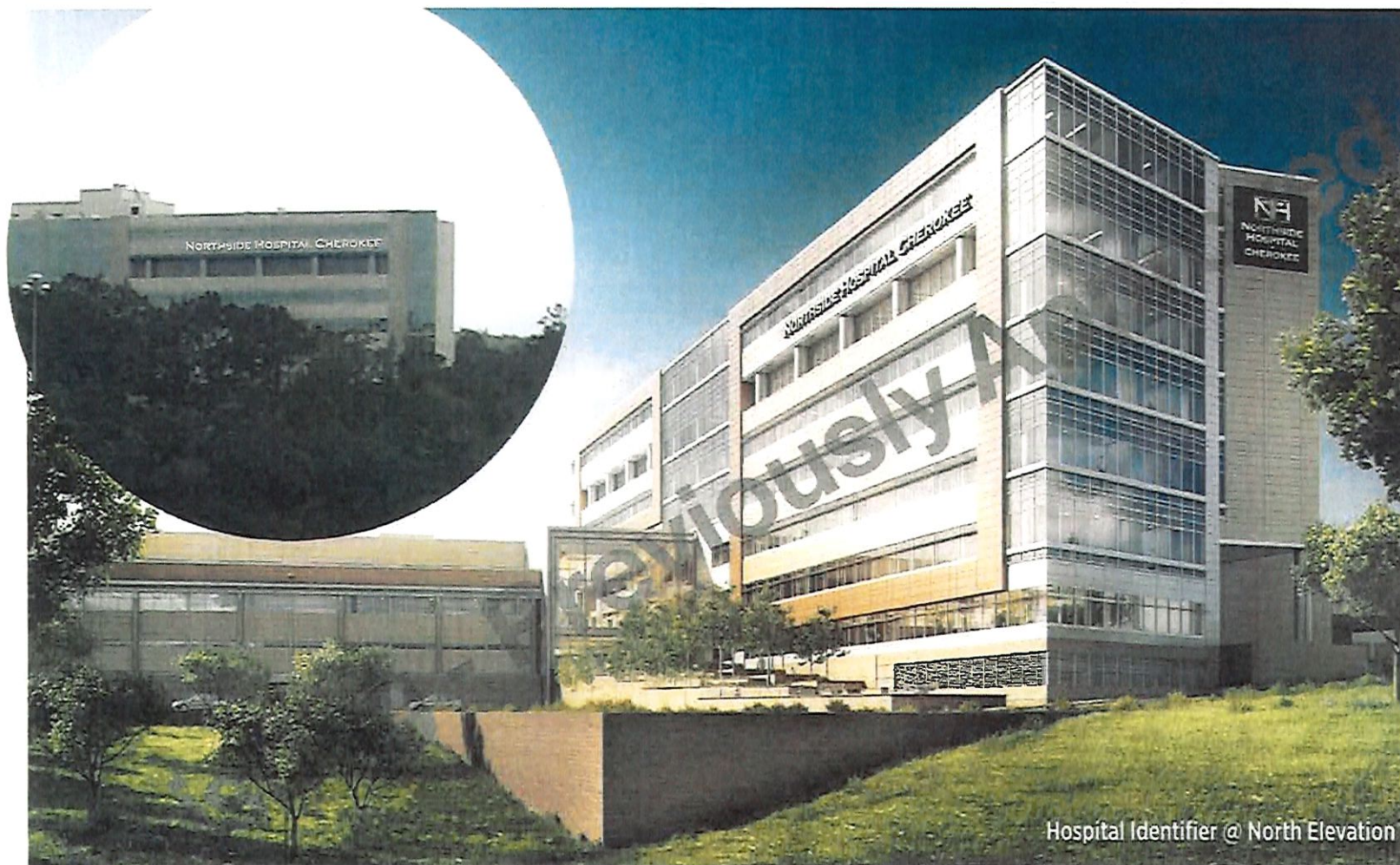
12/11/2016	Issued For Review
1/14/2017	Issued To City of Canton
10/26/2016	Approved by City of Canton
04/16/2016	Processed Amendments

**CARUSODRYE** 678.770.7541 0360  
528 Reynolds St., Suite 400-101 www.carusodrye.com  
Marietta, Georgia 30060

Copyright 2016 by Caruso & Drye Design Group, Inc. All Rights Reserved. The Document and The Design Illustrated Are The Property Of Caruso & Drye Design Group, Inc. It Is To Be Used Only For The Specific Project and Not To Be Reproduced, Copied, or Used for Any Other Project. In Whole Or Part. Except By Express Written Agreement With And Compensation To Caruso & Drye Design Group, Inc.

**17** Location 17  
Hospital Identifier  
West Elevation





Hospital Identifier @ North Elevation



**NH**  
NORTHSIDE HOSPITAL  
CHEROKEE

Site Graphics & Signage

12 Aug 2016	Issued For Review
18 Aug 2016	Issued To City of Canton
13 Sep 2016	Approved by City of Canton
04 Aug 2023	Processed Amendments

**CARUSODRYE** 877 770 2541 0360  
1315 Riverside Dr. Suite 400-110 www.carusodrye.com  
Marietta, Georgia 30060

Copyright 2025 By Caruso & Drye Design Group, Inc.  
All Rights Reserved. This Document & The Designs  
Illustrated Are The Property Of Caruso & Drye Design  
Group, Inc. It Is To Be Used Only For The Specific  
Project Indicated Or Related To The Project And Is Not To  
Be Used For Any Other Project. In Witness Whereof,  
Signed By Caruso & Drye Design Group, Inc.  
Competition To Caruso & Drye Design Group, Inc.

**18** Location 18  
Hospital Identifier  
North Elevation

18



If Hospital is Expanded Vertically, The Illustrated Sign Shall Be Relocated To A Position Higher On The Building.

**NORTHSIDE HOSPITAL CHEROKEE**

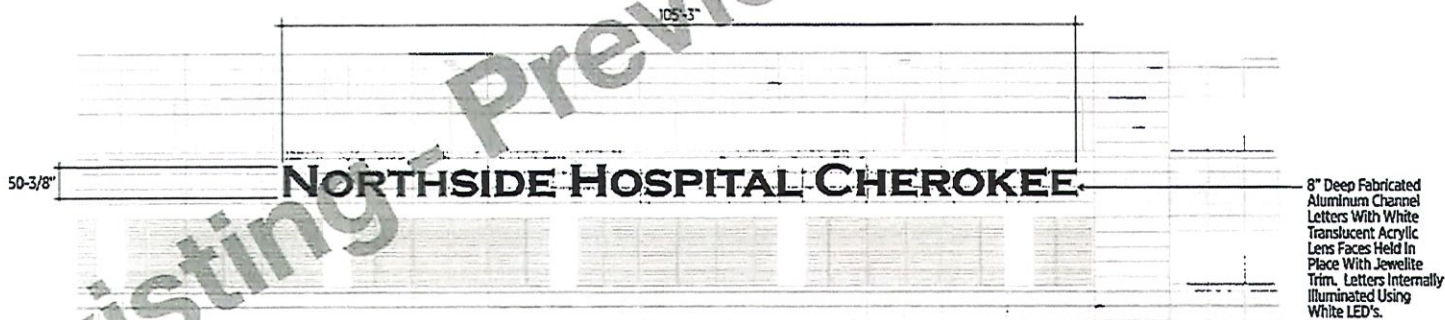


**NORTHSIDE HOSPITAL  
CHEROKEE**

Site Graphics & Signage

## A Overall North Hospital Elevation

Scale: 1/32" = 1'-0"



12Aug2016	Issued For Review
18Aug2016	Issued To City of Canton
10Sept2016	Approved by City of Canton
04Aug2022	Proposed Amendments

**CARUSODRYE** (913) 770-7948 0000  
4701 Renaissance Dr. Suite 400-101 www.carusodrye.com  
Meriden, Georgia 30090

Copyright 2022 by Caruso & Drye Design Group, Inc. All Rights Reserved. This Document & The Designs Illustrated Are The Property Of Caruso & Drye Design Group, Inc. It Is To Be Used Only For The Specific Project Identified On Release To Person And Is Not To Be Used For Any Other Project. In Whole Or Part. Except Per Express Written Agreement With And Consent On To Caruso & Drye Design Group, Inc.

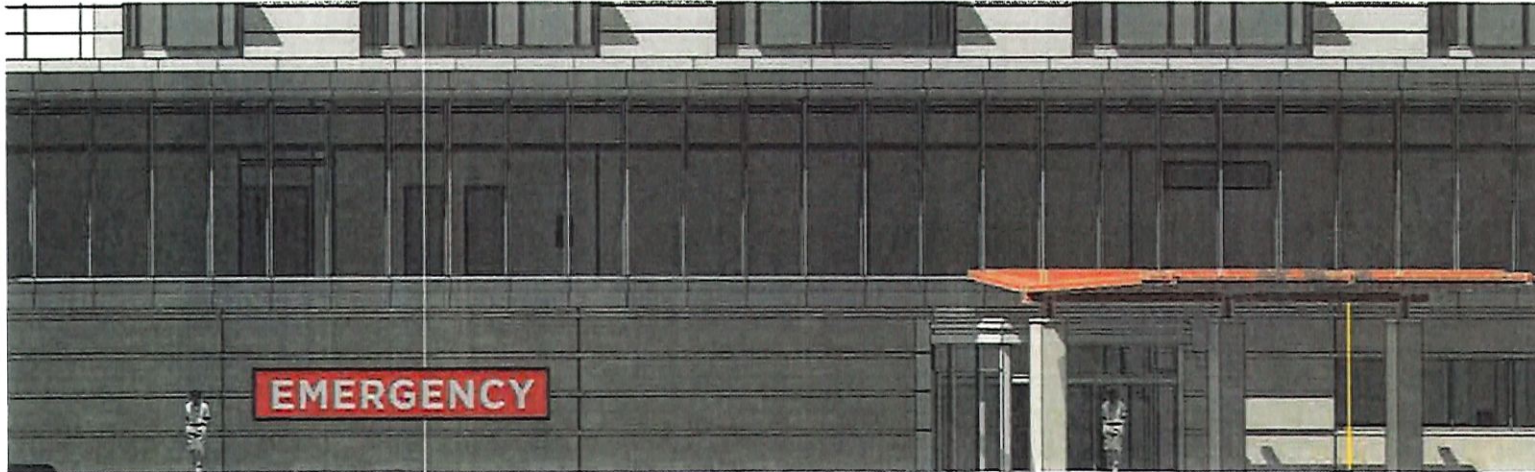
## B Partial North Elevation

Scale: 1/16" = 1'-0"

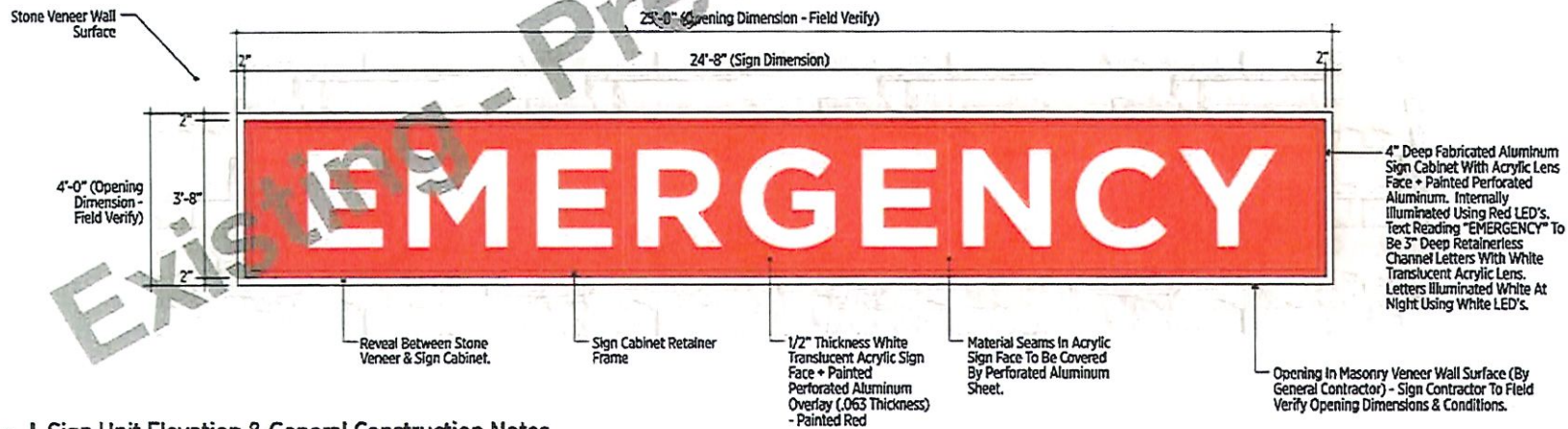
**18** Location 18  
Hospital Identifier  
North Elevation

18.1





**NORTHSIDE HOSPITAL  
CHEROKEE**  
Site Graphics & Signage



**A | Sign Unit Elevation & General Construction Notes**  
Scale: 3/8" = 1'-0"

12AUG2016	Issued For Review
19AUG2016	Revised To City of Canton
15SEP2019	Approved by City of Canton
04AUG2020	Proposed Amendments

**CARUSODRYE** 371.770.7541  
510 Riverchase Dr. Suite 400, Atlanta, Georgia 30328  
www.carusodrye.com

Copyright 2025 by Caruso & Drye Design Group, Inc. All Rights Reserved. This Document & The Designs, Inventions, and/or Ideas are the Property of Caruso & Drye Design Group, Inc. It is to be used only for the specific project and location. No part of this document may be reproduced or transmitted in any form or by any means, electronic, mechanical, photocopying, recording, or by any information storage and retrieval system, without prior written permission from Caruso & Drye Design Group, Inc.

**19** Location 19  
Inset Wall Sign @  
Emergency Entry





**NH**  
NORTHSIDE HOSPITAL  
CHEROKEE

Site Graphics & Signage

11 Aug 2018	Submitted For Review
18 Aug 2018	Revised To City of Canton
15 Sep 2018	Approved By City of Canton
04 Aug 2025	Processed Amendments

**CARUSODRYE** (P) 770.754.0500  
4511 Riverwood Dr., Suite 400-1111  
Marietta, Georgia 30067

Copyright 2025 by Caruso & Drye Design Group, Inc.  
All Rights Reserved. This Document & The Designs  
Illustrated Are The Property Of Caruso & Drye Design  
Group, Inc. It Is To Be Used Only For The Specific  
Project Identified On Related To Plans And Is Not To  
Be Used For Any Other Project Without Or Full  
Written Consent From Caruso & Drye Design Group, Inc.

**20** Location 20  
Parking Entry  
Identifier

20

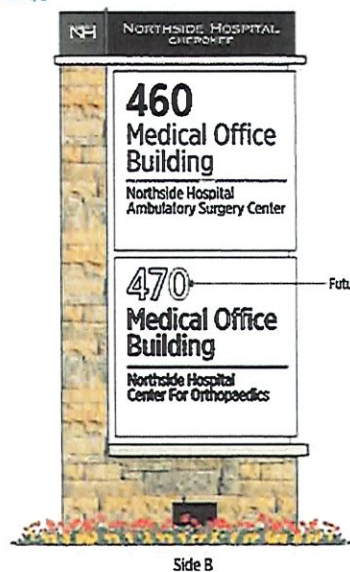
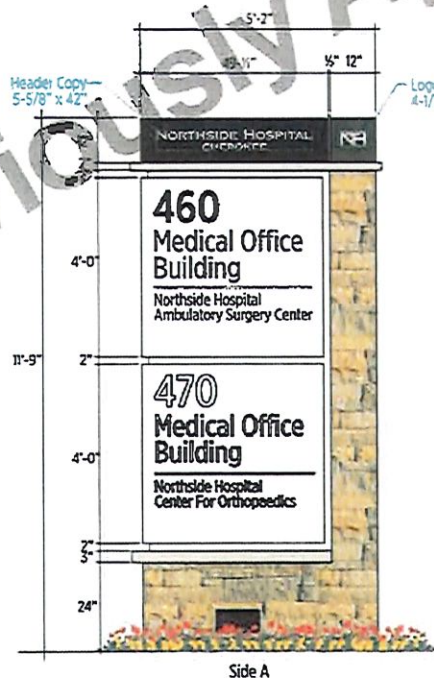






**NH**  
NORTHSIDE HOSPITAL  
CHEROKEE

Site Graphics & Signage



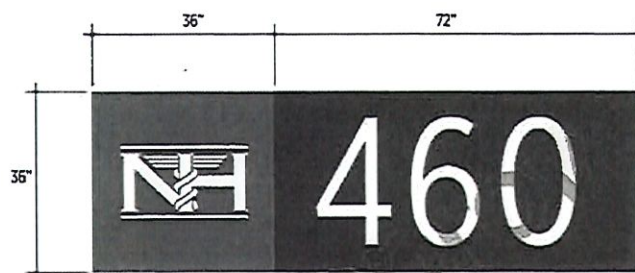
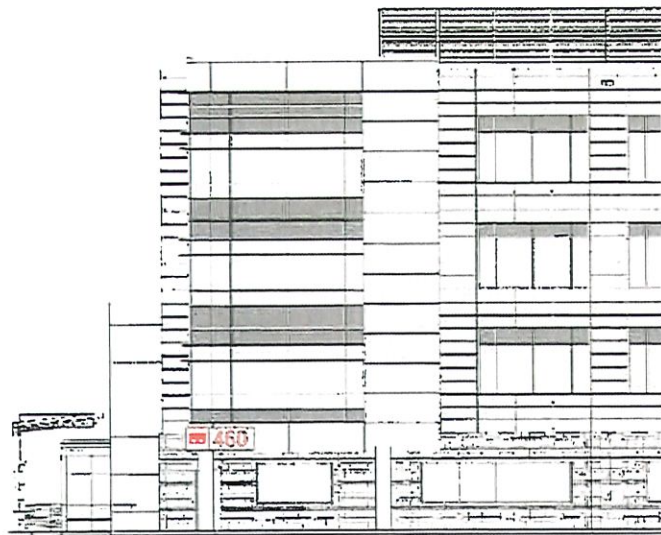
12 Aug 2015	Issued For Review
18 Aug 2015	Issued To City of Canton
15 Sept 2015	Approved By City of Canton
14 Aug 2016	Processed Amendments

**CARUSODRYE** 404.770.7541 0360  
631 Powers Dr. Suite 400-101 www.carusodrye.com  
Marietta, Georgia 30066

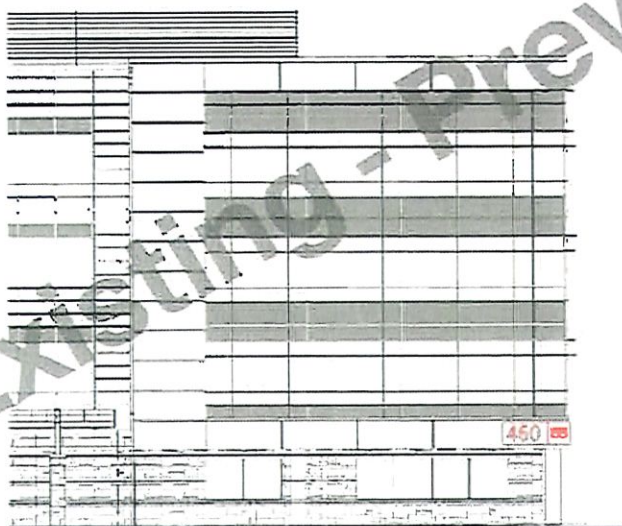
Copyright © 2015 by Caruso & Drye Design Group, Inc.  
All Rights Reserved. This document is the property of Caruso & Drye Design Group, Inc. It is to be used only for the specific project identified or related to the project and is not to be used for any other project. In whole or in part. Please do not reproduce without permission from Caruso & Drye Design Group, Inc.

**21** Location 21  
Medical Office  
Building Identifier





**A** Partial North Elevation  
Scale: 1/16" = 1'-0"



**B** East Elevation  
Scale: 1/16" = 1'-0"



**NH**  
NORTHSIDE HOSPITAL  
CHEROKEE

Site Graphics & Signage

12/11/2016	Issued For Review
18/08/2018	Revised To City of Canton
10/09/2018	Approved By City of Canton
04/08/2020	Proposed Amendments

**CARUSODRYE** (913) 770-7542 (0000)  
531 Rosemary Dr., Suite 200-101 www.carusodrye.com  
Meriden, Georgia 30001

Copyright 2025 by Caruso & Drye Design Group, Inc.  
All Rights Reserved. This Document is the Property of Caruso & Drye Design Group, Inc. It is to be Used Only for the Specific Project Identified On the Project Information Sheet and To Be Used for Any Other Project Without the Prior Written Consent of Caruso & Drye Design Group, Inc.

**22** Location 22  
Medical Office  
Building Address #

22









**NH**  
NORTHSIDE HOSPITAL  
CHEROKEE

Site Graphics & Signage

12Aug2016	Submitted For Review
16Aug2016	Reviewed To City of Canton
15Sep2016	Approved by City of Canton
04Aug2025	Proposed Amendments

**CARUSODRYE** 678.770.7544 0360  
1431 Rossmore Dr., Suite 200-101  
Marietta, Georgia 30067

Copyright © 2016 by Caruso & Drye Design Group, Inc.  
All Rights Reserved. This Document & The Design  
Illustrated Are The Property Of Caruso & Drye Design  
Group, Inc. It Is To Be Used Only For The Specific  
Project Identified Or Referred To Herein And Is Not To  
Be Used For Any Other Project, In Whole Or Part  
Without The Express Written Consent And  
Compensation To Caruso & Drye Design Group, Inc.

**24** Location 24  
Directional Sign

24







**NH**  
NORTHSIDE HOSPITAL  
CHEROKEE

Site Graphics & Signage

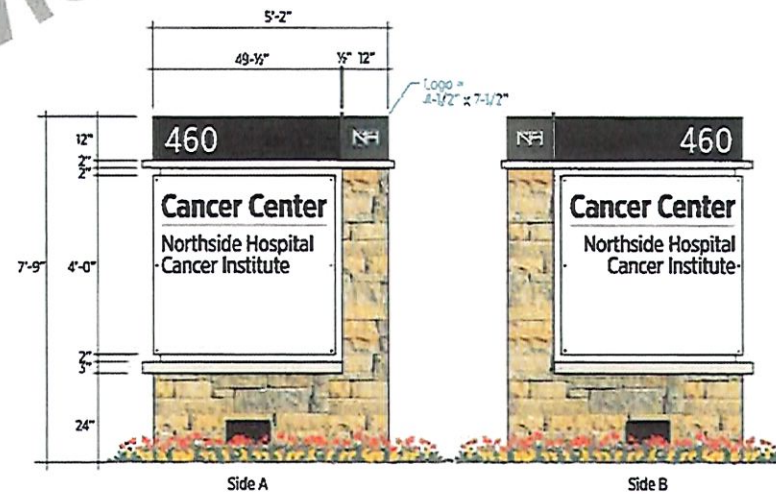
12/01/2016	Issued For Review
12/01/2016	Issued To City of Canton
12/01/2016	Approved by City of Canton
04/08/2023	Processed Amendments

**CARUSODRIVE** (770) 754-0240  
531 Riverchase Dr., Suite 400-101  
Marietta, Georgia 30067

Copyright 2016 By Caruso & Drive Design Group, Inc.  
All Rights Reserved. This Document & The Designs  
Illustrated Here Are Intended For Caruso & Drive Design  
Group, Inc. It Is To Be Used Only For The Specific  
Project Identified On Permitted To Be Used And Is Not To  
Be Used For Any Other Project. In Witness Whereof  
I, the undersigned, have hereunto set my hand and  
affixed my official seal this 1st day of August, 2016.  
Caruso & Drive Design Group, Inc.

**25** Location 25  
Directional Sign

25







**NORTHSIDE HOSPITAL  
CHEROKEE**

Site Graphics & Signage

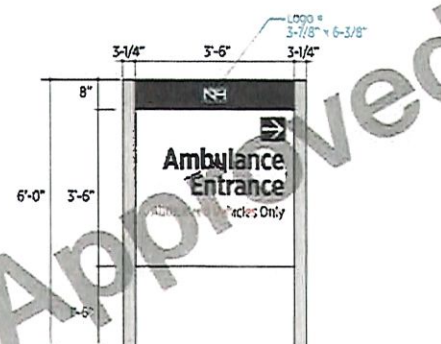
12Aug2018	Issued For Review
18Aug2018	Revised To City of Canton
10Sep2018	Approved by City of Canton
04Aug2025	Processed Amendments

**CARUSODRYE** 678.770.7561 1060  
531 Lawrence St., Suite 400-101 Marietta, Georgia 30060

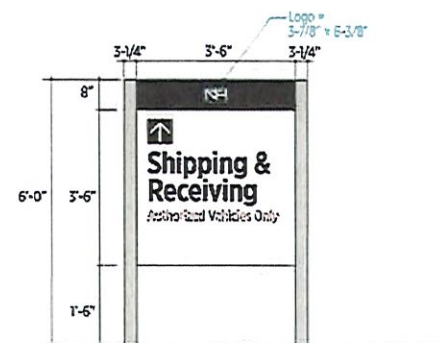
Copyright 2025 By Caruso & Drye Design Group Inc.  
All Rights Reserved. This Document & The Designs  
It Contains Are The Property Of Caruso & Drye Design  
Group Inc. It Is To Be Used Only For The Specific  
Project Identified Or Referred To Herein And Is Not To  
Be Used For Any Other Project. In Witness Whereof,  
For and By Caruso & Drye Design Group Inc.  
Caruso & Drye Design Group Inc.

**26 27** Locations 26 & 27  
Directional Signs

26 / 27

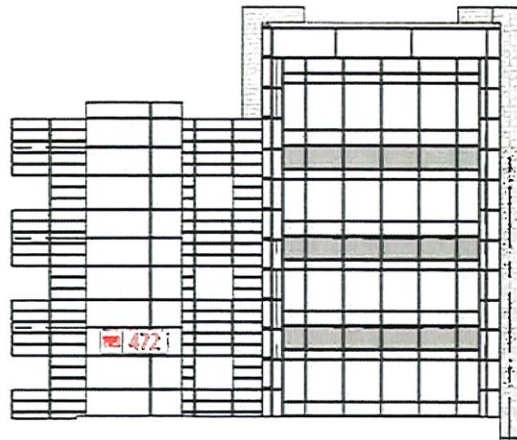


26

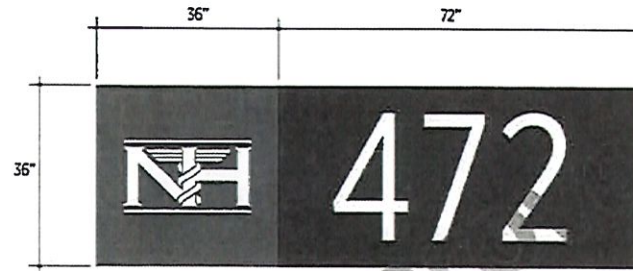


27





**A** Partial North Elevation  
Scale: 1/16" = 1'-0"



**B** Graphic Details  
Scale: 1/2" = 1'-0"



**NH**  
NORTHSIDE HOSPITAL  
CHEROKEE

Site Graphics & Signage



12/24/2016	Issued For Review
18/08/2018	Issued To City of Dalton
12/08/2018	Approved by City of Dalton
04/08/2020	Finalized Amendments

**CARUSODRYE** 975.770.1544  
531 Riverside Dr., Suite 400-101 Dalton, GA 30701  
Merrett Group 20090

Copyright 2021 by Caruso & Drye Design Group, Inc. All Rights Reserved. This Document & The Design Submitted Are The Property Of Caruso & Drye Design Group, Inc. It Is To Be Used Only For The Specific Project Indicated On Request To Project And Is Not To Be Used For Any Other Project. In Whole Or Part. Without The Written Consent Of Caruso & Drye Design Group, Inc.

**28** Location 28  
Parking Deck  
Address Marker

28