



---

# HISTORIC PRESERVATION COMMISSION MEETING REPORT

---

FROM: Community Development Department  
BY: Jakob Allen, City Planner  
SUBJECT: **COA2603-XXX – Design Request for Proposed Master Signage Plan**  
DATE: 03/23/2026

---

## RECOMMENDATION

Historic Preservation Commission to consider the Applicant's design request for a proposed master signage plan for the District on the Etowah multi-family development located at 215 Reformation Parkway as submitted and guided by the City of Canton's Historic District Design Guidelines.

## DISCUSSION

The Applicant is proposing a master signage plan for the District on the Etowah. As a property zoned PD-MU (Planned Development – Mixed Use), it is eligible for the creation and possible approval of a master signage plan.

The first proposed sign is a 3-foot by 12-foot illuminated blade sign with a 6.93-square-foot copy area installed between the third and fourth floors of the southeast corner of Building 1000. The second proposed sign is a 21-foot by 3.5-foot illuminated wall sign with a 73.3-square-foot copy area mounted on an existing concrete wall near the entrance to Building 2000. Finally, there are two proposed 5-foot by 5-foot non-illuminated address signs with a 19-square-foot copy area apiece installed on the western elevations of Buildings 1000 and 2000 – one per structure.

Please note that this proposed master signage plan is a possible action item on the agenda for the April 2, 2026, City Council meeting. If approved, staff recommends a condition allowing the Historic Preservation Commission to amend the master signage plan prior to the issuance of a Certificate of Appropriateness.

For additional information, please see the attached application.

## RELEVANT HISTORIC GUIDELINES AND STANDARDS

The following standards ought to be considered when reviewing this project to ensure it follows the City of Canton's Historic District Design Guidelines.

Phone: 770.704.1500 | Fax: 770.704.1538 | 110 Academy Street | Canton, Georgia 30114

Upon approval, a master signage plan shall supersede any conflicting resolutions and regulations for the property to which it pertains.

ATTACHMENTS – COA2603-XXX Application



RESIDENTIAL  
GROUP

City of Canton  
Community Development Department  
110 Academy Street  
Canton, GA 30114

DATE: February 6, 2026

**RE: Letter of Intent  
Master Sign Plan – District on the Etowah**

To Whom it May Concern:

The Residential Group is currently under construction with the District on the Etowah project, located within the Canton Mills Master Plan. The overall development encompasses approximately 33.13 acres of mixed-use space in downtown Canton, situated between Railroad Street and the Etowah River. Our specific project is a 280-unit, multi-family residential community located along the Etowah River, across the railroad tracks. This development is intended to support the vision of a true “Live, Work, and Play” environment within downtown Canton.

One of the primary challenges facing our community is its location within the broader Canton Mills project. The site is landlocked on private property and is not adjacent to any public rights-of-way. Additionally, the property lies within the Etowah River floodplain. To address this condition, the finished floor elevation of the community was constructed above the 500-year flood elevation, requiring significant imported fill. As a result, the site was raised approximately 8 to 12 feet above the existing grade of Reformation Parkway. Furthermore, the multi-family parcel encompasses just over three acres, necessitating a five-story building configuration. This creates additional challenges related to scale and visibility. Collectively, these conditions impose meaningful constraints on providing signage that is both visible and effective for the community.

Accordingly, we are requesting approval of the proposed Master Sign Plan, which consists of two primary elements.

First, a wall sign (21' x 3.5', 8.5' from grade) is proposed at the courtyard entrance for Building 2000. This sign would be mounted on an existing site wall and enhanced with additional façade treatment to distinguish it from the exposed concrete background. The sign is elevated above existing grade and oriented to the north, allowing visibility for vehicles as they travel around the AutoZone site after entering from the intersection of Waleska Street and Reformation Parkway.


Second, a blade sign (3' x 12', 36' from grade) is proposed between the third and fourth floors on the southeast corner of Building 1000. This sign would be positioned above the adjacent Canton Mill structure, allowing it to be visible within vehicle sightlines after crossing the railroad tracks from the intersection of Railroad Street and Reformation Parkway.

Due to existing buildings and the depth of the community within the development, neither sign will be visible from the public right-of-way.

Thank you for your consideration of this request. Please let us know if you have any questions or require additional information.

Sincerely,

The Residential Group, LLC

A handwritten signature in black ink, appearing to read 'K. Alexander', written in a cursive style.

Kurt R. Alexander  
Principal

cc: File

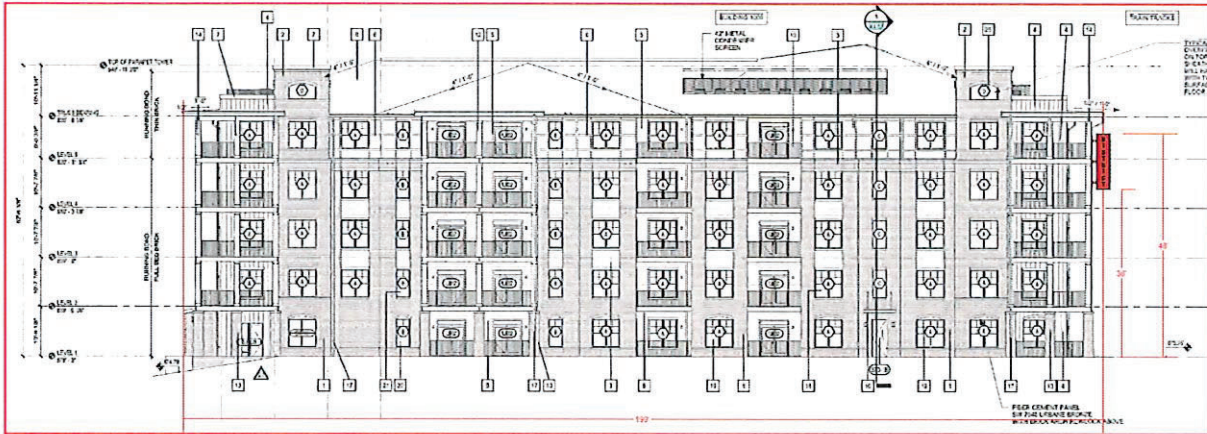
THE DISTRICT ON THE ETOWAH

ILLUMINATED SIGN A - ELEVATIONS ENLARGED - PERMIT

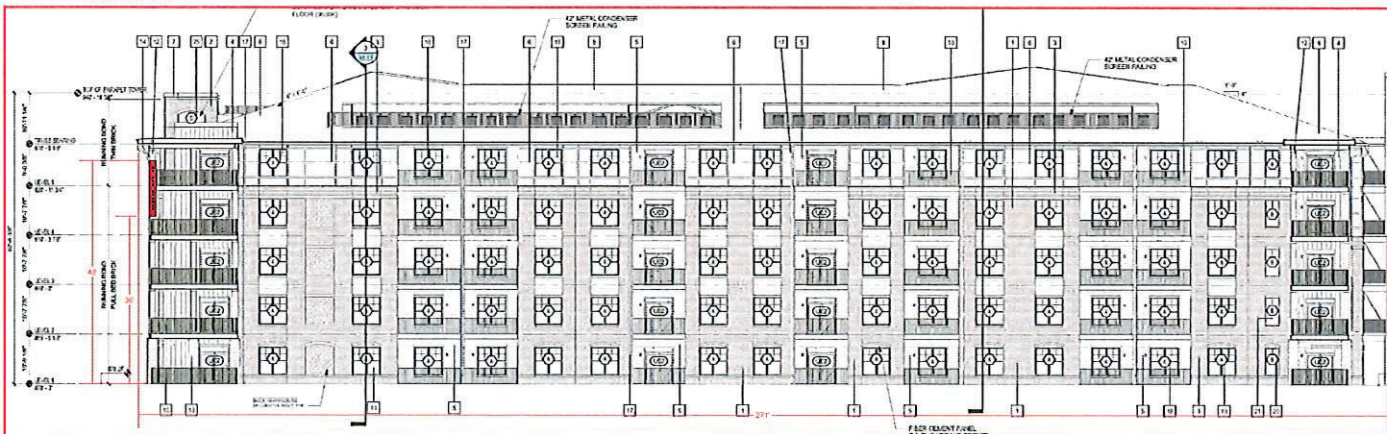
Scale: 1" = 20'



South Elevation



East Elevation



PERMIT MASTER SIGN PLAN

DESIGN DATE  
2-10-26

DESIGN/AM  
CE/BM

PROPERTY NAME & ADDRESS  
DISTRICT ON THE ETOWAH APARTMENTS,  
141 Railroad Street,  
Canton, GA 30114

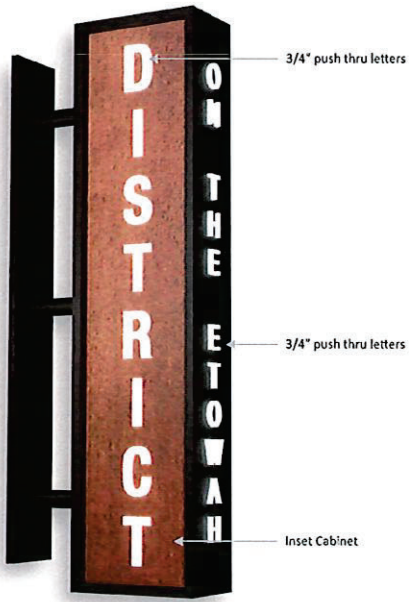
PROPERTY ID/FOLIO #  
14N17024A

DESCRIPTION  
SIGN A  
ELEVATIONS  
ENLARGED

PAGE  
6

THE DISTRICT ON THE ETOWAH

Black White

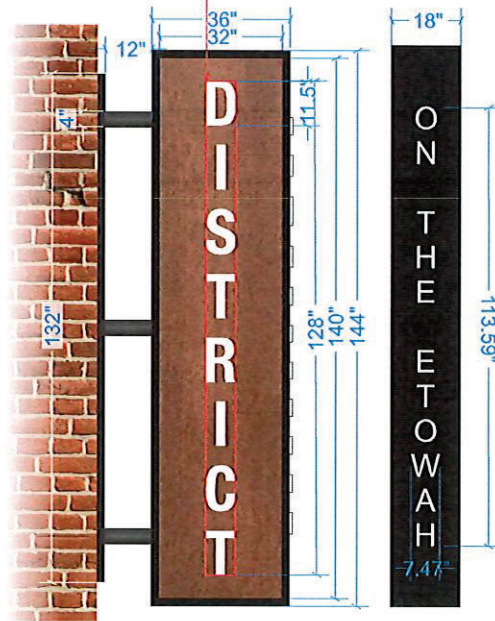


ILLUMINATED SIGN A - SPECS - PERMIT

Scale: 1/2" = 1'

PERMITTING DISCLAIMER  
MAX FACE SQFT: N/A (6.93)  
MAX HEIGHT: N/A (48')

COPY AREA  
7.8" X 128" = 6.93 SQFT



**A) ILLUMINATED BLADE SIGN**  
36" x 144" - Double Sided - Qty:1  
18" Deep Aluminum Cabinet, Painted  
3/4" Acrylic Push-thru Copy  
(Mounted with Mounting Plate Lag screwed to wall)



PERMIT MASTER SIGN PLAN

DESIGN DATE	2-10-26
DESIGN/AM	CE/BM
PROPERTY NAME & ADDRESS	DISTRICT ON THE ETOWAH APARTMENTS, 141 Railroad Street, Canton, GA 30114
PROPERTY ID/FOLIO #	14N17024A
DESCRIPTION	SIGN A SPECS
PAGE	2

ILLUMINATED SIGN A - ELECTRICAL & ATTACHMENT - PERMIT

Scale: 1/2" = 1'

PERMITTING DISCLAIMER  
 MAX FACE SQFT: N/A (6.93)  
 MAX HEIGHT: N/A (48')



PERMIT MASTER SIGN PLAN

DESIGN DATE

2-10-26

DESIGN/AM

CE/BM

PROPERTY NAME & ADDRESS

DISTRICT ON THE ETOWAH APARTMENTS,  
 141 Railroad Street,  
 Canton, GA 30114

PROPERTY ID/FOLIO #

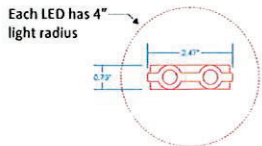
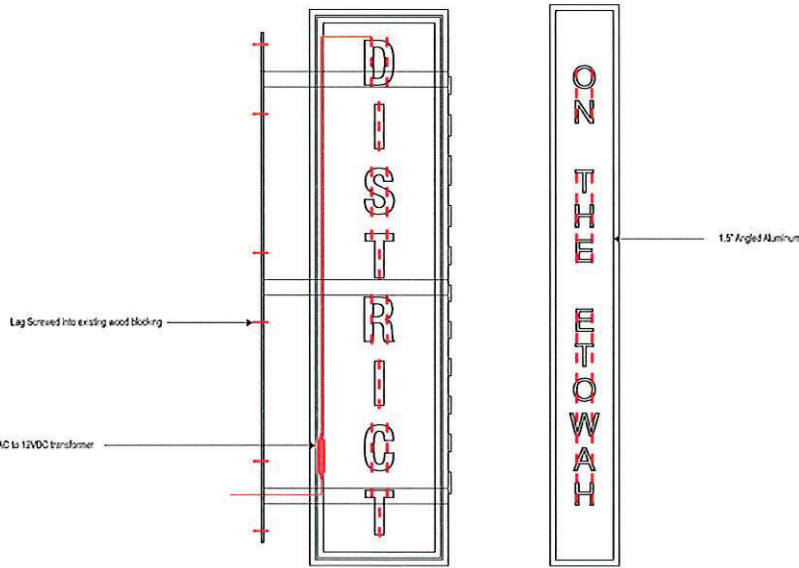
14N17024A

DESCRIPTION

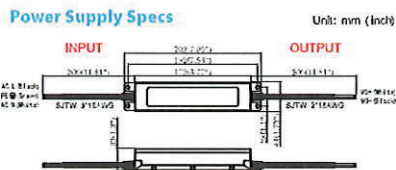
SIGN A ELECTRICAL & ATTACHMENT

PAGE

3



LISTED MET US SN 108  
 Complies With UL 48 Sign Certification E534702

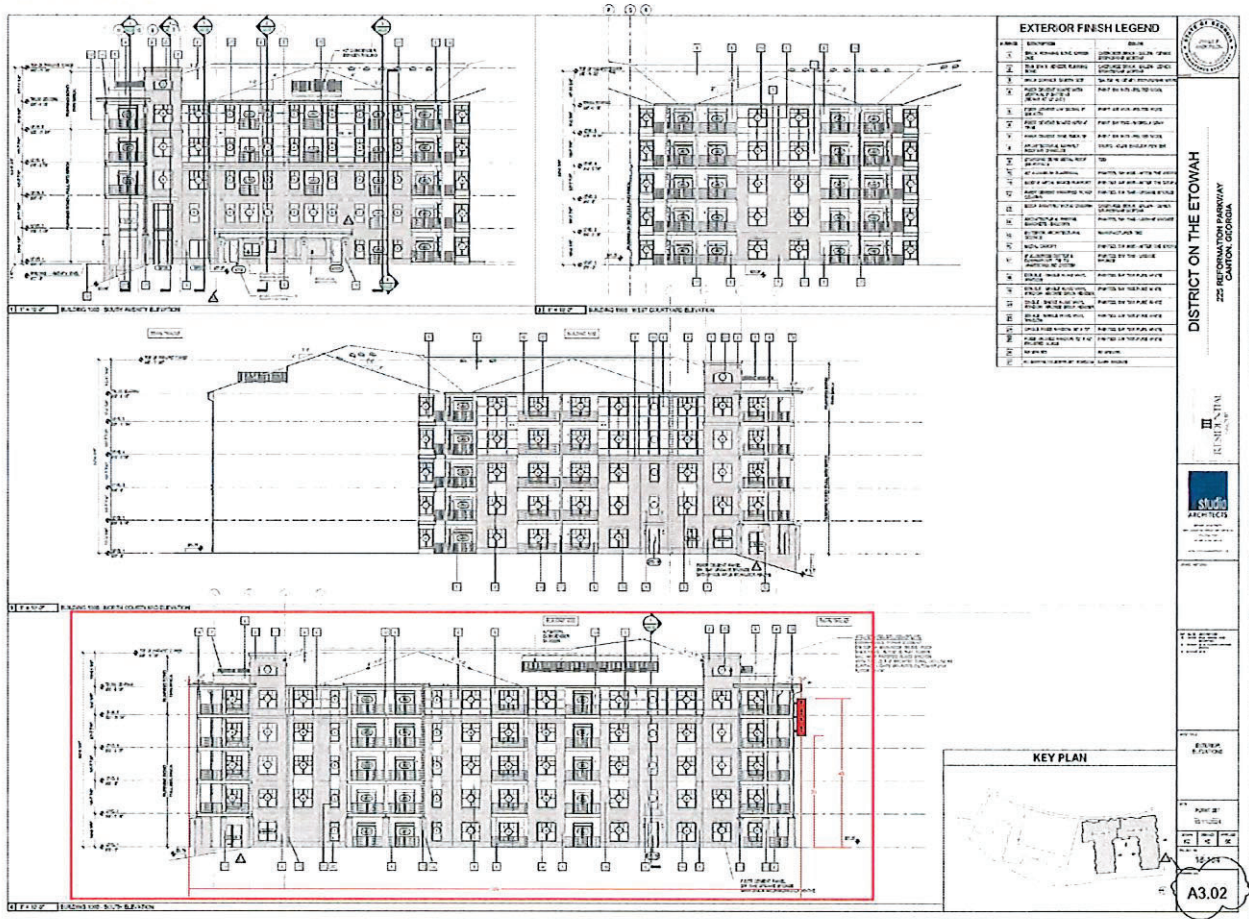


Load: 59%  
 Modules: 74  
 Watts: 88.8W  
 Mean Well HLG 150W (1x)

Input - 120 VAC 1.9 Amps  
 Led Transformer Output - 12VDC 60W (5A)

ILLUMINATED SIGN A - SOUTH ELEVATION - PERMIT

Scale: 1" = 30'

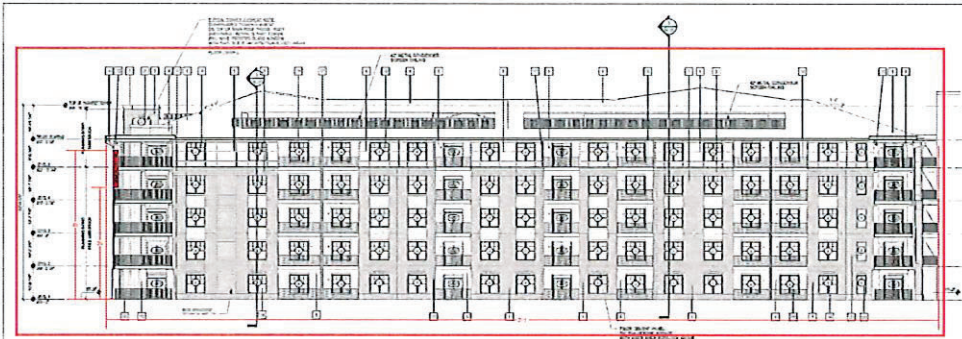


PERMIT MASTER SIGN PLAN

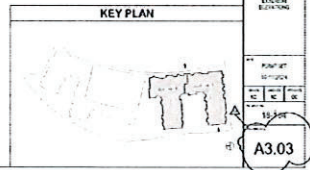
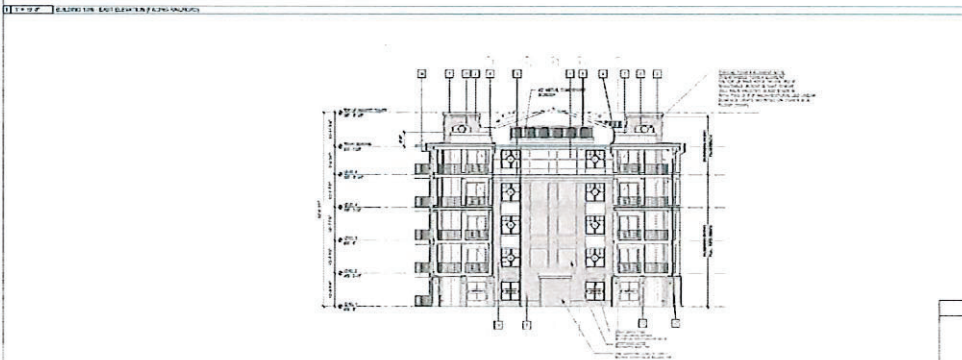
DESIGN DATE	2-10-26
DESIGN/AM	CE/BM
PROPERTY NAME & ADDRESS	DISTRICT ON THE ETOWAH APARTMENTS, 141 Railroad Street, Canton, GA 30114
PROPERTY ID/FOLIO #	14N17024A
DESCRIPTION	SIGN A SOUTH ELEVATION
PAGE	4

ILLUMINATED SIGN A - EAST ELEVATION - PERMIT

Scale: 1" = 30'



EXTERIOR FINISH LEGEND		
NO.	DESCRIPTION	NOTE
1	BRICK PAVING AND CURB	CONCRETE AND CURB SHALL BE 4" MIN. THICK
2	PAVING	CONCRETE AND CURB SHALL BE 4" MIN. THICK
3	PAVING	CONCRETE AND CURB SHALL BE 4" MIN. THICK
4	PAVING	CONCRETE AND CURB SHALL BE 4" MIN. THICK
5	PAVING	CONCRETE AND CURB SHALL BE 4" MIN. THICK
6	PAVING	CONCRETE AND CURB SHALL BE 4" MIN. THICK
7	PAVING	CONCRETE AND CURB SHALL BE 4" MIN. THICK
8	PAVING	CONCRETE AND CURB SHALL BE 4" MIN. THICK
9	PAVING	CONCRETE AND CURB SHALL BE 4" MIN. THICK
10	PAVING	CONCRETE AND CURB SHALL BE 4" MIN. THICK
11	PAVING	CONCRETE AND CURB SHALL BE 4" MIN. THICK
12	PAVING	CONCRETE AND CURB SHALL BE 4" MIN. THICK
13	PAVING	CONCRETE AND CURB SHALL BE 4" MIN. THICK
14	PAVING	CONCRETE AND CURB SHALL BE 4" MIN. THICK
15	PAVING	CONCRETE AND CURB SHALL BE 4" MIN. THICK
16	PAVING	CONCRETE AND CURB SHALL BE 4" MIN. THICK
17	PAVING	CONCRETE AND CURB SHALL BE 4" MIN. THICK
18	PAVING	CONCRETE AND CURB SHALL BE 4" MIN. THICK
19	PAVING	CONCRETE AND CURB SHALL BE 4" MIN. THICK
20	PAVING	CONCRETE AND CURB SHALL BE 4" MIN. THICK
21	PAVING	CONCRETE AND CURB SHALL BE 4" MIN. THICK
22	PAVING	CONCRETE AND CURB SHALL BE 4" MIN. THICK
23	PAVING	CONCRETE AND CURB SHALL BE 4" MIN. THICK
24	PAVING	CONCRETE AND CURB SHALL BE 4" MIN. THICK
25	PAVING	CONCRETE AND CURB SHALL BE 4" MIN. THICK
26	PAVING	CONCRETE AND CURB SHALL BE 4" MIN. THICK
27	PAVING	CONCRETE AND CURB SHALL BE 4" MIN. THICK
28	PAVING	CONCRETE AND CURB SHALL BE 4" MIN. THICK
29	PAVING	CONCRETE AND CURB SHALL BE 4" MIN. THICK
30	PAVING	CONCRETE AND CURB SHALL BE 4" MIN. THICK



A3.03

**SignJive**

**PERMIT MASTER SIGN PLAN**

DESIGN DATE  
2-10-26

DESIGN/AM  
CE/BM

PROPERTY NAME & ADDRESS  
DISTRICT ON THE ETOWAH APARTMENTS,  
141 Railroad Street,  
Canton, GA 30114

PROPERTY ID/FOLIO #  
14N17024A

DESCRIPTION  
SIGN A  
EAST ELEVATION

PAGE  
5

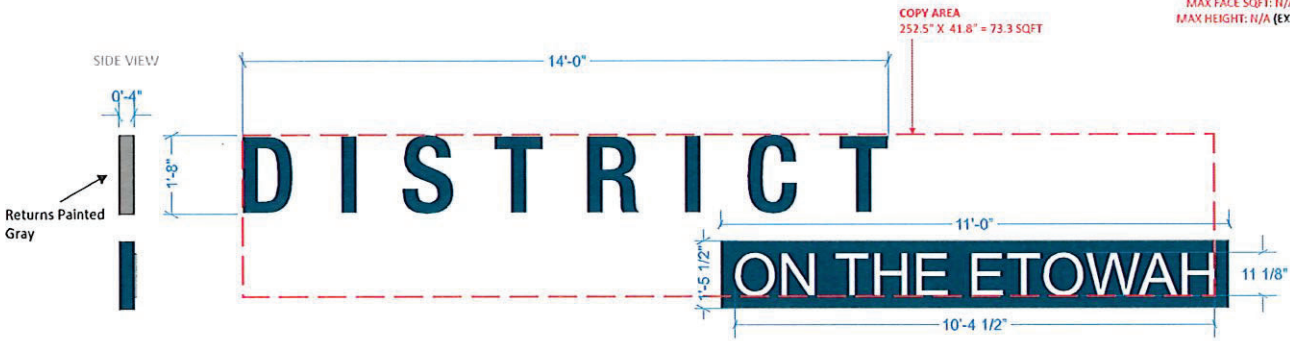
THE DISTRICT ON THE ETOWAH

SU 0077 Classic French Grey SU 9177 Sultry Dog

ILLUMINATED SIGN B - SPECS - PERMIT

Scale: 1/2" = 1'

PERMITTING DISCLAIMER  
MAX FACE SQFT: N/A (73.3)  
MAX HEIGHT: N/A (EXISTING)



NIGHT VIEW



B) ILLUMINATED SIGNS

- 252.5" x 41.8" - Single-Sided - Qty: 1
- 4" Deep Aluminum Channel Letters "DISTRICT" (Halo-Lit),
- 4" Deep Aluminum Shoebox Cabinet w/
- 1/2" Push Thru Acrylic Letters "AT ETOWAH" (Face-Lit)
- (Mount to Monument Structure by others)



PERMIT MASTER SIGN PLAN

DESIGN DATE	2-10-26
DESIGN/AM	CE/BM
PROPERTY NAME & ADDRESS	DISTRICT ON THE ETOWAH APARTMENTS, 141 Railroad Street, Canton, GA 30114
PROPERTY ID/FOLIO #	14N17024A
DESCRIPTION	SIGN B SPECS
PAGE	7

THE DISTRICT ON THE ETOWAH

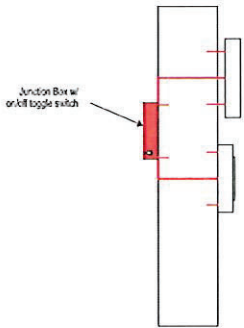
ILLUMINATED SIGN B - ELECTRICAL & ATTACHMENT - PERMIT

Scale: 1/2" = 1'

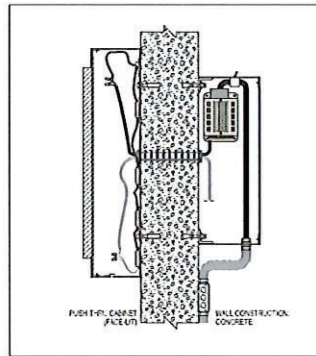
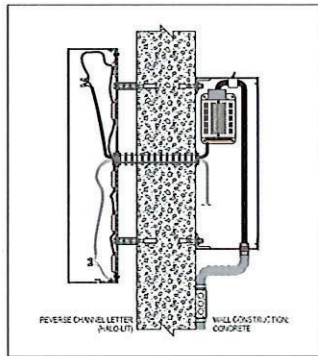
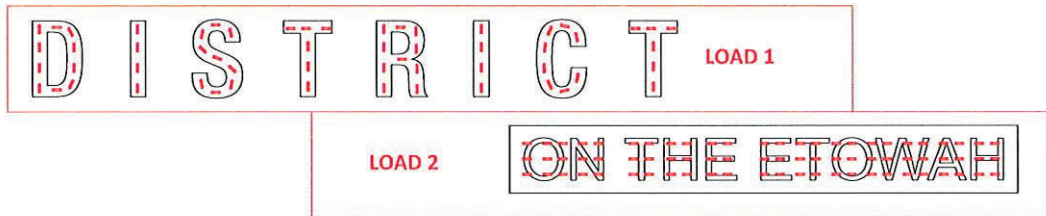
PERMITTING DISCLAIMER  
MAX FACE SQFT: N/A (73.3)  
MAX HEIGHT: N/A (TBD)



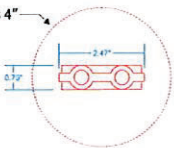
SIDE VIEW



ELECTRICAL TO BACK SIDE OF WALL



Each LED has 4" light radius



LOAD 1

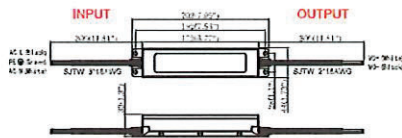
Load: 68%  
Modules: 57  
Watts: 68.4W  
Mean Well HLG 100W (1x)

LOAD 2

Load: 60%  
Modules: 75  
Watts: 90W  
Mean Well HLG 150W (1x)

Power Supply Specs

Unit: mm (Inch)



Input - 120 VAC 1.9 Amps

Led Transformer Output - 12VDC 60W (5A)



Complies With  
UL 48  
Sign Certification  
E534702

PERMIT  
MASTER  
SIGN PLAN

DESIGN DATE

2-10-26

DESIGN/AM

CE/BM

PROPERTY NAME  
& ADDRESS

DISTRICT ON THE  
ETOWAH APARTMENTS,  
141 Railroad Street,  
Canton, GA 30114

PROPERTY ID/FOLIO #

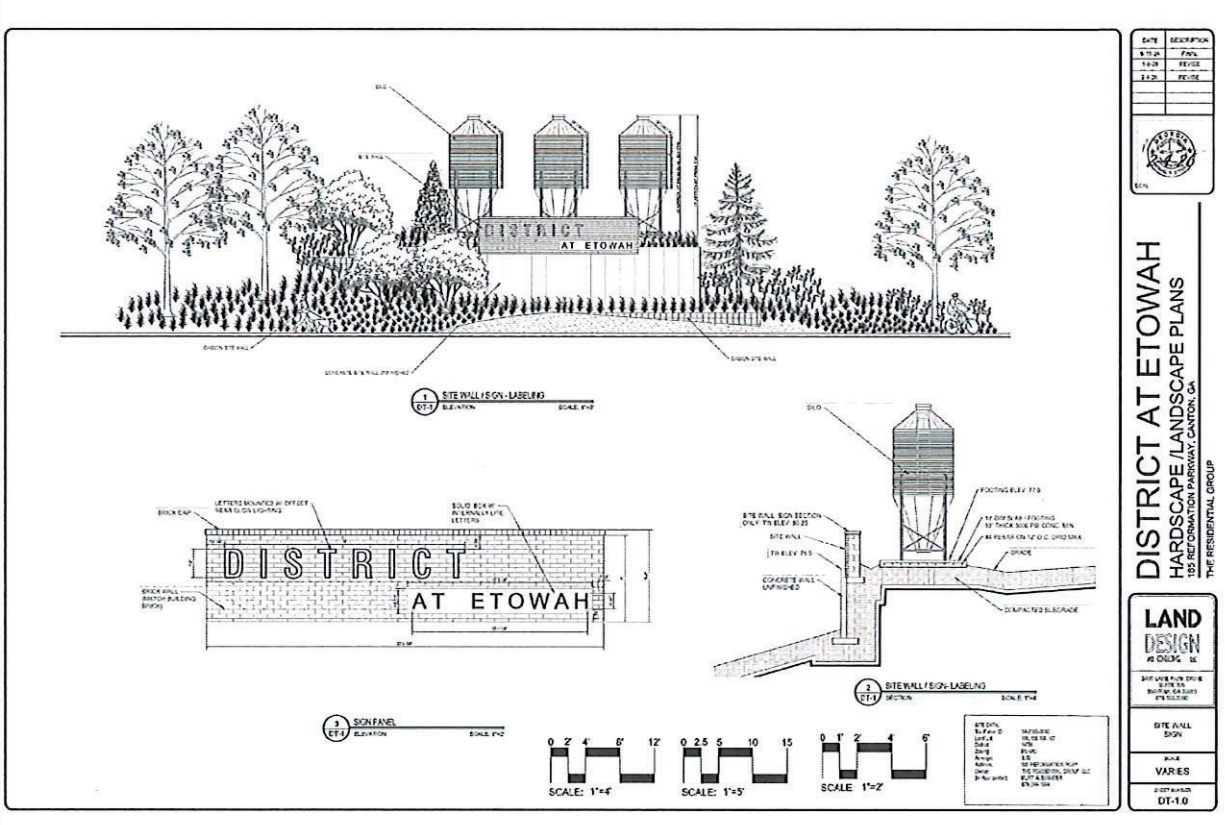
14N17024A

DESCRIPTION

SIGN B  
ELECTRICAL &  
ATTACHMENT

PAGE

8



DATE	DESCRIPTION
8-10-24	FINAL
7-10-24	REVISE
5-10-24	REVISE

**DISTRICT AT ETOWAH**  
**HARDSCAPE / LANDSCAPE PLANS**  
 1000 COMMERCIAL PARKWAY, CANTON, GA  
 THE RESIDENTIAL GROUP

<b>LAND DESIGN</b>
3000 W. WINDY HILL DR. SUITE 100 CANTON, GA 30114
DATE: 8/10/24
BY: [Signature]
CHECKED BY: [Signature]
SCALE: Varies
PROJECT NO: DT-119

**PERMIT MASTER SIGN PLAN**

**DESIGN DATE**  
2-10-26

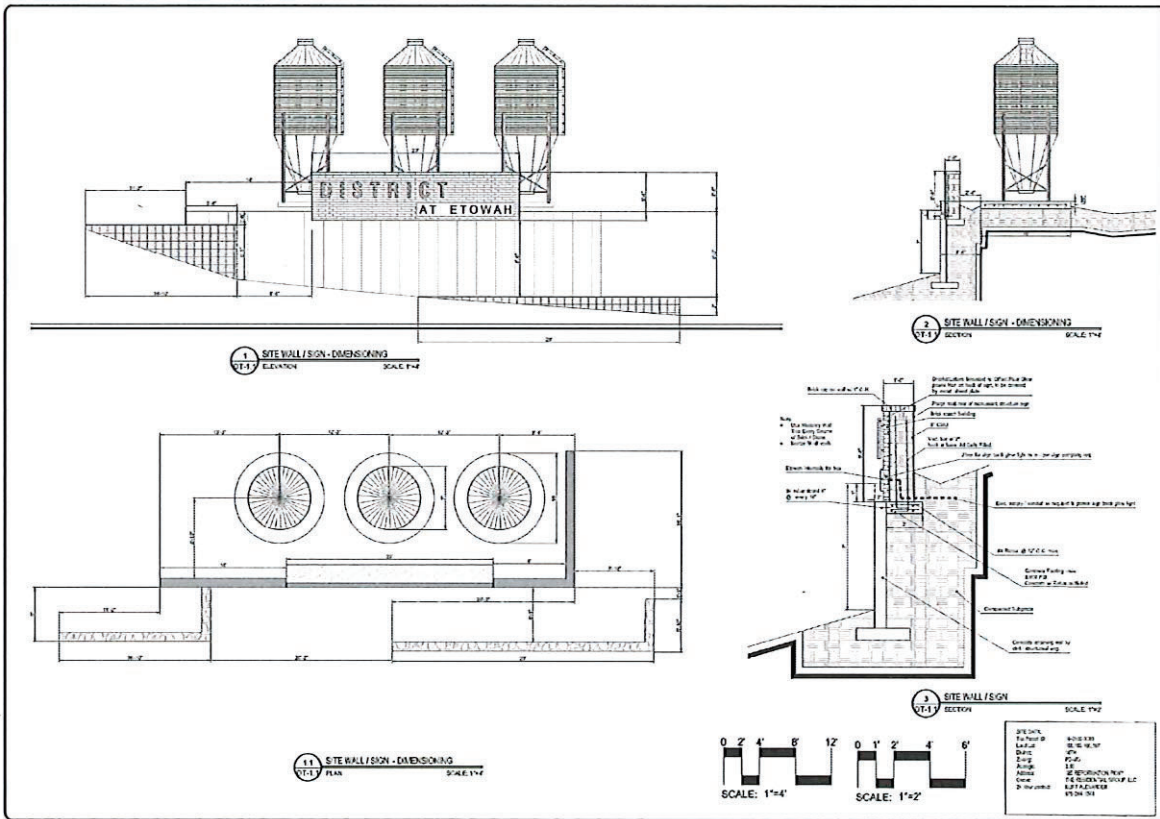
**DESIGN/AM**  
CE/BM

**PROPERTY NAME & ADDRESS**  
DISTRICT ON THE ETOWAH APARTMENTS,  
141 Railroad Street,  
Canton, GA 30114

**PROPERTY ID/FOLIO #**  
14N17024A

**DESCRIPTION**  
SIGN B  
ENGINEERING

**PAGE**  
9



DATE	DESCRIPTION
8-11-24	FINAL
4-26-24	FINAL
2-24-24	REVISE

**DISTRICT AT ETOWAH**  
**HARDSCAPE / LANDSCAPE PLANS**  
 THE RESIDENTIAL GROUP

**LAND DESIGN**  
 INC.  
 2400 WOODBRIDGE DRIVE  
 SUITE 100  
 KENNESAW, GA 30144  
 (770) 425-1111

SITE WALL / SIGN
VARIES
DATE PLOTTED: 8/11/24

**PERMIT MASTER SIGN PLAN**

**DESIGN DATE**  
2-10-26

**DESIGN/AM**  
CE/BM

**PROPERTY NAME & ADDRESS**  
 DISTRICT ON THE ETOWAH APARTMENTS,  
 141 Railroad Street,  
 Canton, GA 30114

**PROPERTY ID/FOLIO #**  
14N17024A

**DESCRIPTION**  
SIGN B  
ENGINEERING CONTINUED

**PAGE**  
10



NON-ILLUMINATED SIGN C - SPECS - PERMIT

Scale: 1" = 16"

PERMITTING DISCLAIMER  
MAX FACE SQFT: N/A (19)  
MAX HEIGHT: N/A (41')

COPY AREA  
56.5" X 48.5" = 19 SQFT



**C) BUILDING ADDRESSES**  
60" x 60" - Single Sided - Qty:2  
.080" Aluminum panel, DTS/ACC  
"215" 1" PVC painted White  
"1000" 0.5" PVC painted White  
"2000" 0.5" PVC painted White  
(Mount to wall - 4 caps)

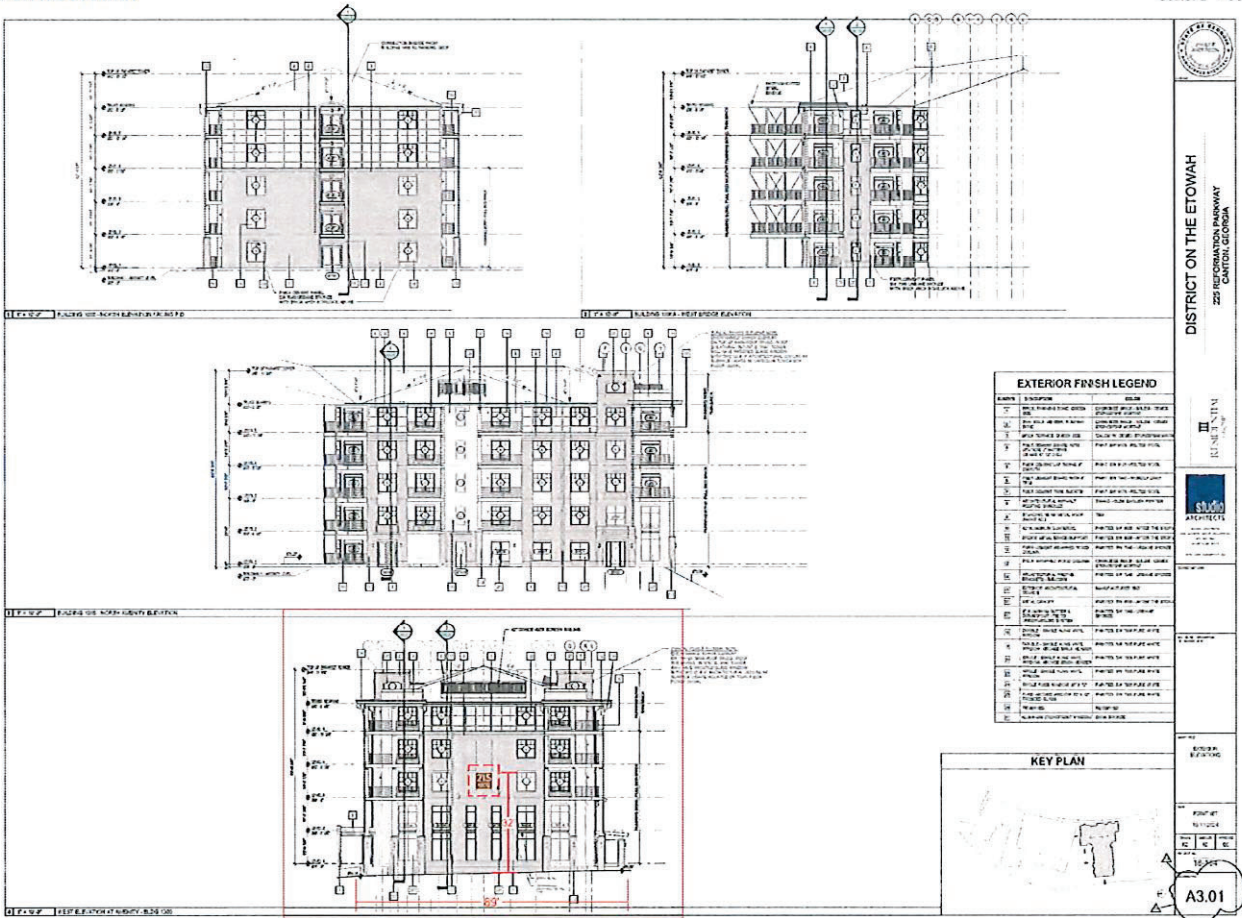


**PERMIT  
MASTER  
SIGN PLAN**

DESIGN DATE	2-10-26
DESIGN/AM	CE/BM
PROPERTY NAME & ADDRESS	DISTRICT ON THE ETOWAH APARTMENTS, 141 Railroad Street, Canton, GA 30114
PROPERTY ID/FOLIO #	14N17024A
DESCRIPTION	SIGN C SPECS
PAGE	11

NON-ILLUMINATED SIGN C.1 - ELEVATION - PERMIT

Scale: 1" = 30'



**SignJive**

**PERMIT MASTER SIGN PLAN**

DESIGN DATE: 2-10-26

DESIGN/AM: CE/BM

PROPERTY NAME & ADDRESS: DISTRICT ON THE ETOWAH APARTMENTS, 141 Railroad Street, Canton, GA 30114

PROPERTY ID/FOLIO #: 14N17024A

DESCRIPTION: SIGN C.1 ELEVATION

PAGE: 12

NON-ILLUMINATED SIGN C - ELEVATION ENLARGED - PERMIT

Scale: 1" = 10'



**PERMIT MASTER SIGN PLAN**

DESIGN DATE  
2-10-26

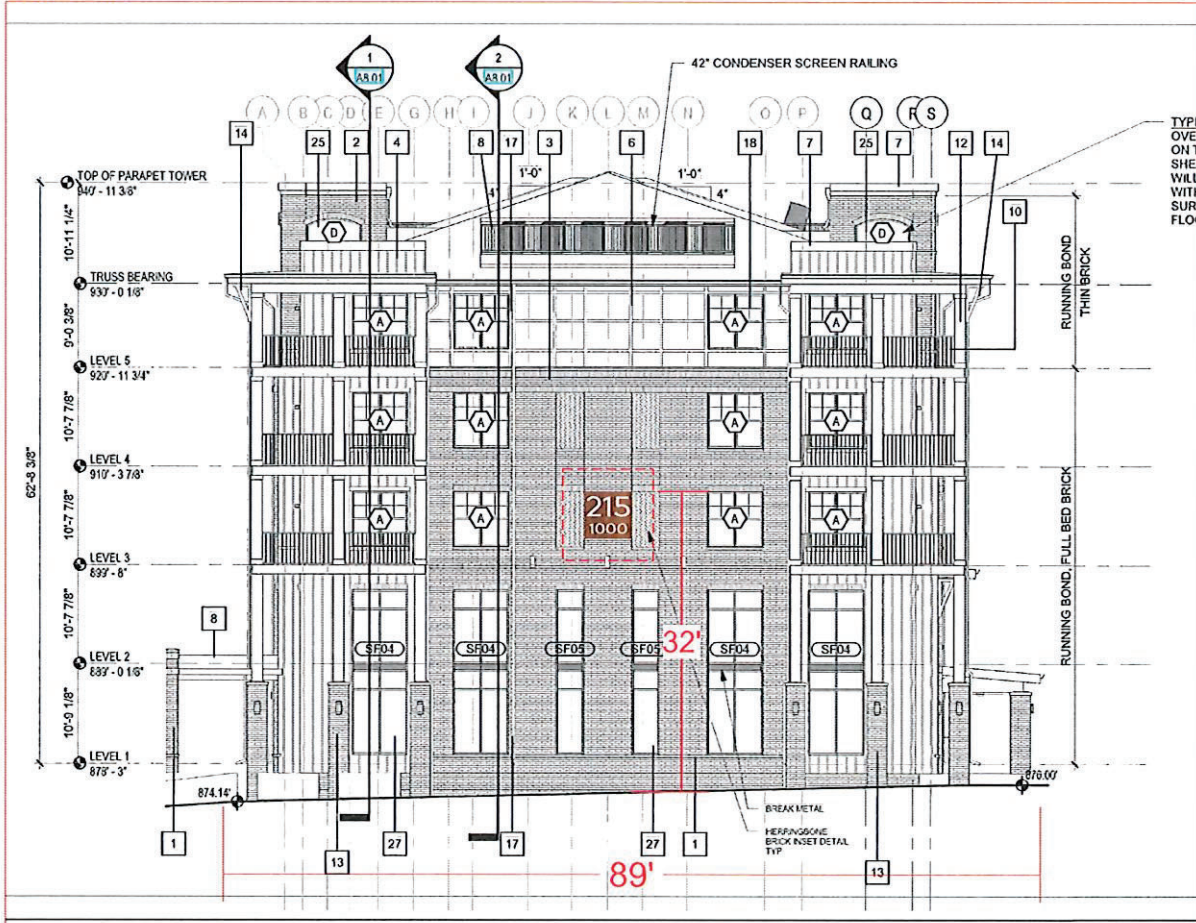
DESIGN/AM  
CE/BM

PROPERTY NAME & ADDRESS  
DISTRICT ON THE ETOWAH APARTMENTS,  
141 Railroad Street,  
Canton, GA 30114

PROPERTY ID/FOLIO #  
14N17024A

DESCRIPTION  
SIGN C.1  
ELEVATION ENLARGED

PAGE  
13





**PERMIT  
MASTER  
SIGN PLAN**

**DESIGN DATE**  
2-10-26

**DESIGN/AM**  
CE/BM

**PROPERTY NAME & ADDRESS**  
DISTRICT ON THE ETOWAH APARTMENTS,  
141 Railroad Street,  
Canton, GA 30114

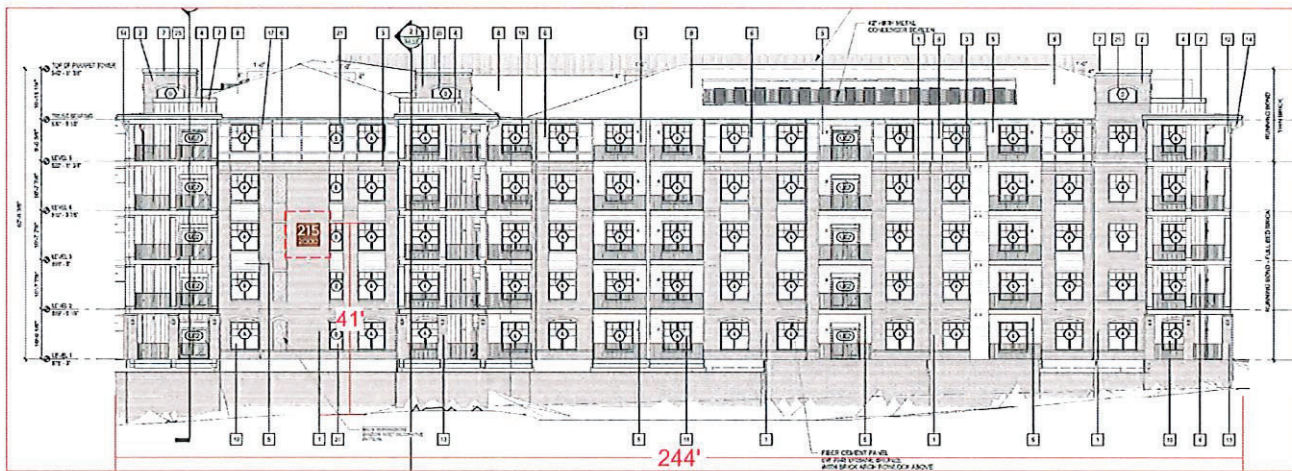
**PROPERTY ID/FOLIO #**  
14N17024A

**DESCRIPTION**  
SIGN C.2  
ELEVATION

**PAGE**  
14

NUMBER	DESCRIPTION	FINISH
1	CONCRETE	PAINTED
2	BRICK	PAINTED
3	GLASS	PAINTED
4	WOOD	PAINTED
5	IRON	PAINTED
6	STEEL	PAINTED
7	ALUMINUM	PAINTED
8	COPPER	PAINTED
9	BRASS	PAINTED
10	BRONZE	PAINTED
11	SILVER	PAINTED
12	GOLD	PAINTED
13	PLATINUM	PAINTED
14	PALLADIUM	PAINTED
15	RHODIUM	PAINTED
16	IRIDIUM	PAINTED
17	OSMIUM	PAINTED
18	SELENIUM	PAINTED
19	TUNGSTEN	PAINTED
20	NIOBIUM	PAINTED
21	ZIRCONIUM	PAINTED
22	HAFNIUM	PAINTED
23	TANTALUM	PAINTED
24	NIOBIUM	PAINTED
25	MOSENIUM	PAINTED
26	COBALT	PAINTED
27	NICKEL	PAINTED
28	COPPER	PAINTED
29	ZINC	PAINTED
30	IRON	PAINTED
31	STEEL	PAINTED
32	ALUMINUM	PAINTED
33	MAGNESIUM	PAINTED
34	TITANIUM	PAINTED
35	BERYLLIUM	PAINTED
36	LITHIUM	PAINTED
37	SODIUM	PAINTED
38	POTASSIUM	PAINTED
39	CALCIUM	PAINTED
40	SCANDIUM	PAINTED
41	TITANIUM	PAINTED
42	VANADIUM	PAINTED
43	CHROMIUM	PAINTED
44	MANGANESE	PAINTED
45	IRON	PAINTED
46	COBALT	PAINTED
47	NICKEL	PAINTED
48	COPPER	PAINTED
49	ZINC	PAINTED
50	ALUMINUM	PAINTED
51	MAGNESIUM	PAINTED
52	TITANIUM	PAINTED
53	BERYLLIUM	PAINTED
54	LITHIUM	PAINTED
55	SODIUM	PAINTED
56	POTASSIUM	PAINTED
57	CALCIUM	PAINTED
58	SCANDIUM	PAINTED
59	TITANIUM	PAINTED
60	VANADIUM	PAINTED
61	CHROMIUM	PAINTED
62	MANGANESE	PAINTED
63	IRON	PAINTED
64	COBALT	PAINTED
65	NICKEL	PAINTED
66	COPPER	PAINTED
67	ZINC	PAINTED
68	ALUMINUM	PAINTED
69	MAGNESIUM	PAINTED
70	TITANIUM	PAINTED
71	BERYLLIUM	PAINTED
72	LITHIUM	PAINTED
73	SODIUM	PAINTED
74	POTASSIUM	PAINTED
75	CALCIUM	PAINTED
76	SCANDIUM	PAINTED
77	TITANIUM	PAINTED
78	VANADIUM	PAINTED
79	CHROMIUM	PAINTED
80	MANGANESE	PAINTED
81	IRON	PAINTED
82	COBALT	PAINTED
83	NICKEL	PAINTED
84	COPPER	PAINTED
85	ZINC	PAINTED
86	ALUMINUM	PAINTED
87	MAGNESIUM	PAINTED
88	TITANIUM	PAINTED
89	BERYLLIUM	PAINTED
90	LITHIUM	PAINTED
91	SODIUM	PAINTED
92	POTASSIUM	PAINTED
93	CALCIUM	PAINTED
94	SCANDIUM	PAINTED
95	TITANIUM	PAINTED
96	VANADIUM	PAINTED
97	CHROMIUM	PAINTED
98	MANGANESE	PAINTED
99	IRON	PAINTED
100	COBALT	PAINTED
101	NICKEL	PAINTED
102	COPPER	PAINTED
103	ZINC	PAINTED
104	ALUMINUM	PAINTED
105	MAGNESIUM	PAINTED
106	TITANIUM	PAINTED
107	BERYLLIUM	PAINTED
108	LITHIUM	PAINTED
109	SODIUM	PAINTED
110	POTASSIUM	PAINTED
111	CALCIUM	PAINTED
112	SCANDIUM	PAINTED
113	TITANIUM	PAINTED
114	VANADIUM	PAINTED
115	CHROMIUM	PAINTED
116	MANGANESE	PAINTED
117	IRON	PAINTED
118	COBALT	PAINTED
119	NICKEL	PAINTED
120	COPPER	PAINTED
121	ZINC	PAINTED
122	ALUMINUM	PAINTED
123	MAGNESIUM	PAINTED
124	TITANIUM	PAINTED
125	BERYLLIUM	PAINTED
126	LITHIUM	PAINTED
127	SODIUM	PAINTED
128	POTASSIUM	PAINTED
129	CALCIUM	PAINTED
130	SCANDIUM	PAINTED
131	TITANIUM	PAINTED
132	VANADIUM	PAINTED
133	CHROMIUM	PAINTED
134	MANGANESE	PAINTED
135	IRON	PAINTED
136	COBALT	PAINTED
137	NICKEL	PAINTED
138	COPPER	PAINTED
139	ZINC	PAINTED
140	ALUMINUM	PAINTED
141	MAGNESIUM	PAINTED
142	TITANIUM	PAINTED
143	BERYLLIUM	PAINTED
144	LITHIUM	PAINTED
145	SODIUM	PAINTED
146	POTASSIUM	PAINTED
147	CALCIUM	PAINTED
148	SCANDIUM	PAINTED
149	TITANIUM	PAINTED
150	VANADIUM	PAINTED
151	CHROMIUM	PAINTED
152	MANGANESE	PAINTED
153	IRON	PAINTED
154	COBALT	PAINTED
155	NICKEL	PAINTED
156	COPPER	PAINTED
157	ZINC	PAINTED
158	ALUMINUM	PAINTED
159	MAGNESIUM	PAINTED
160	TITANIUM	PAINTED
161	BERYLLIUM	PAINTED
162	LITHIUM	PAINTED
163	SODIUM	PAINTED
164	POTASSIUM	PAINTED
165	CALCIUM	PAINTED
166	SCANDIUM	PAINTED
167	TITANIUM	PAINTED
168	VANADIUM	PAINTED
169	CHROMIUM	PAINTED
170	MANGANESE	PAINTED
171	IRON	PAINTED
172	COBALT	PAINTED
173	NICKEL	PAINTED
174	COPPER	PAINTED
175	ZINC	PAINTED
176	ALUMINUM	PAINTED
177	MAGNESIUM	PAINTED
178	TITANIUM	PAINTED
179	BERYLLIUM	PAINTED
180	LITHIUM	PAINTED
181	SODIUM	PAINTED
182	POTASSIUM	PAINTED
183	CALCIUM	PAINTED
184	SCANDIUM	PAINTED
185	TITANIUM	PAINTED
186	VANADIUM	PAINTED
187	CHROMIUM	PAINTED
188	MANGANESE	PAINTED
189	IRON	PAINTED
190	COBALT	PAINTED
191	NICKEL	PAINTED
192	COPPER	PAINTED
193	ZINC	PAINTED
194	ALUMINUM	PAINTED
195	MAGNESIUM	PAINTED
196	TITANIUM	PAINTED
197	BERYLLIUM	PAINTED
198	LITHIUM	PAINTED
199	SODIUM	PAINTED
200	POTASSIUM	PAINTED
201	CALCIUM	PAINTED
202	SCANDIUM	PAINTED
203	TITANIUM	PAINTED
204	VANADIUM	PAINTED
205	CHROMIUM	PAINTED
206	MANGANESE	PAINTED
207	IRON	PAINTED
208	COBALT	PAINTED
209	NICKEL	PAINTED
210	COPPER	PAINTED
211	ZINC	PAINTED
212	ALUMINUM	PAINTED
213	MAGNESIUM	PAINTED
214	TITANIUM	PAINTED
215	BERYLLIUM	PAINTED
216	LITHIUM	PAINTED
217	SODIUM	PAINTED
218	POTASSIUM	PAINTED
219	CALCIUM	PAINTED
220	SCANDIUM	PAINTED
221	TITANIUM	PAINTED
222	VANADIUM	PAINTED
223	CHROMIUM	PAINTED
224	MANGANESE	PAINTED
225	IRON	PAINTED
226	COBALT	PAINTED
227	NICKEL	PAINTED
228	COPPER	PAINTED
229	ZINC	PAINTED
230	ALUMINUM	PAINTED
231	MAGNESIUM	PAINTED
232	TITANIUM	PAINTED
233	BERYLLIUM	PAINTED
234	LITHIUM	PAINTED
235	SODIUM	PAINTED
236	POTASSIUM	PAINTED
237	CALCIUM	PAINTED
238	SCANDIUM	PAINTED
239	TITANIUM	PAINTED
240	VANADIUM	PAINTED
241	CHROMIUM	PAINTED
242	MANGANESE	PAINTED
243	IRON	PAINTED
244	COBALT	PAINTED
245	NICKEL	PAINTED
246	COPPER	PAINTED
247	ZINC	PAINTED
248	ALUMINUM	PAINTED
249	MAGNESIUM	PAINTED
250	TITANIUM	PAINTED
251	BERYLLIUM	PAINTED
252	LITHIUM	PAINTED
253	SODIUM	PAINTED
254	POTASSIUM	PAINTED
255	CALCIUM	PAINTED
256	SCANDIUM	PAINTED
257	TITANIUM	PAINTED
258	VANADIUM	PAINTED
259	CHROMIUM	PAINTED
260	MANGANESE	PAINTED
261	IRON	PAINTED
262	COBALT	PAINTED
263	NICKEL	PAINTED
264	COPPER	PAINTED
265	ZINC	PAINTED
266	ALUMINUM	PAINTED
267	MAGNESIUM	PAINTED
268	TITANIUM	PAINTED
269	BERYLLIUM	PAINTED
270	LITHIUM	PAINTED
271	SODIUM	PAINTED
272	POTASSIUM	PAINTED
273	CALCIUM	PAINTED
274	SCANDIUM	PAINTED
275	TITANIUM	PAINTED
276	VANADIUM	PAINTED
277	CHROMIUM	PAINTED
278	MANGANESE	PAINTED
279	IRON	PAINTED
280	COBALT	PAINTED
281	NICKEL	PAINTED
282	COPPER	PAINTED
283	ZINC	PAINTED
284	ALUMINUM	PAINTED
285	MAGNESIUM	PAINTED
286	TITANIUM	PAINTED
287	BERYLLIUM	PAINTED
288	LITHIUM	PAINTED
289	SODIUM	PAINTED
290	POTASSIUM	PAINTED
291	CALCIUM	PAINTED
292	SCANDIUM	PAINTED
293	TITANIUM	PAINTED
294	VANADIUM	PAINTED
295	CHROMIUM	PAINTED
296	MANGANESE	PAINTED
297	IRON	PAINTED
298	COBALT	PAINTED
299	NICKEL	PAINTED
300	COPPER	PAINTED
301	ZINC	PAINTED
302	ALUMINUM	PAINTED
303	MAGNESIUM	PAINTED
304	TITANIUM	PAINTED
305	BERYLLIUM	PAINTED
306	LITHIUM	PAINTED
307	SODIUM	PAINTED
308	POTASSIUM	PAINTED
309	CALCIUM	PAINTED
310	SCANDIUM	PAINTED
311	TITANIUM	PAINTED
312	VANADIUM	PAINTED
313	CHROMIUM	PAINTED
314	MANGANESE	PAINTED
315	IRON	PAINTED
316	COBALT	PAINTED
317	NICKEL	PAINTED
318	COPPER	PAINTED
319	ZINC	PAINTED
320	ALUMINUM	PAINTED
321	MAGNESIUM	PAINTED
322	TITANIUM	PAINTED
323	BERYLLIUM	PAINTED
324	LITHIUM	PAINTED
325	SODIUM	PAINTED
326	POTASSIUM	PAINTED
327	CALCIUM	PAINTED
328	SCANDIUM	PAINTED
329	TITANIUM	PAINTED
330	VANADIUM	PAINTED
331	CHROMIUM	PAINTED
332	MANGANESE	PAINTED
333	IRON	PAINTED
334	COBALT	PAINTED
335	NICKEL	PAINTED
336	COPPER	PAINTED
337	ZINC	PAINTED
338	ALUMINUM	PAINTED
339	MAGNESIUM	PAINTED
340	TITANIUM	PAINTED
341	BERYLLIUM	PAINTED
342	LITHIUM	PAINTED
343	SODIUM	PAINTED
344	POTASSIUM	PAINTED
345	CALCIUM	PAINTED
346	SCANDIUM	PAINTED
347	TITANIUM	PAINTED
348	VANADIUM	PAINTED
349	CHROMIUM	PAINTED
350	MANGANESE	PAINTED
351	IRON	PAINTED
352	COBALT	PAINTED
353	NICKEL	PAINTED
354	COPPER	PAINTED
355	ZINC	PAINTED
356	ALUMINUM	PAINTED
357	MAGNESIUM	PAINTED
358	TITANIUM	PAINTED
359	BERYLLIUM	PAINTED
360	LITHIUM	PAINTED
361	SODIUM	PAINTED
362	POTASSIUM	PAINTED
363	CALCIUM	PAINTED
364	SCANDIUM	PAINTED
365	TITANIUM	PAINTED
366	VANADIUM	PAINTED
367	CHROMIUM	PAINTED
368	MANGANESE	PAINTED
369	IRON	PAINTED
370	COBALT	PAINTED
371	NICKEL	PAINTED
372	COPPER	PAINTED
373	ZINC	PAINTED
374	ALUMINUM	PAINTED
375	MAGNESIUM	PAINTED
376	TITANIUM	PAINTED
377	BERYLLIUM	PAINTED
378	LITHIUM	PAINTED
379	SODIUM	PAINTED
380	POTASSIUM	PAINTED
381	CALCIUM	PAINTED
382	SCANDIUM	PAINTED
383	TITANIUM	PAINTED
384	VANADIUM	PAINTED
385	CHROMIUM	PAINTED
386	MANGANESE	PAINTED
387	IRON	PAINTED
388	COBALT	PAINTED
389	NICKEL	PAINTED
390	COPPER	PAINTED
391	ZINC	PAINTED
392	ALUMINUM	PAINTED
393	MAGNESIUM	PAINTED
394	TITANIUM	PAINTED
395	BERYLLIUM	PAINTED
396	LITHIUM	PAINTED
397	SODIUM	PAINTED
398	POTASSIUM	PAINTED
399	CALCIUM	PAINTED
400	SCANDIUM	PAINTED

**DISTRICT ON THE ETOWAH**  
228 REFORMATION PARKWAY  
CANTON, GEORGIA



**PERMIT MASTER SIGN PLAN**

DESIGN DATE  
2-10-26

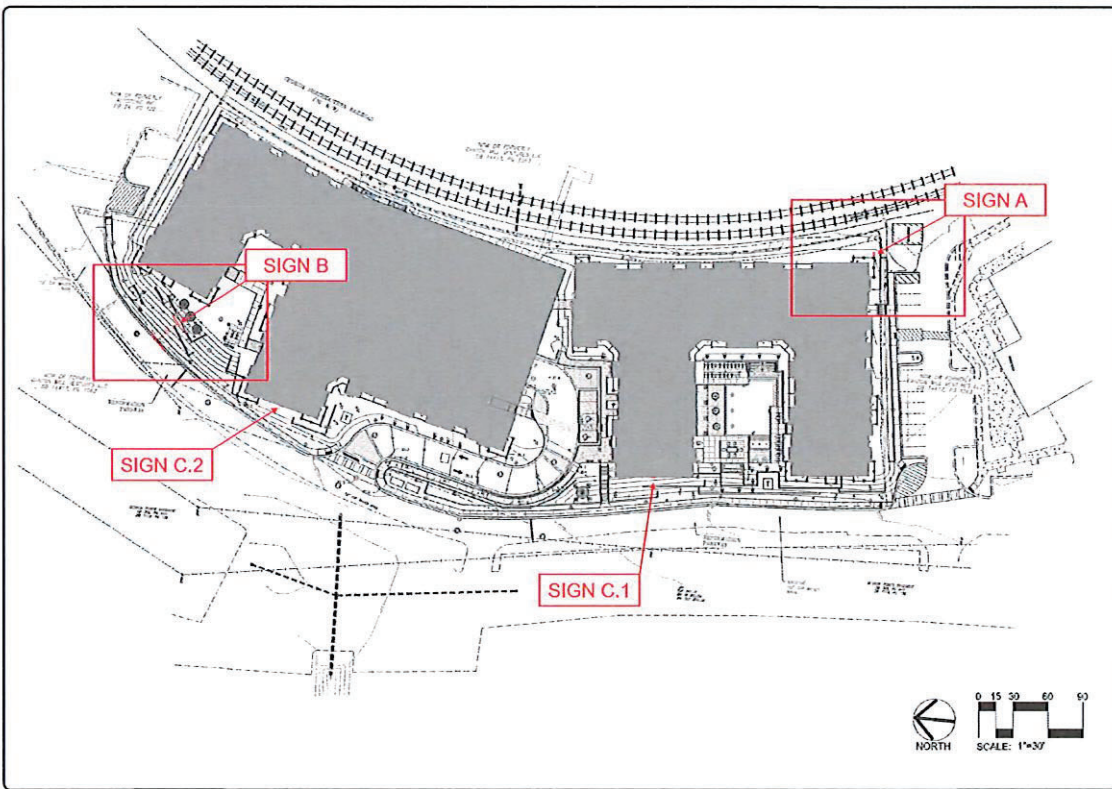
DESIGN/AM  
CE/BM

PROPERTY NAME & ADDRESS  
DISTRICT ON THE ETOWAH APARTMENTS,  
141 Railroad Street,  
Canton, GA 30114

PROPERTY ID/FOLIO #  
14N17024A

DESCRIPTION  
SIGN C.2  
ELEVATION ENLARGED

PAGE  
15



GATE	DESCRIPTION
R222K	FINAL
R112K	NOTED

**DISTRICT AT ETOWAH**  
 HARDSCAPE / LANDSCAPE PLANS  
 141 RAILROAD STREET, CANTON, GA  
 THE RESIDENTIAL GROUP

**LAND DESIGN**  
 AT DESIGN, LLC  
 2000 WOODBRIDGE DRIVE, SUITE 100  
 ATLANTA, GA 30329  
 (404) 525-1100  
 www.landdesignat.com

OVERALL SITE PLAN  
 DATE: 11-5-17  
 PROJECT: SP-1.0

<b>PERMIT MASTER SIGN PLAN</b>	
DESIGN DATE	2-10-26
DESIGN/AM	CE/BM
PROPERTY NAME & ADDRESS	DISTRICT ON THE ETOWAH APARTMENTS, 141 Railroad Street, Canton, GA 30114
PROPERTY ID/FOLIO #	14N17024A
DESCRIPTION	SIGN A PLOT SURVEY
PAGE	16



**PERMIT  
MASTER  
SIGN PLAN**

**DESIGN DATE**

2-10-26

**DESIGN/AM**

CE/BM

**PROPERTY NAME  
& ADDRESS**

DISTRICT ON THE  
ETOWAH APARTMENTS,  
141 Railroad Street,  
Canton, GA 30114

**PROPERTY ID/FOLIO #**

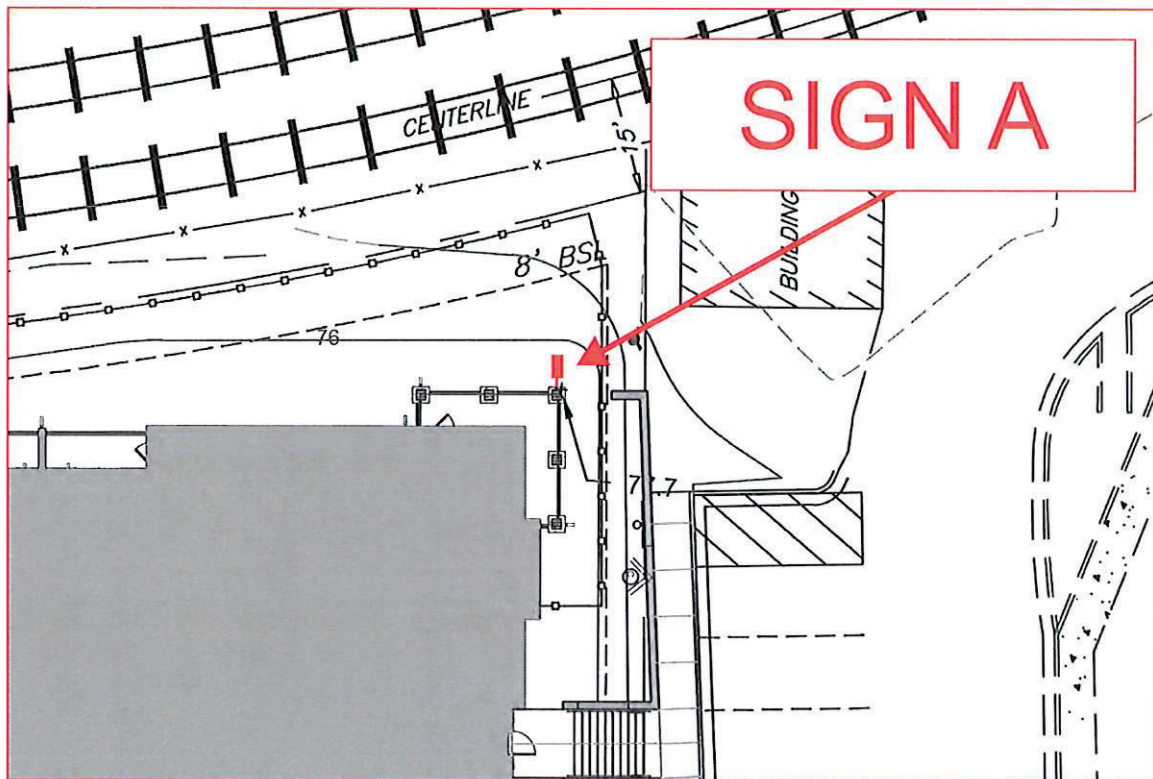
14N17024A

**DESCRIPTION**

SIGN A  
PLOT SURVEY  
ENLARGED

**PAGE**

17





**PERMIT  
MASTER  
SIGN PLAN**

**DESIGN DATE**

2-10-26

**DESIGN/AM**

CE/BM

**PROPERTY NAME  
& ADDRESS**

DISTRICT ON THE  
ETOWAH APARTMENTS,  
141 Railroad Street,  
Canton, GA 30114

**PROPERTY ID/FOLIO #**

14H17024A

**DESCRIPTION**

SIGN B  
PLOT SURVEY  
ENLARGED

**PAGE**

18

